

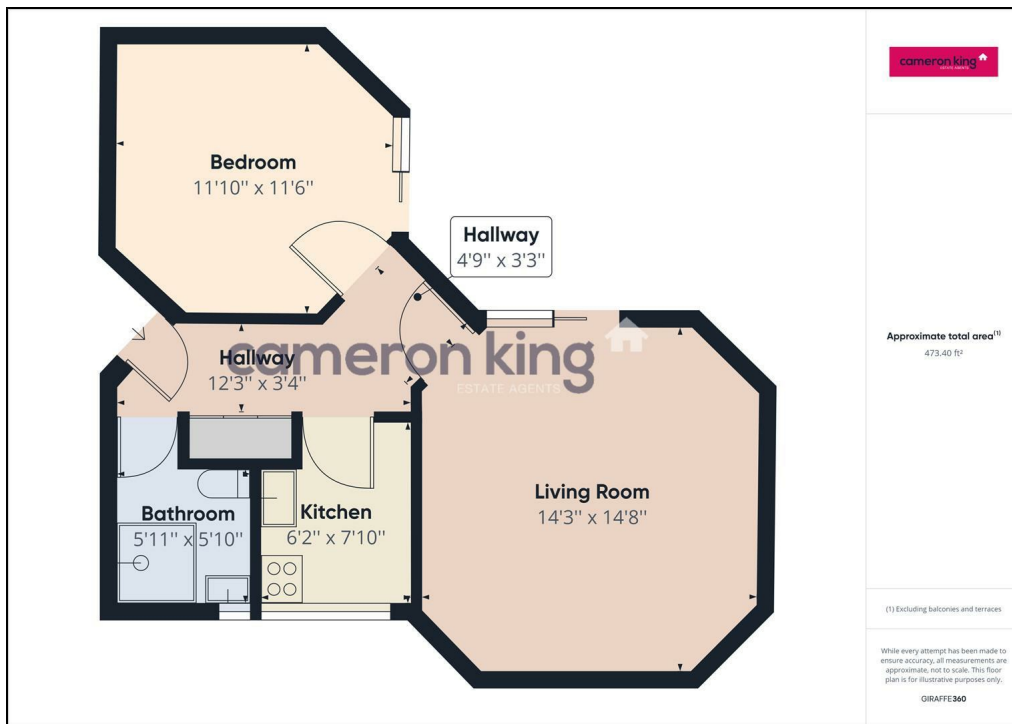


## SUSSEX KEEP SLOUGH, SL1 1NY

Nestled in the heart of Sussex Keep, Slough, this spacious one-bedroom flat offers a perfect blend of comfort and convenience. Designed as a purpose-built residence, this property is fully furnished, making it an ideal choice for those seeking a hassle-free rental experience.

# £1,250 PCM



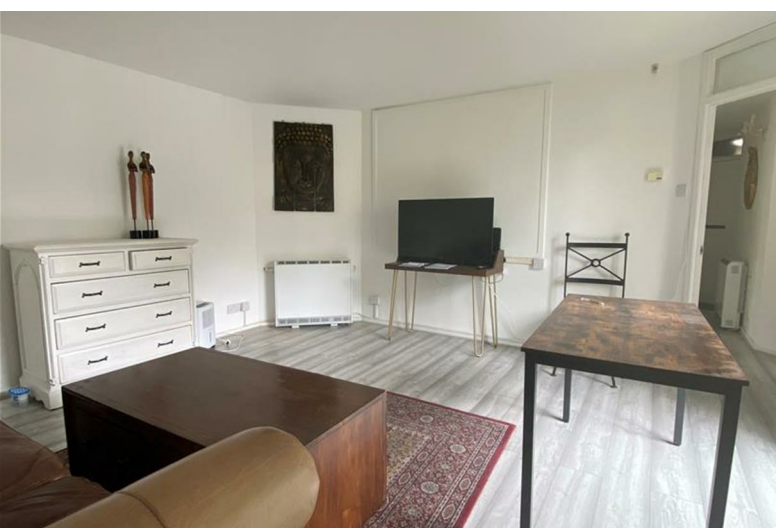


Upon entering, you will find a welcoming reception room that provides ample space for relaxation and entertaining. The bedroom is generously sized, ensuring a peaceful retreat at the end of the day. The flat also features a well-appointed bathroom, designed for both functionality and style.

One of the standout features of this property is its prime location. Situated close to Slough town centre, residents will enjoy easy access to a variety of shops, restaurants, and local amenities. The vibrant atmosphere of the town centre is just a short stroll away, making it an excellent choice for those who appreciate urban living.

This flat is perfect for individuals or couples looking for a comfortable home in a bustling area. With its modern furnishings and convenient location, it presents an excellent opportunity for anyone seeking a rental property in Slough. Don't miss the chance to make this delightful flat your new home.

- Available Mid May 2026
- Easy Access to M4 Motorway (Junction 6)
- Offered Fully Furnished
- Close to Slough Town Centre
- Private Residents Parking
- 1.2 Miles from Slough Railway Station - (Main Paddington Line and Crossrail Station - 20 minutes to Central London)
- Communal Gardens
- Close to Local Amenities



411 Bath Road, Slough, SL1 5QL  
t: 01628 667442  
e: sales@cameronking.co.uk

