



MK

MK
ESTATES

19 Washington Avenue, Bournemouth
£310,000

19 Washington Avenue

Bournemouth

Council Tax band: C

Tenure: Freehold

EPC Energy Efficiency Rating: C

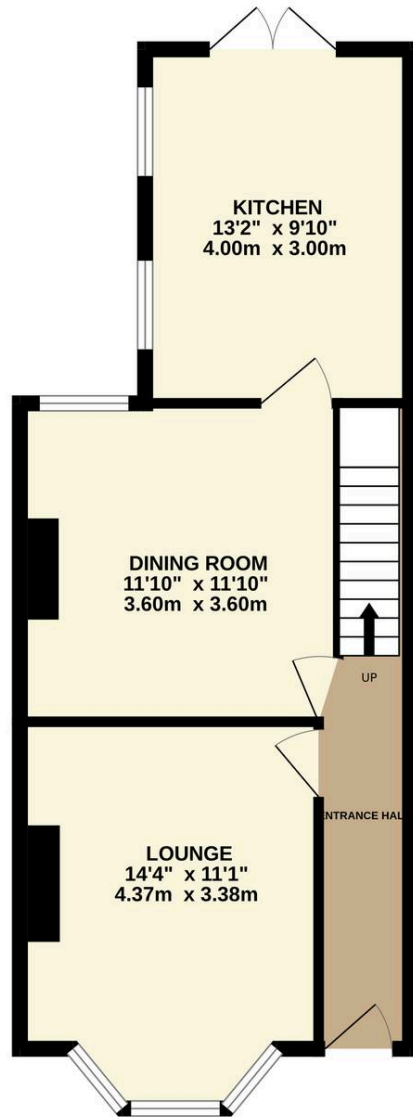
EPC Environmental Impact Rating: C

- Well Presented Terrace Family House
- Three Bedrooms
- Stylish Family Shower Suite
- Two Reception Rooms
- Modern Fitted Kitchen With Door Leading To Outside
- Private Rear Garden With Brick Built Storage Shed
- Catchment For Several Primary/Secondary Schools & Easy Reach To Bournemouth Grammar
- Short Distance To King Park Playing Fields, Leisure Facilities, JP Morgan & Hospital
- Close Proximity To Boscombe & Southbourne High Street & Award Winning Beaches
- Newly Decorated, UPVC Double Glazing & Combi Boiler (fitted 2025)

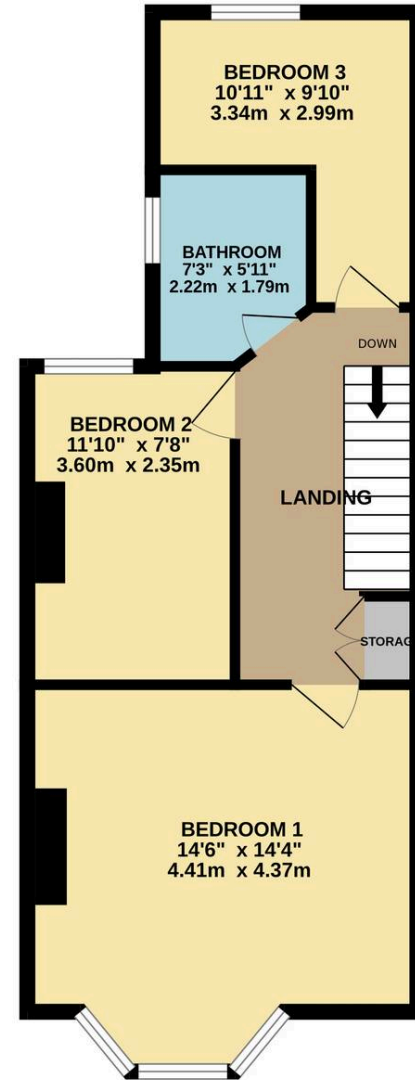




GROUND FLOOR
479 sq.ft. (44.5 sq.m.) approx.



1ST FLOOR
479 sq.ft. (44.5 sq.m.) approx.



TOTAL FLOOR AREA : 958 sq.ft. (89.0 sq.m.) approx.

Whilst every attempt has been made to ensure the accuracy of the floorplan contained here, measurements of doors, windows, rooms and any other items are approximate and no responsibility is taken for any error, omission or mis-statement. This plan is for illustrative purposes only and should be used as such by any prospective purchaser. The services, systems and appliances shown have not been tested and no guarantee as to their operability or efficiency can be given.
Made with Metropix ©2025