



Ladbrooke Grove, W10

£795,000



- Raised Ground Floor
- Bright Open-plan Living
- Private Terrace
- Elegant Period Features
- Two Double Bedrooms
- Prime Ladbrooke Grove





ABOUT THE PROPERTY

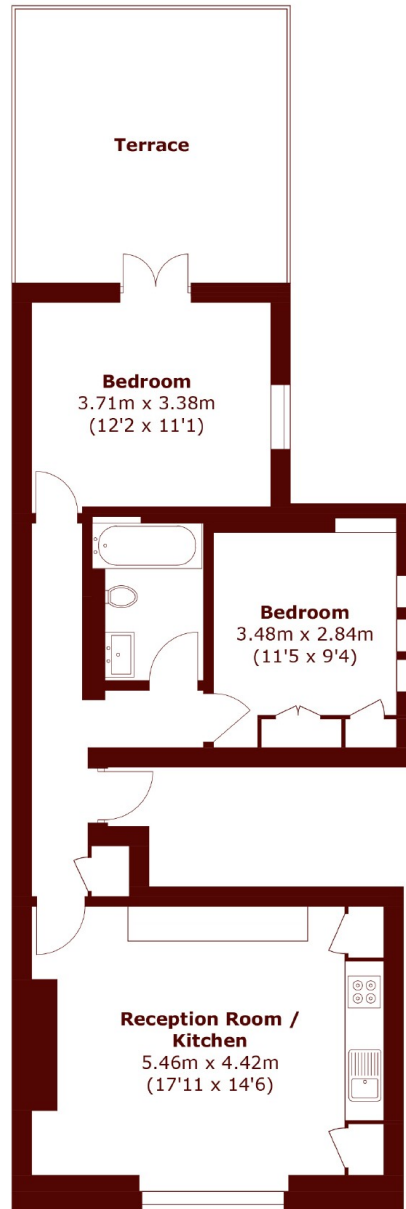
This raised ground floor apartment in a period building on Ladbroke Grove offers bright, spacious interiors, two bedrooms, and a large private terrace just moments from Portobello Road and Westbourne Grove.

At the heart of the home is a stunning open-plan reception room and kitchen. This dual-aspect living space is bathed in natural light via tall sash windows, with elegant cornicing, wood flooring, and ample space for both dining and entertaining.

The kitchen is stylishly fitted with modern cabinetry and integrated appliances. Both bedrooms are well-proportioned doubles. The principal bedroom enjoys direct access to a substantial private terrace, offering a secluded outdoor sanctuary rarely found at this level. The second bedroom features bespoke shelving and a charming bay window. The family bathroom is beautifully finished in vibrant blue tiling, complete with double basins, a bath with shower overhead, and high-quality fittings throughout.

The flat is perfectly located near Portobello Road's shops, cafés and markets, with great transport links via Ladbroke Grove station. Combining period charm, modern design, and a rare private terrace, it's ideal for professionals, couples, or investors.





Total area (approx.): 59.4 sq. m (639.0 sq. ft)
Terrace: 17.8 sq. m (191.5 sq. ft)

Marsh & Parsons North Kensington

136 Lancaster Road, London,
W11 1QU
020 7313 8350