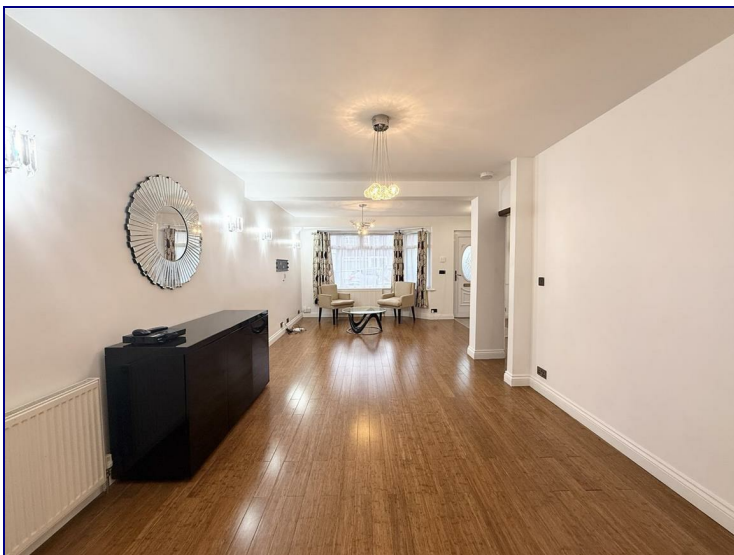


Warren Close, London, N9 8QE



£2,650 PCM

KINGS are pleased to present this spacious 4-bedroom terraced house located in a quiet cul-de-sac in N9. The property offers a through-lounge to an extended kitchen with garden access, ground floor bathroom, two additional shower rooms upstairs, and a loft conversion. Ideally situated close to Edmonton Green Shopping Centre & Station, local schools, shops, and Lea Valley Leisure facilities—an excellent family home. Contact us today.



