

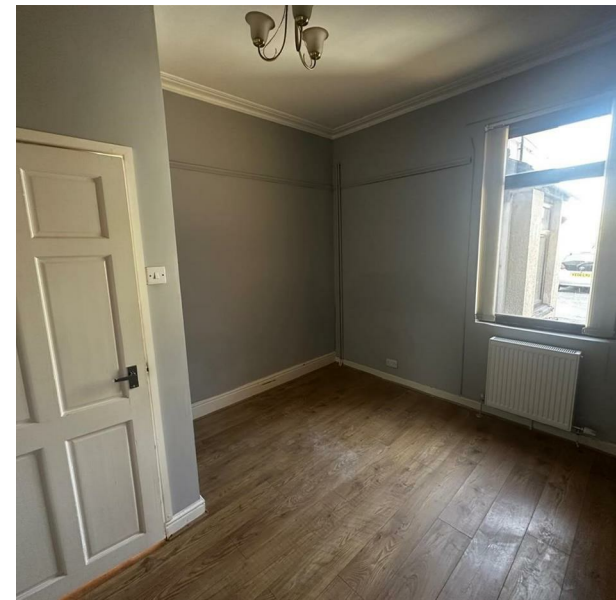
10 Kenworthy Lane, Northenden, Manchester, M22 4EJ

£950 PCM

Council Tax Band: A



ORLANDO REID



Set on Kenworthy Lane in Northenden, this one-bedroom ground-floor apartment offers the ideal blend of privacy, space, and everyday convenience. With its own private entrance through the rear door, it feels more like a home than a typical flat, creating a welcoming sense of independence the moment you arrive.

Inside, the layout is generous and practical, with a large living room that's easy to style for cosy evenings in, entertaining friends, or simply having space to breathe after a busy day. The bedroom is a good size too, offering plenty of room for a proper bed and additional furniture, so you can keep things calm, uncluttered, and organised.



St Johns Court 19b Quay Street, Manchester, M3 3HN

01616760099

manchester@orlandoreid.co.uk

<https://www.orlandoreid.co.uk/manchester/>

