



# Hood Lane, Armitage, WS15

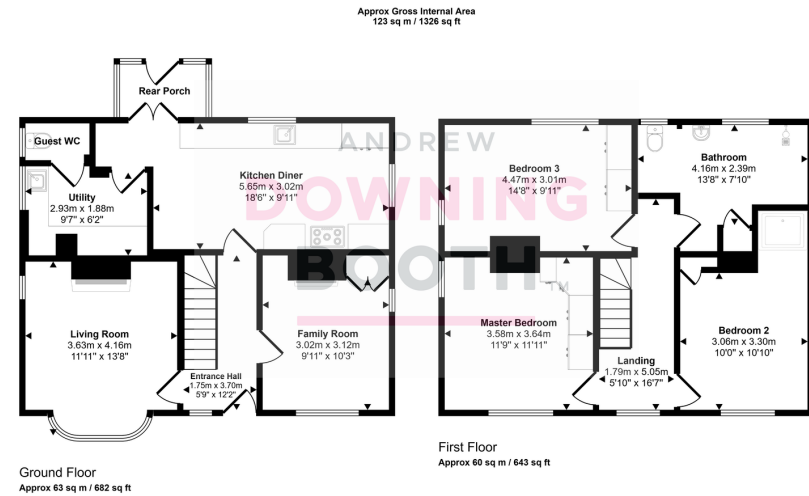
£495,000

3 1 2



- Three Double Bedroom  
1920's Detached Cottage
- Living Room, Family Room  
With Cast Iron Multi Fuel  
Burner
- Large Modern Wet Room
- Packed With Character  
Features & Coming With  
Stunning Rural Views
- Wonderful Contemporary  
Kitchen, Utility Room & Guest  
WC
- Garage Store, External Store,  
Large Plot & Spacious  
Driveway





This floorplan is only for illustrative purposes and is not to scale. Measurements of rooms, doors, windows, and any items are approximate and no responsibility is taken for any error, omission or mis-statement. Icons of items such as bathroom suites are representations only and may not look like the real items. Made with Made Snappy 360.

Remember the tale of Little Red Riding Hood? Well forget those properties on with the other estate agents, because the big bad wolf is on his way to blow those homes down, and we can guarantee, he won't be coming near this stunning cottage on Hood Lane, as it ticks each and every box! Sitting on the edge of the popular village of Armitage with wonderful countryside views, and on a generous plot of approximately 0.19 acres, this 1920's bow fronted detached home really offers a lot for the money. Coming to the market packed with character features and with a contemporary kitchen and bathroom, this property is certainly going to be popular.

