

HUNTERS®

HERE TO GET *you* THERE



Moresby Road, Flat 3

Clapton, London, E5 9LE

£1,795 Per Month



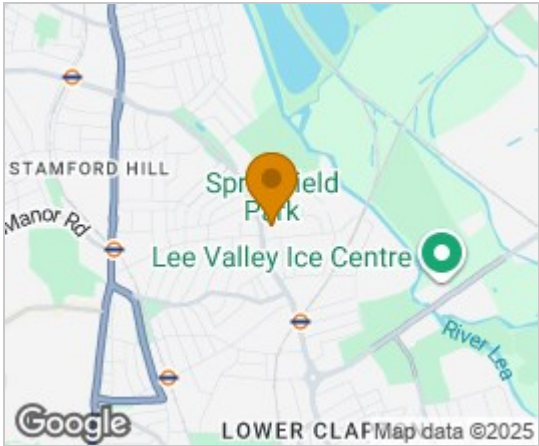
A stunning one bedroom property, split over the first floor period conversion, finished to a high standard with exquisite design throughout.

This home has the typical traits of high ceilings and big sash windows, making it very bright and airy. The generous front to back open plan living space. There is a generously sized double bedroom and modern family bathroom.

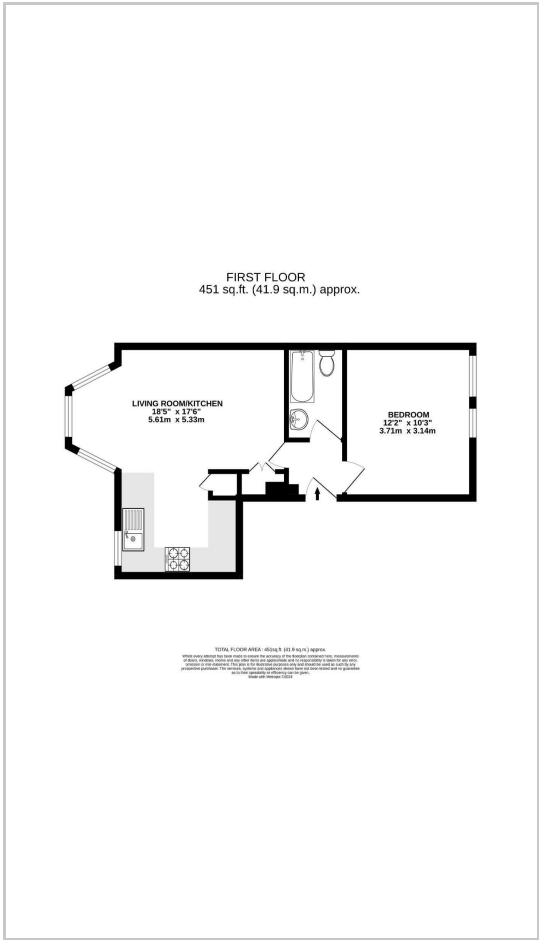
A perfect option for a couple or a single professional that want easy access to the city with a 12 minute train journey from the nearby Clapton station, only a 7 minute walk from the property. Other transport links connect via bus routes to The City, West End and Highbury and Islington, with the luxury of a night bus regularly running from Tottenham Court Road. Further benefiting from wood floors, gas central heating and double glazing.



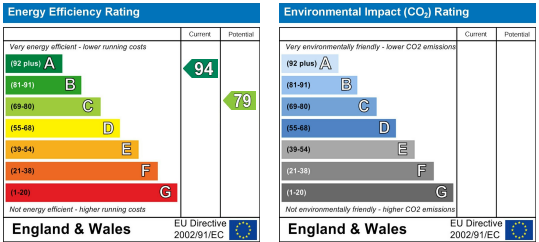
Area Map



Floor Plans



Energy Efficiency Graph



These particulars are intended to give a fair and reliable description of the property but no responsibility for any inaccuracy or error can be accepted and do not constitute an offer or contract. We have not tested any services or appliances (including central heating if fitted) referred to in these particulars and the purchasers are advised to satisfy themselves as to the working order and condition. If a property is unoccupied at any time there may be reconnection charges for any switched off/disconnected or drained services or appliances - All measurements are approximate. **THINKING OF SELLING?** If you are thinking of selling your home or just curious to discover the value of your property, Hunters would be pleased to provide free, no obligation sales and marketing advice. Even if your home is outside the area covered by our local offices we can arrange a Market Appraisal through our national network of Hunters estate agents.