



Apartment 5A Melbourne Court, Braidpark Drive, Giffnock G46 6LA

www.nicolestateagents.co.uk



Nicol Estate Agents



Nicol Estate Agents

Situation

Giffnock is acknowledged for its standard of local amenities and provides a selection of local shops, supermarkets, restaurants, regular bus and rail services to Glasgow City Centre, banks, library and health care facilities.

This popular and leafy suburb is located approximately 8 miles to the South of Glasgow's City Centre and is conveniently situated for commuter access to nearby M77/M8 & Glasgow Southern Orbital.

The property is located in close proximity to Giffnock Village local shops and restaurants and is conveniently located to for access to Morrisons and Sainsburys on Fenwick Road, The Avenue shopping centre and Waitrose at Greenlaw Village Retail Park. The property is within walking distance to Giffnock Train Station. If you are an outdoors lover, Rouken Glen Park, voted Best Park in the UK 2016, is nearby with walking trails through the woods, a great adventure play area, a skate park, five a side football pitches, café and a boating pond.

A wide range of sports and recreational facilities can be found locally to include Eastwood Park Theatre, David Lloyd Rouken Glen, Parklands Country Club, Pure Gym, Nuffield Giffnock Health Clubs, as well as Cathcart, Williamwood and Whitecraigs Golf Clubs, Giffnock Tennis Club, as well as East Renfrewshire Council's own excellent sports and leisure facilities at Eastwood Toll.









Nicol Estate Agents

Property Description

Seldom available, three bedroom ground floor apartment with single garage, located within this continually sought after development by Dickie Homes, set within attractive landscaped resident's gardens, close to the centre of Giffnock.

The apartment would now benefit from some modernisation and offers flexible accommodation comprising:

Well kept communal entrance hall. Reception hallway with good storage. Bright and spacious bay window sitting room with a sit out southerly facing sun balcony. Breakfasting kitchen with a full complement of wall mounted and floor standing units. Dining room/bedroom three. Bedroom one with ensuite shower room and extensive fitted wardrobes. Bedroom two with fitted wardrobes. The bathroom completes the accommodation.

The property is further complemented by electric heating, double glazing and a security entrance system.

Well kept communal gardens. Residents parking and additional lock-up single garage with remote door.



www.nicolestateagents.co.uk

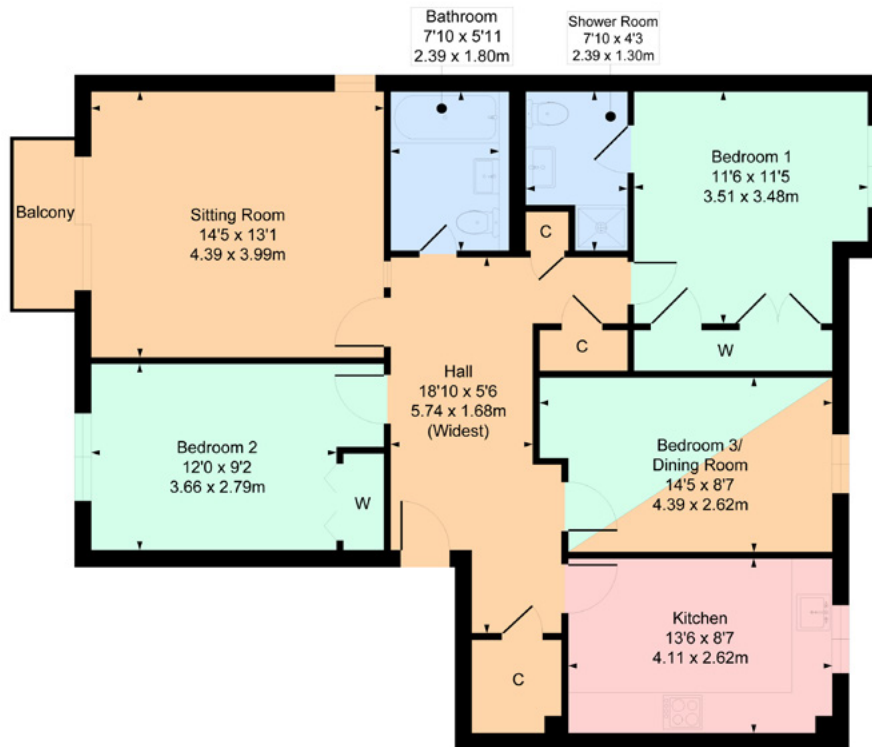




5A Melbourne Court, Giffnock

Approximate Gross Internal Area

997 sq ft - 92.62 sq m



SKETCH PLAN FOR ILLUSTRATIVE PURPOSES ONLY All measurements, walls, doors, windows, fitting and appliances, their sizes and locations are approximate only. They cannot be regarded as being a representation by the seller, nor their agent. We believe these details to be accurate however it is not guaranteed and they do not form any part of a contract. Fixtures and fittings are not included unless specified in the enclosed. Photographs are for general information and it must not be inferred that any item is included for sale with the property.



Nicol Estate Agents

Viewing

By appointment through
Nicol Estate Agents
Clarkston

Outgoings

East Renfrewshire Council
Band E

Fixtures & Fittings

Only items specifically mentioned in the sale particulars are included in the sale price.

Energy Efficiency Rating

Band D

Services

The property will be supplied by mains water, electricity and drainage. Electric central heating.

Local Authority

East Renfrewshire Council
Council headquarters
Eastwood Park
Rouken Glen Road
Giffnock G46 6UG
Tel: (0141) 577 3000

Property Reference

CLA592

46 Ayr Road, Newton Mearns, Glasgow G46 6SA | 0141 616 3960 | fax 0141 258 2761 | mail@nicolestateagents.co.uk

1 Helena Place, Busby Road, Clarkston, G78 7RB | 0141 638 4541 | fax 0141 258 2761 | clarkston@nicolestateagents.co.uk



www.nicolestateagents.co.uk