



VIADUCT GARDENS, SW11

£550,000

This one-bedroom apartment is set in Legacy Building, offering a perfect blend of comfort and contemporary living. Spanning approximately 609 sq ft, the property features a thoughtfully designed layout that maximises both space and natural light.

- Open plan living & dining area
- 609 Sq Ft
- Private Balcony
- Gym
- Swimming Pool
- EPC: B

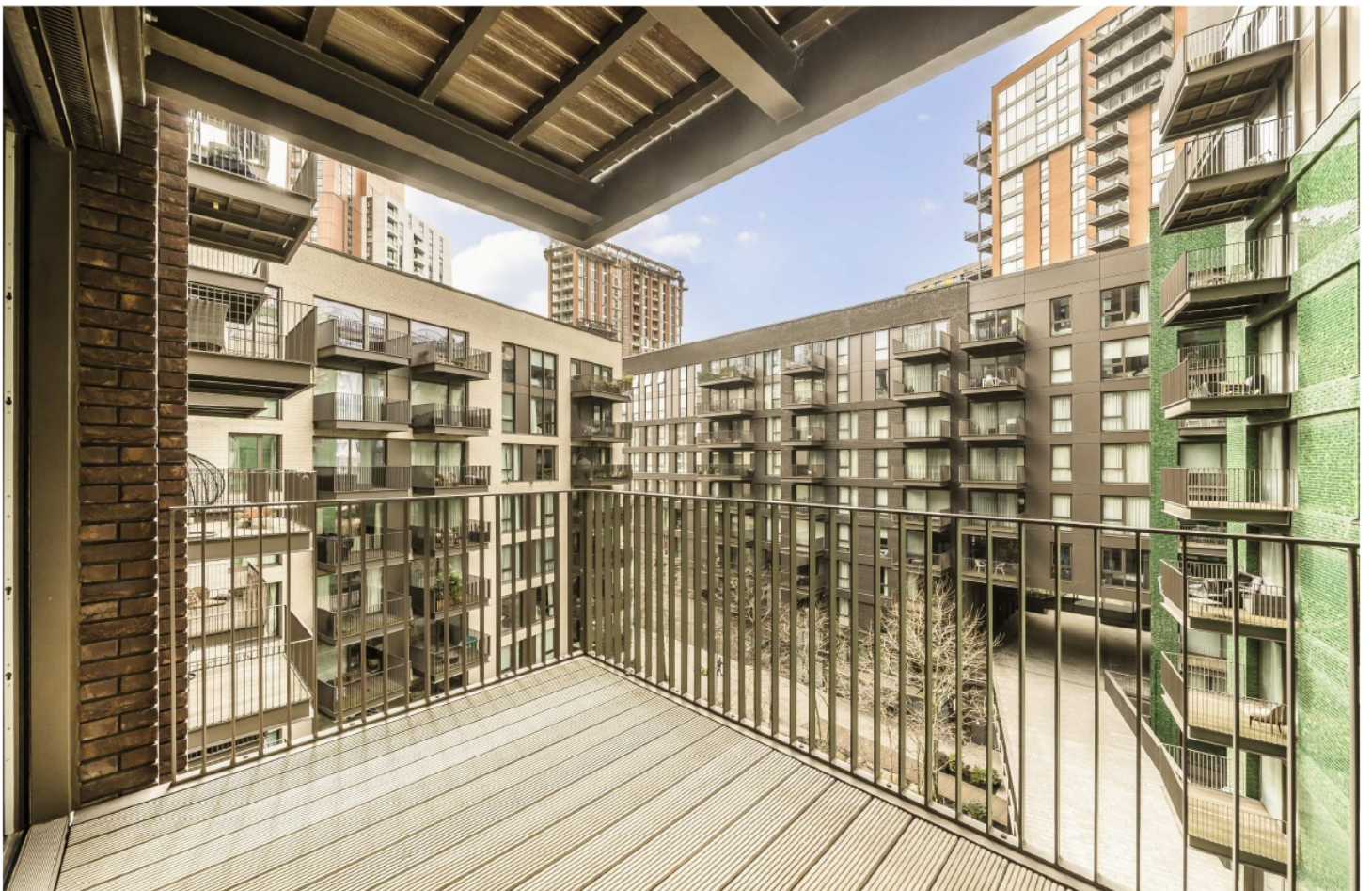


ABOUT THE HOME

Embassy Gardens offers state of the art facilities for residents with the iconic outdoor Sky Pool, an indoor swimming pool, gym, 24 hour concierge, residents cinema and business suites.

Situated close to Nine Elms Station and Vauxhall Station, providing easy access into Central London. The property benefits from being located beside the Embassy Gardens, with a fantastic selection of bars, restaurants and shops as well as being 0.7 miles from Battersea Power Stations.







Total area (approx.): 56.6 sq. m (609.2 sq. ft)

Balcony area (approx.): 7.4 sq. m (79.6 sq. ft)

LiFE RESIDENTIAL

11 Flagstaff House, London,
SW8 2LZ

Sales: 020 7476 1408

Lettings: 020 7582 7989

Energy Rating: B. We aim to make our particulars both accurate and reliable. However they are not guaranteed; nor do they form part of an offer or contract. If you require clarification on any points then please contact us, especially if you're traveling some distance to view. Please note that appliances and heating systems have not been tested and therefore no warranties can be given as to their good working order.