



135 Millfield New Ash Green

- Well Presented Three Bedroom House
- Fabulous Spacious Fully Fitted Kitchen/Diner
- Living Room to Rear
- Study/Utility Room
- Gas Central Heating
- Double Glazing Throughout
- South Facing Rear Garden
- Garage/Gym Room

£355,000





Occupying a secluded position and conveniently located for local amenities a beautifully presented three bedroom mid terrace house. Boasting an amazing spacious fully fitted kitchen/diner with integrated appliances, gas central heating, double glazing throughout, a study/utility room. The rear garden is south facing and the garage is nearby on block and is currently adapted into a gym/beauty room.

When you enter the house you are meet with a fabulous open fitted kitchen/diner, to the rear lies the living room which overlooks the south facing rear garden, there is also a versatile study/utility room.

Upstairs there are three bedrooms and a family bathroom.

The outside has a sunny rear garden with patio area, fenced boundaries and rear gate. There is a garage nearby in block which is currently used as a gym/beauty room.

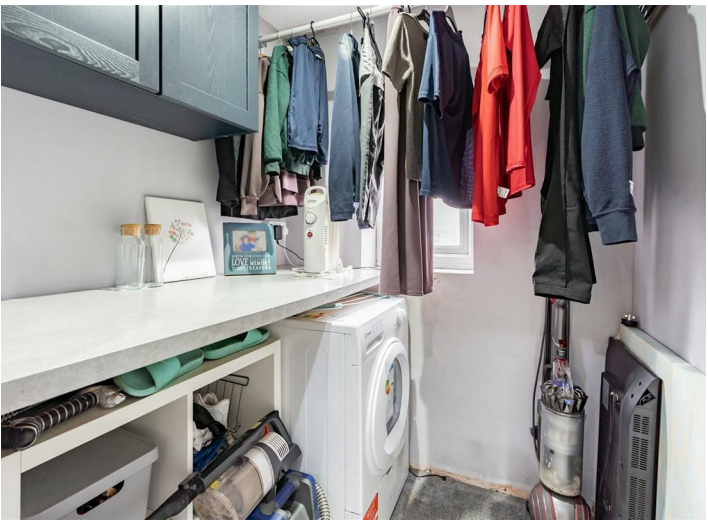
Tenure: Freehold

Council Tax Band: C

Residents Society Fees and Village Association Fees apply to properties in New Ash Green, please ask for further information or contact New Ash Green Village Association directly for figures.

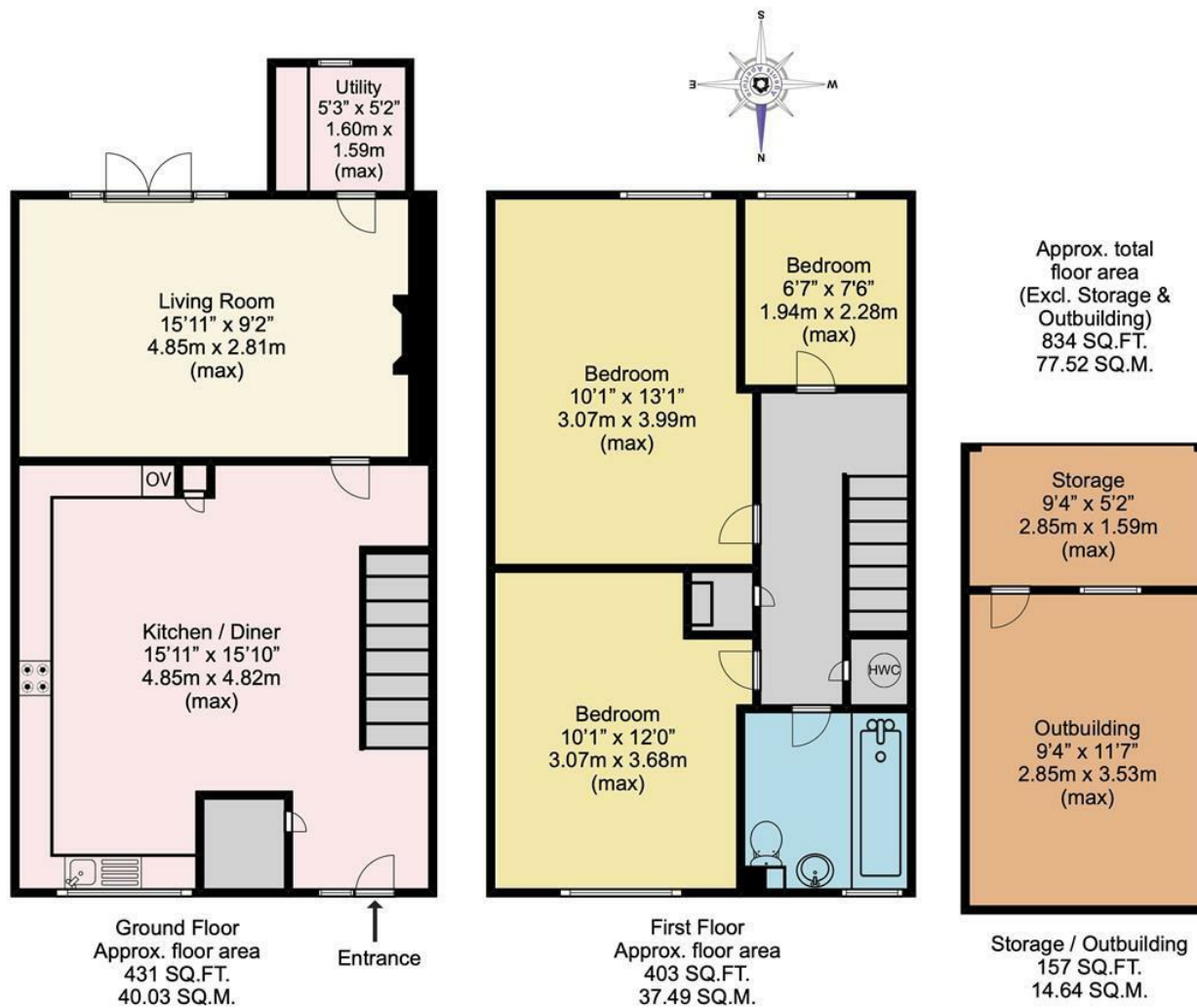
Fixtures and fittings by arrangement other than those mentioned.



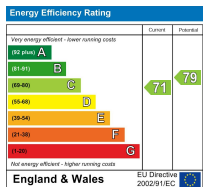








Disclaimer
 This plan is for illustrative purposes only and no responsibility is taken for any error, omission or misstatement. The appliances shown have not been tested and no guarantee as to their operability or efficiency can be given. Measurements have been added as a guide to prospective buyers only, are not precise, not to scale, may have been taken from the widest area and may include wardrobe / cupboard space. Garages and outbuildings may not be represented in their actual location in relation to the property. Compass point, measurements and total areas should be considered inaccurate and checked as no guarantee is given to their accuracy. Buyers are strongly advised to take their own measurements and compass bearing.



Appliances and services are untested. Dimensions are approximate and floorplans are not to scale. Fixtures and fittings, planning and alterations, lease details if applicable, should all be verified legally.

Open: Monday-Friday 9am-5.30pm
 Saturday 9am-5pm

**4 The Row, New Ash Green
 Kent DA3 8JG**

**1 The Parade, Wrotham Road
 Meopham, Kent DA13 0JL**

01474 815811 / 871555

info@hartleyestates.com
 www.hartleyestates.com

