

Granada Road, Southsea, PO4 0RJ

Asking Price £175,000

This beautiful, spacious leasehold property sits in the amazing location of Granada Road Southsea, just moments away from Canoe Lake.

Located on the top floor of the building, this property boasts views of Canoe Lake and the seafront from the lounge.

The property is not only close to the lake and the beach but it is also within walking distance of shops, bars, cafes and a regular bus transportation service.

The rooms are light and airy and the warm welcome you get from this property will have you falling in love with it. It is sure to be a hit with all buyers.

The property will benefit from a new 950 year lease.

Possible future share of freehold.

The service charge is an approximation guided by current and future estimated costs.

Disclaimer

Granada Road, Southsea, PO4 0RJ

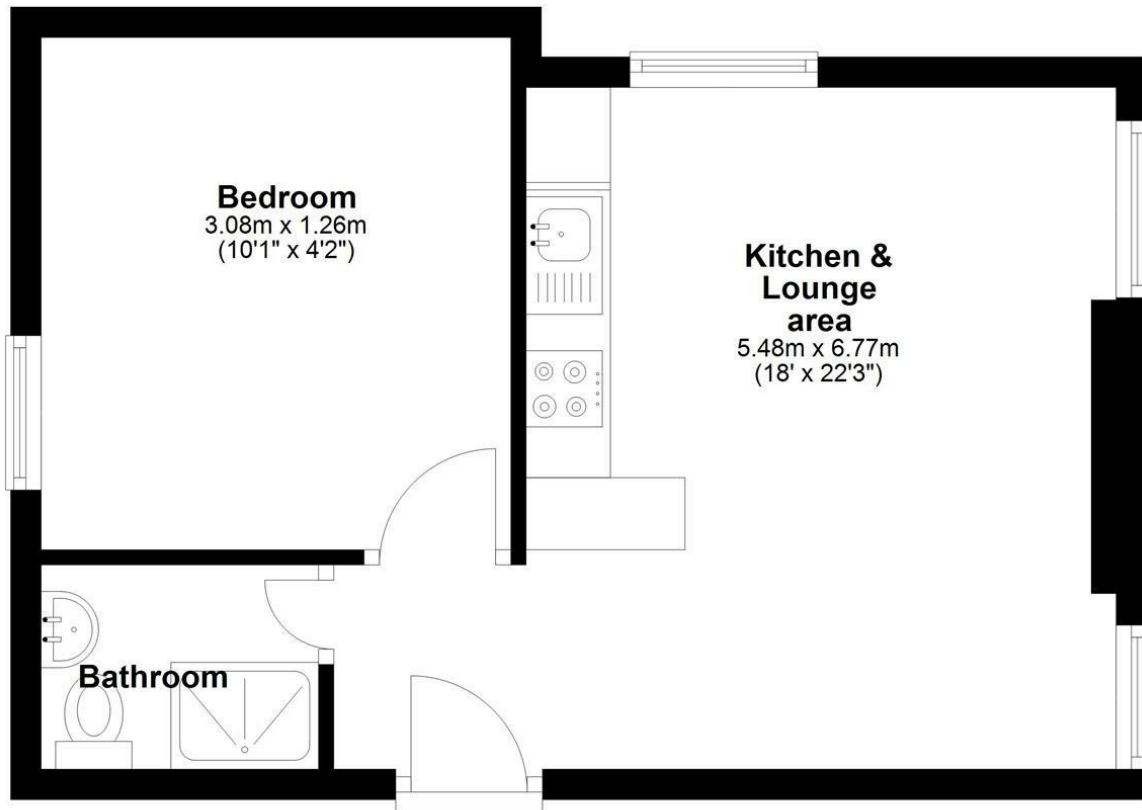
Lounge / Kitchen / Hall area 19'7" x 15'3" (5.99 x 4.67)

Bathroom 5'10" x 7'0" (1.80 x 2.14)

Bedroom 11'1" x 10'1" (3.39 x 3.08)

Floor Plan

Approx. 39.6 sq. metres (426.1 sq. feet)



Total area: approx. 39.6 sq. metres (426.1 sq. feet)

