



Macfarlane Road, W12

£425,000

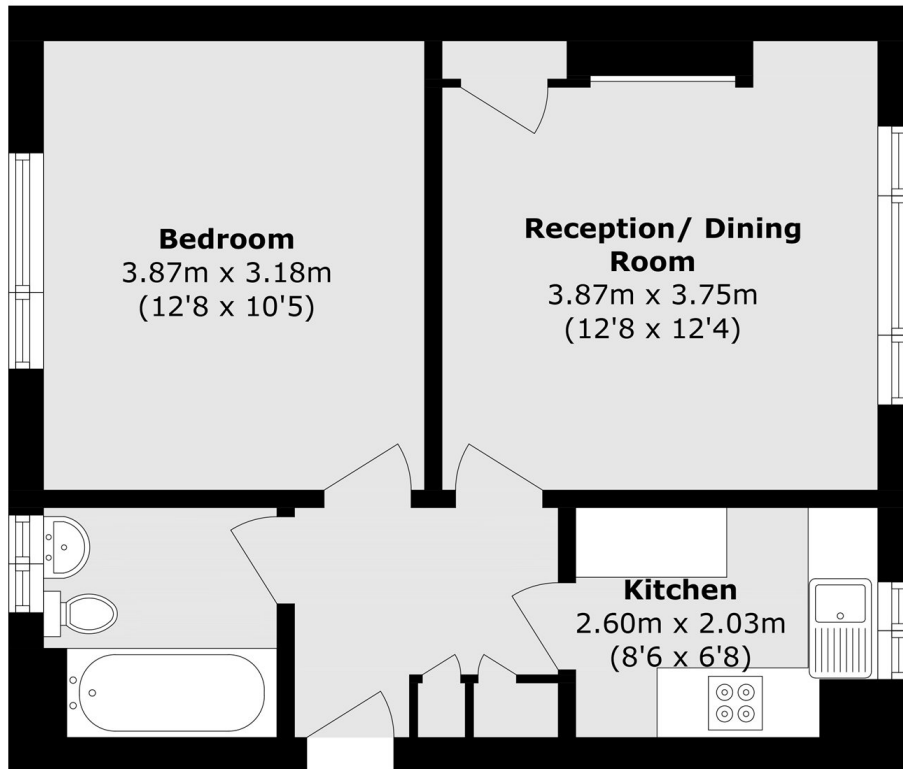
A spacious one bedroom apartment on popular tree lined street in the heart of Shepherds Bush. This property offers a separate kitchen/living room, double bedroom and access to a shared garden.

This amazing property is located on Macfarlane Road, a very quiet road a minute away from Westfield shopping centre and the Shepherd's Bush Market tube station. It is also 4 min away from Wood Lane tube station on the Central line.

Features

- Shared Garden
- One Bedroom
- Residents Parking
- Secure Entry System
- Westfields Shopping Centre
- Soho House White City

Macfarlane Road, London, W12



Total area (approx.): 43.1 sq. m (463.9 sq. ft)