



**8 Upper Blackfriars Crescent, St Mary's Water Lane, Shrewsbury, SY1 2BA**  
£850 Per Month



8 Upper Blackfriars Crescent, St Mary's Water Lane, Shrewsbury, SY1 2BA

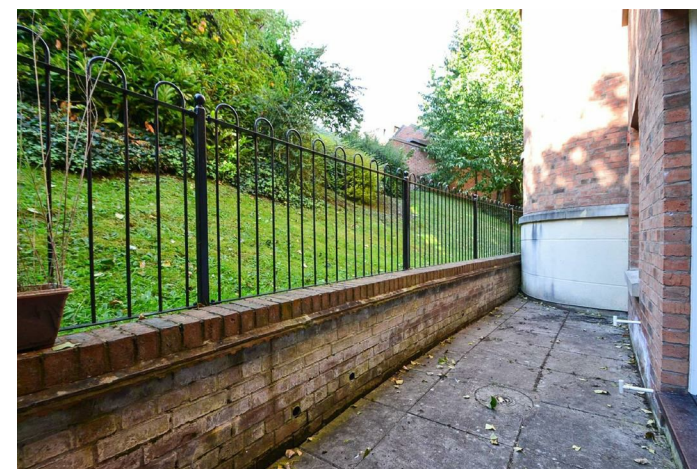
**£850 Per Month**

VIRTUAL TOUR AVAILABLE - Modern one bedroom first floor apartment set in this exclusive development within Shrewsbury town centre. The property benefits from an allocated parking space and private terrace as well as access to a large communal meadow by the River Severn. Allocated parking space & bike store.

Available: 31/07/2026

## Description

Communal entrance with security intercom, private entrance hallway, lounge/dining room, kitchen including oven, hob, washing machine and fridge, good sized bedroom including built in wardrobes and private courtyard, bathroom with shower. Allocated parking space and bike store. Electric heating, full double glazing. EPC C



Unfurnished

Council Tax Band: C

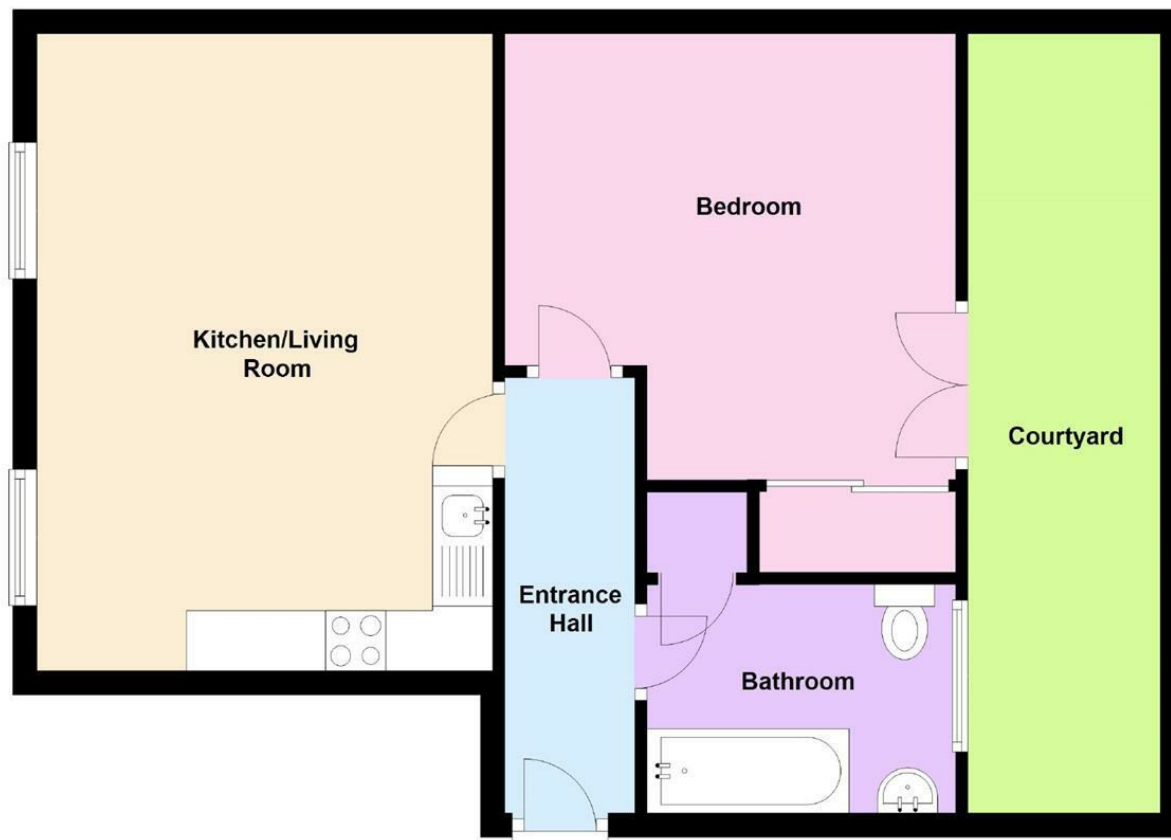
Available: 31st July 2026

EPC: C

## Floor Plans

### First Floor

Approx. 55.9 sq. metres (601.3 sq. feet)



Total area: approx. 55.9 sq. metres (601.3 sq. feet)

We accept no responsibility for any mistake or inaccuracy contained within the floorplan. The floorplan is provided as a guide only and should be taken as an illustration only. The measurements, contents and positioning are approximations only and provided as a guidance tool and not an exact replication of the property.

Plan produced using PlanUp.

These particulars, whilst believed to be accurate are set out as a general outline only for guidance and do not constitute any part of an offer or contract. Intending purchasers should not rely on them as statements of representation of fact, but must satisfy themselves by inspection or otherwise as to their accuracy. No person in this firm's employment has the authority to make or give any representation or warranty in respect of the property.