



OAKFIELD



St. Leonards Road, Eastbourne, BN21 3UU

£1,300 Per Calendar Month



St. Leonards Road, Eastbourne, BN21 3UU

ZERO DEPOSIT OPTION AVAILABLE

Ansvar House is exclusive new collection of 20 stylish apartments, designed for contemporary living in the centre of Eastbourne. If you are looking for the perfect place to call home, these apartments offer a unique blend of modern design, convenience, and comfort.

This property offers 2 generously sized bedrooms, open plan living with a modern kitchen with washing machine, fridge/freezer and integrated dishwasher. The bathroom has a modern suite complete with a shower over the bath.

Other benefits include modern electric heating, an entry intercom system, a lift to all floors and allocated parking for 1 vehicle. This is a pet friendly development we welcome applicants who have pets.

The apartments are located just a 5 minute walk from the centre of Eastbourne allowing you to enjoy easy access to shops, restaurants, parks, and excellent transport links, making commuting and leisure effortless.

Available to move in early June
Annual Income Threshold: £39,000





Living Room/Kitchen

20'8" x 15'11" (6.30m x 4.85m)

Bedroom One

11'6" x 9'3" (3.51m x 2.82m)

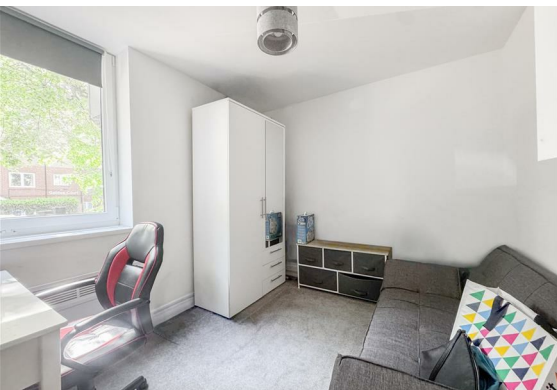
Bedroom Two

10'0" x 7'10" (3.05m x 2.39m)

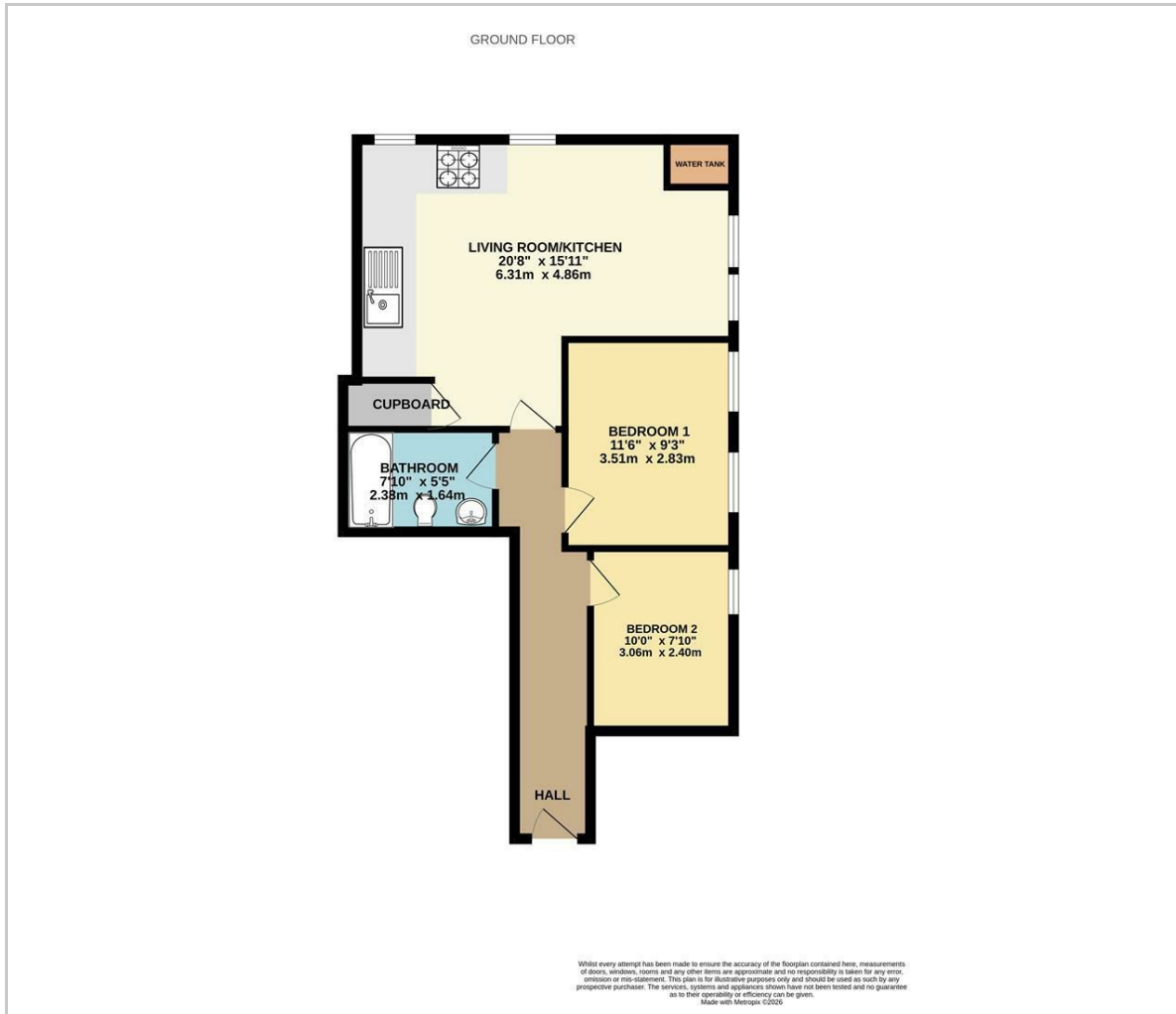
Bathroom

7'10" x 5'5" (2.39m x 1.65m)

Council Tax Band C - £2,359.37 Per Annum



Floor Plan

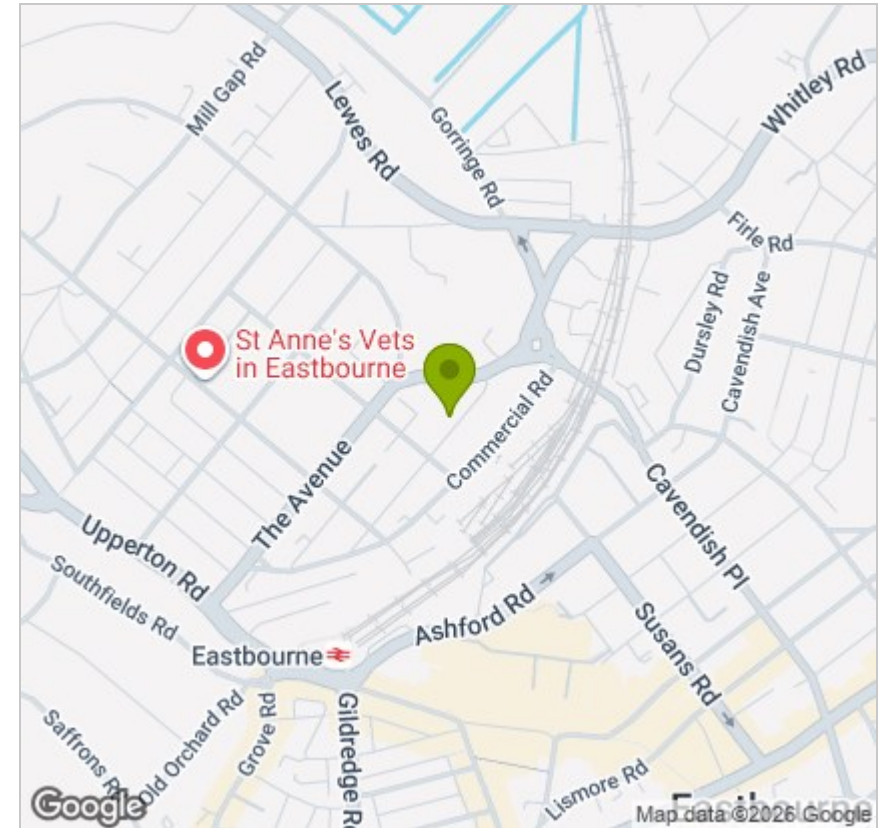


Viewing

Please contact us on 01323 405553
if you wish to arrange a viewing appointment for this property or require further information.

These particulars, whilst believed to be accurate are set out as a general outline only for guidance and do not constitute any part of an offer or contract. Intending purchasers should not rely on them as statements of representation of fact, but must satisfy themselves by inspection or otherwise as to their accuracy. No person in this firm's employment has the authority to make or give any representation or warranty in respect of the property.

Area Map



Energy Efficiency Graph

