



7 East View Close Houlton, Rugby, CV23 1DQ

Houlton, Rugby - Stylish Three Bedroom, Semi-Detached Home, with LANDSCAPED GARDEN & TIMBER GARDEN ROOM/HOME OFFICE.

Located within the highly regarded and sought-after Houlton development in Rugby, this beautifully presented three-bedroom semi-detached home offers contemporary living in an upmarket residential setting, perfectly positioned for local amenities, transport links and well-regarded schooling.

This modern property enjoys driveway parking for two vehicles to the front and opens into a welcoming entrance hall, creating an immediate sense of space and quality. A convenient guest WC serves the ground floor.

The heart of the home is the stylish fitted kitchen diner, offering modern cabinetry, integrated appliances and ample space for dining and entertaining. To the rear, a full-width lounge

Guide price £340,000

7 East View Close

Houlton, Rugby, CV23 1DQ



- Modern three-bedroom semi-detached home in the highly sought-after Holton development
- Contemporary fitted kitchen diner ideal for family living and entertaining
- Fully powered timber garden room – perfect for home office
- Excellent location close to local shops, amenities, transport links and Rugby railway station
- Driveway providing off-road parking for two vehicles
- Full-width lounge with double doors opening onto the rear garden
- Principal bedroom with modern en-suite shower room
- Welcoming entrance hall with guest WC
- Beautifully landscaped rear garden with artificial lawn and composite decking
- Stylish family bathroom serving two further well-proportioned bedrooms

Entrance Hallway

16'6" x 2'11" (5.04 x 0.89)

Kitchen/Diner

15'1" x 7'8" (4.60 x 2.35)

Lounge

14'9" x 10'10" (4.50 x 3.31)

Guest WC

5'5" x 2'8" (1.66 x 0.82)

Utility Cupboard

Bedroom One

10'6" x 7'11" (3.21 x 2.42)

En-Suite

7'11" x 5'4" (2.42 x 1.63)

Bedroom Two

9'4" x 7'11" (2.87 x 2.42)

Bedroom Three

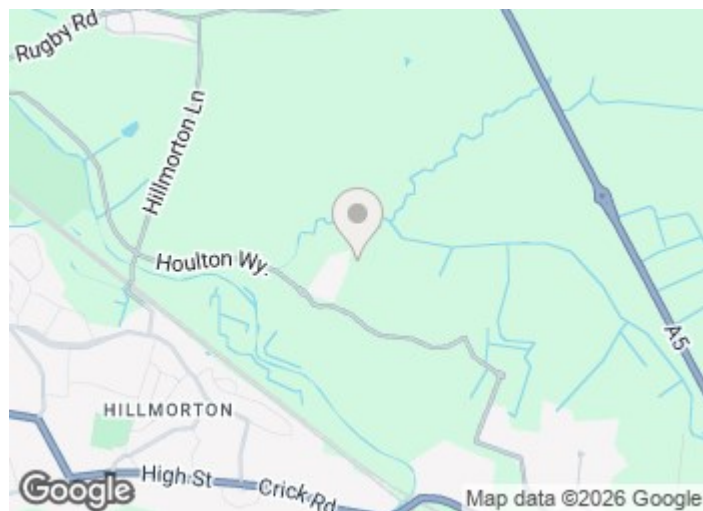
8'3" x 6'2" (2.53 x 1.89)

Bathroom

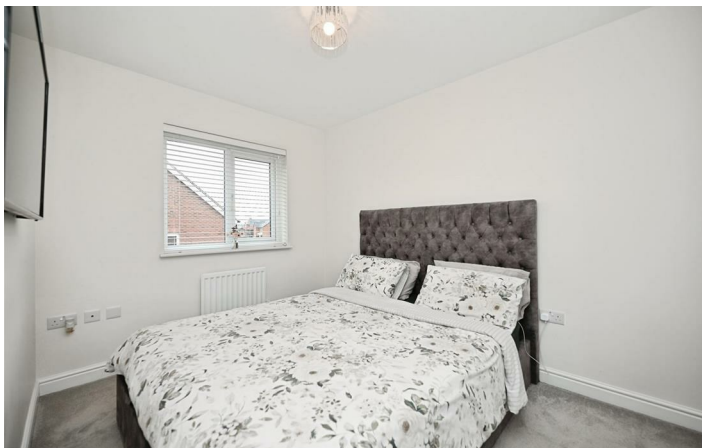
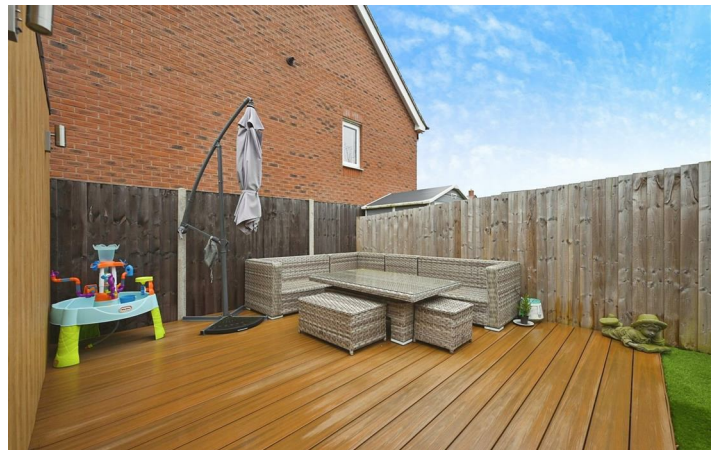
6'5" x 5'5" (1.96 x 1.66)

Garden Room

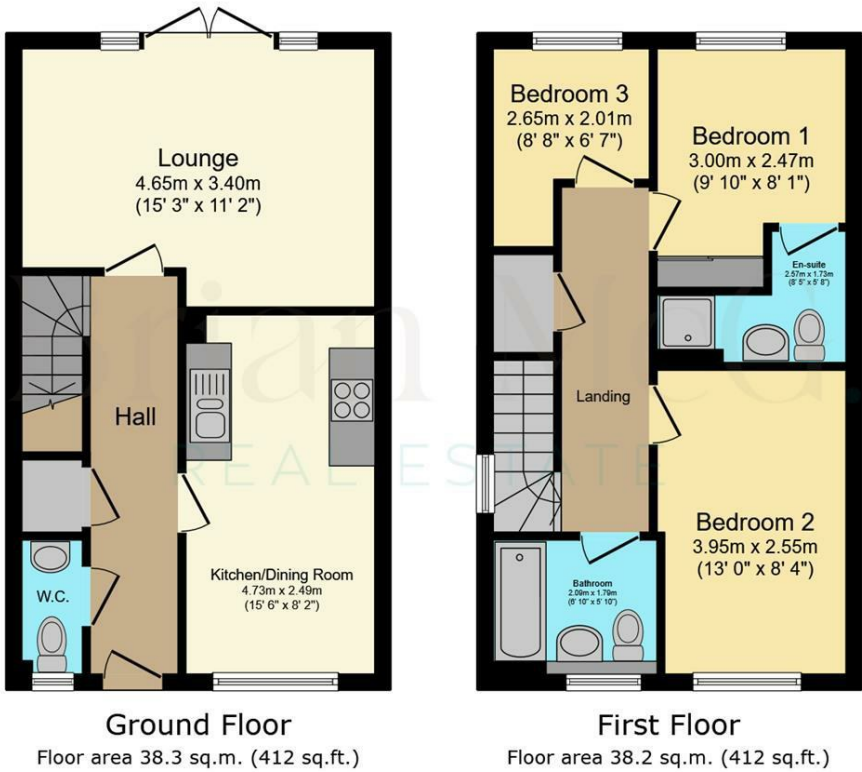
9'10" x 6'2" (3.00 x 1.90)



[Directions](#)



Floor Plan



Total floor area: 76.5 sq.m. (824 sq.ft.)

This floor plan is for illustrative purposes only. It is not drawn to scale. Any measurements, floor areas (including any total floor area), openings and orientations are approximate. No details are guaranteed, they cannot be relied upon for any purpose and do not form any part of any agreement. No liability is taken for any error, omission or misstatement. A party must rely upon its own inspection(s). Powered by www.Propertybox.io

These particulars, whilst believed to be accurate are set out as a general outline only for guidance and do not constitute any part of an offer or contract. Intending purchasers should not rely on them as statements of representation of fact, but must satisfy themselves by inspection or otherwise as to their accuracy. No person in this firms employment has the authority to make or give any representation or warranty in respect of the property.

