



| Hayes Place | | London | NW1 6UA

£3,900 Per month

ESON2[®]
REAL ESTATE

Key features

- 2 bedrooms, 2 bathrooms
- Portered building
- Spacious open-plan reception and dining room
- Private balcony
- Separate fully fitted kitchen with integrated appliances
- Master bedroom with en-suite bathroom
- Lift access
- Secure building with on-site porter
- Moments from Marylebone Station (Chiltern Railways & Bakerloo line)
- Available fully-furnished

Description

A well-presented two bedroom, two bathroom apartment set within a sought-after portered development, ideally situated opposite the Landmark Hotel and moments from Marylebone Station. The apartment offers bright and spacious lateral living accommodation with a reception room of excellent proportions opening onto a private balcony, a well-fitted separate kitchen, and hardwood flooring and ornate cornicing throughout.

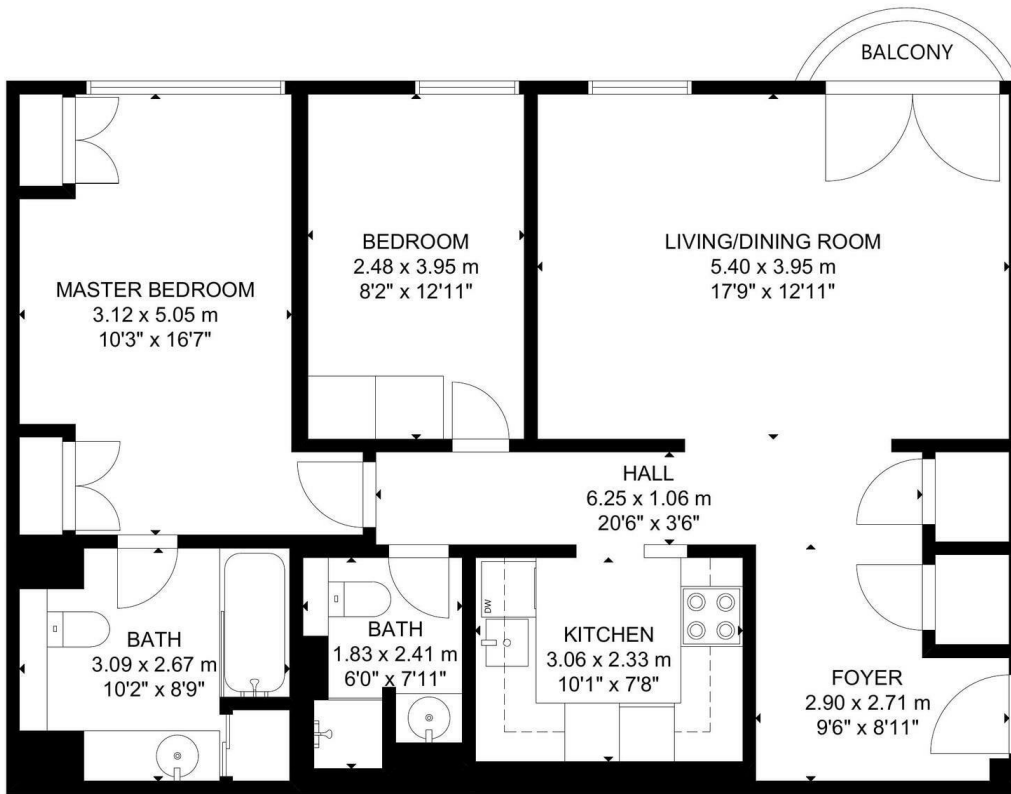
Directions



This elegant apartment comfortably accommodates up to four guests across two bedrooms with large double beds and two modern bathrooms. Ideal for families, professionals, or business travellers, it offers a peaceful retreat in a central London location.

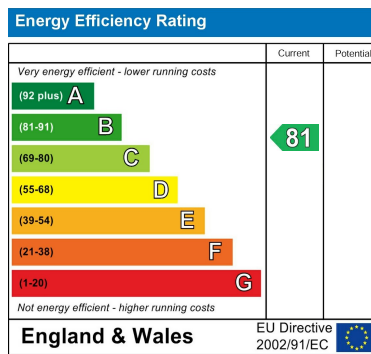


Floor plans



THIRD FLOOR

GROSS INTERNAL AREA
 TOTAL: 88 m²/948 sq ft
 THIRD FLOOR: 88 m²/948 sq ft
 SIZE AND DIMENSIONS ARE APPROXIMATE, ACTUAL MAY VARY.



Council Tax Band G EPC Rating B



301 Michelin House 81 Fulham road
 London
 Greater London
 SW3 6RD
 07920 257649
 fayeel@eson2.co.uk
 www.eson2.co.uk