



ALDERNEY STREET
PIMLICO

JACKSON-STOPS 

ALDERNEY STREET PIMLICO, SW1V

ASKING PRICE: £650,000

A superb two-bedroom garden flat is presented to the market in the heart of Pimlico, SW1 with no onward chain.

The accommodation comprises a well-proportioned reception room, two double bedrooms with built-in storage, a separate bathroom and shower, and a separate kitchen. The property further benefits from a delightful private rear garden ideal for relaxing or entertaining.

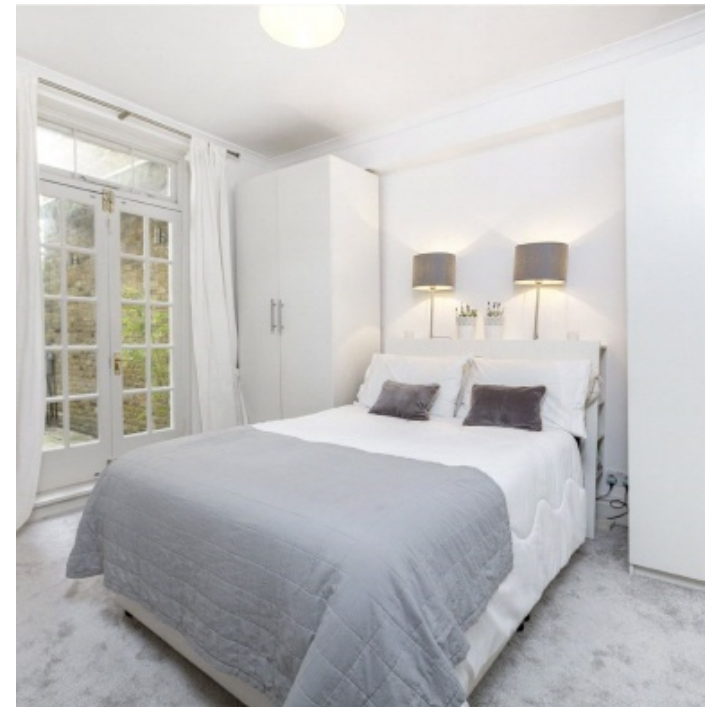
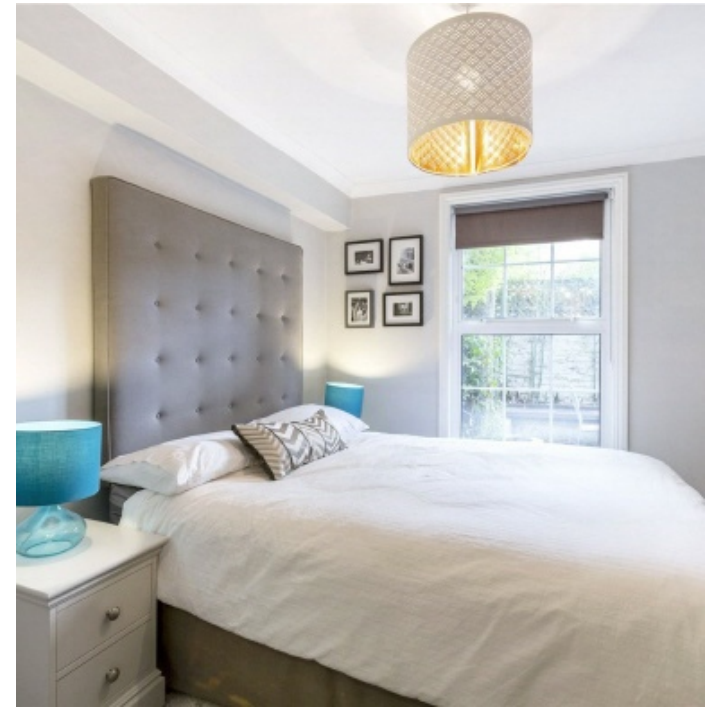
This would suit all those looking for a first time buy in prime central London, a downsize or indeed a long term investment.

Alderney Street is ideally situated within the centre of the Pimlico Grid, conveniently close to the bars, shops, and restaurants the immediate area has offer as well as local, national and international travel from Victoria mainline station.

KEY FEATURES

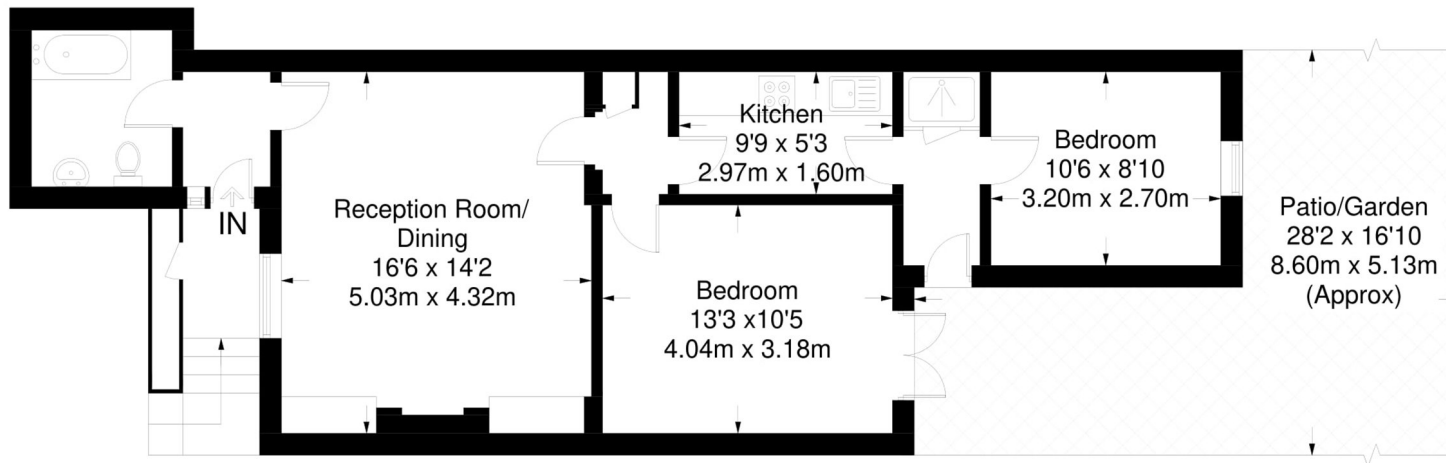
- Leasehold: 150 Yrs Left
- Two Bedrooms
- Garden
- No Onward Chain
- SC: 25% Of Costs Only
- Sole Agent





Alderney Street

Approximate Gross Internal Area = 670 sq ft / 62.2 sq m



Basement

Not to scale, for guidance only and must not be relied upon as a statement of fact.
All measurements and areas are approximate only and have been prepared in accordance with the current edition of the RICS Code of Measuring Practice.

Energy Rating: C. We aim to make our particulars both accurate and reliable. However they are not guaranteed; nor do they form part of an offer or contract. If you require clarification on any points then please contact us, especially if you are travelling some distance to view. Please note that appliances and heating systems have not been tested and therefore no warranties can be given as to their good working order.

ASKING PRICE: £650,000

PIMLICO

020 7828 4050

pimlicosales@jackson-stops.com

jackson-stops.co.uk

JACKSON-STOPS 