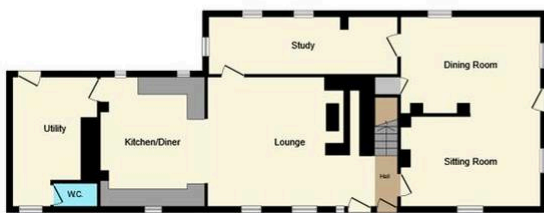


Glan Yr Afon, Llanfwrog, Ruthin, LL15 2AD – £500,000

Tenure: Freehold | EPC: TBC | Council Tax: F

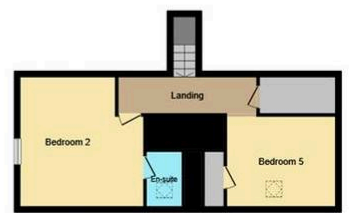
A commanding and beautifully presented Grade II Listed Georgian residence, dating from the late 18th century, offering five bedrooms and four bathrooms arranged over three spacious floors. Nestled in a picturesque hamlet centred around a historic church, the property lies just 0.75 miles from the heart of Ruthin. While predominantly Georgian in character, some elements may date from an earlier period, blending historic charm with modern comforts throughout. Viewing is highly recommended.



Ground Floor



First Floor



Second Floor

This floor plan is for illustrative purposes only. It is not drawn to scale. Any measurements, floor areas (including any total floor area), openings and orientations are approximate. No details are guaranteed, they cannot be relied upon for any purpose and do not form any part of any agreement. No liability is taken for any error, omission or misstatement. A party must rely upon its own inspection(s). Powered by www.Propertybox.io

williams
estates



YOUR FREE
PROPERTY REPORT



WE OFFER FREE ADVICE

MORTGAGES - SURVEYS - SOLICITORS

