

Llys Cowlyd, Rhyl, LL18 4DX

Offers In Region Of £169,000

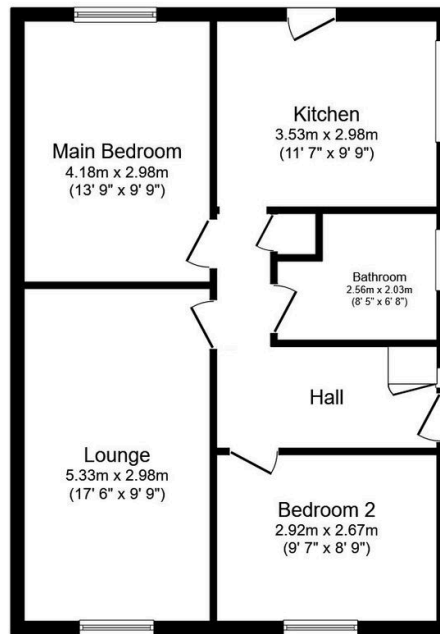
🛏️ 2 🚿 1 🚺 1



This well proportioned detached bungalow boasts a unique charm, situated on the popular and well known Welmar development with decorative gardens and single garage. Having two bedrooms both with fitted wardrobes, kitchen with diner and shower room. It offers clean and tidy accommodation with uPVC double glazing and gas central heating which makes it suitable to a variety of buyers. No chain.

Key Features

- Detached bungalow
- Kitchen / diner
- Single garage with drive
- Freehold
- EPC - D
- Two bedrooms
- Sought after location
- Enclosed gardens
- Council tax - C
- Date instructed 09/05/2025 P/R 05/08/2025, P/R 23/01/26



Floor Plan

Floor area 63.5 sq.m. (684 sq.ft.)

Total floor area: 63.5 sq.m. (684 sq.ft.)

This floor plan is for illustrative purposes only. It is not drawn to scale. Any measurements, floor areas (including any total floor area), openings and orientations are approximate. No details are guaranteed, they cannot be relied upon for any purpose and do not form any part of any agreement. No liability is taken for any error, omission or misstatement. A party must rely upon its own inspection(s). Powered by www.Propertybox.io