






# Sedgemere Grove, Sheffield, WS4 1XE - Beautifully Presented Family Home

£385,000

4  2  2 



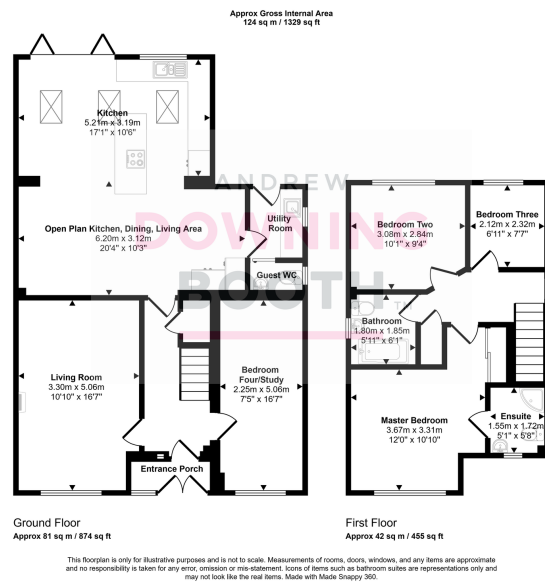
Set within the sought-after Sedgemere Grove, this spacious three/ four-bedroom family home offers versatile accommodation, including the benefit of a convenient downstairs bedroom.

This property is close to a range of local amenities including shops, cafes, and supermarkets. The area is served by well-regarded schools such as Sheffield School and Greenfields Primary School, while Pelsall and Aldridge are just a short drive away. Residents can also enjoy nearby green spaces, perfect for walking, recreation, and family activities, making this location ideal for modern family living. Residents benefit from convenient transport links via the nearby M6 and Walsall town centre, which offers further shopping, dining, and leisure facilities.

The accommodation is arranged over two floors and comprises a welcoming entrance hall, a spacious living room, and an open-plan breakfast kitchen with dining and living areas. There is also a utility room, guest WC, and a versatile fourth bedroom or could be used as a study or playroom. To the first floor, the master bedroom benefits from an en-suite shower room, complemented by two further generous bedrooms and a contemporary family bathroom.

Early viewing is highly recommended to fully appreciate the versatile accommodation and excellent location this family home has to offer.





- Detached Four Bedroom Home
- Contemporary Open Plan Breakfast Kitchen, Dining & Living Area
- Attractive & Spacious Plot With Private Rear Garden
- Master Bedroom With Ensuite Shower Room
- EPC Rating: TBC
- Spacious Downstairs Bedroom
- Close To Local Schools & Amenities
- Large Driving Providing Ample Off-Street Parking
- Beautifully Presented Throughout
- Council Tax Band: D

