



## Murray Street, NW1

£2,900 Per calendar month

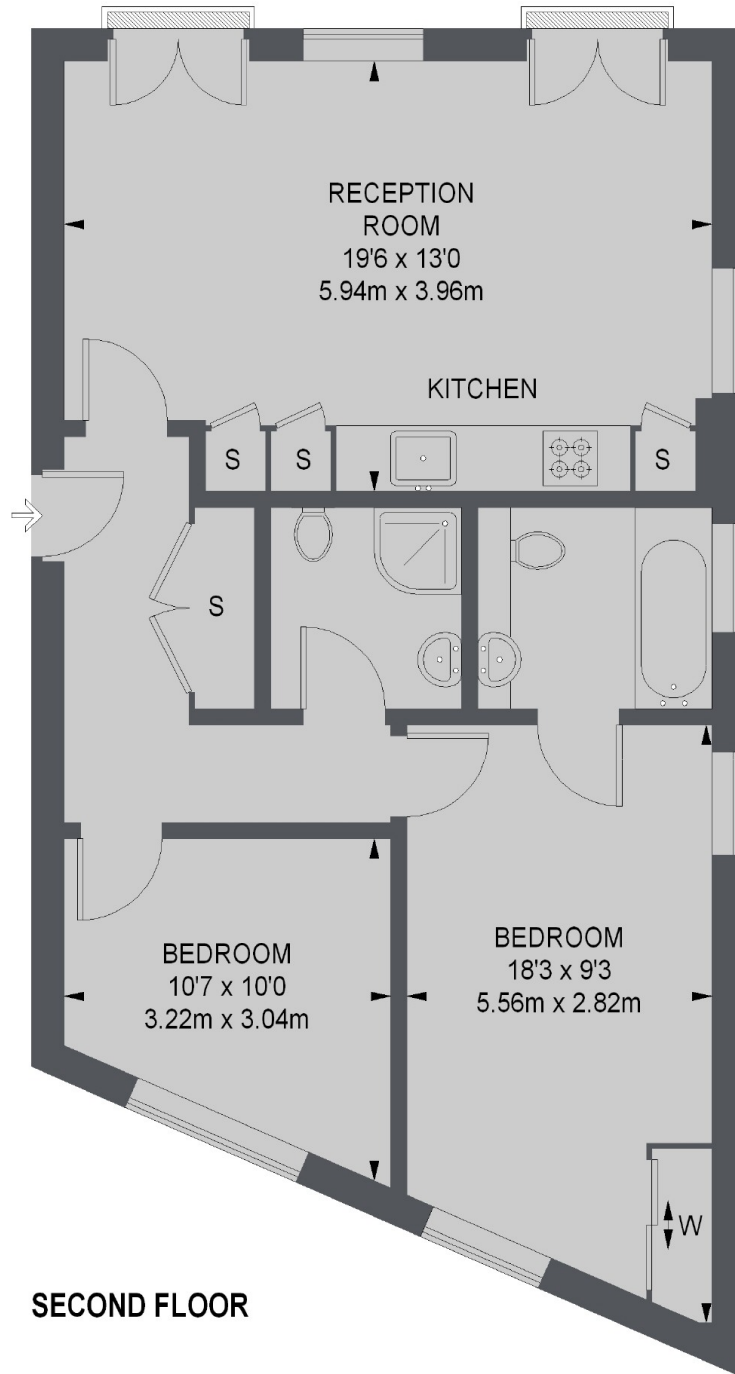
A bright and spacious contemporary one double plus one single bedroom apartment located in quiet residential street in Camden. The property offers a large reception room with wood flooring, a stylish fitted open-plan kitchen with integrated appliances and two modern bathrooms.

Belvard Point is ideally located for Camden Road and Camden Town stations within easy reach of the famous Camden Market.

### Features

- Modern Apartment
- Good Location
- Two Bathrooms
- Stylish Interior
- Lift Access
- Juliet Balcony

Murray Street,  
London, NW1



TOTAL APPROX. FLOOR AREA  
671 SQ. FT. (62.3 SQ. M.)