



Guide Price
£300,000

Leasehold

2x  2x  2x 

**Fleur de Lis, Bolnore
Road, Haywards Heath,
West Sussex, RH16**

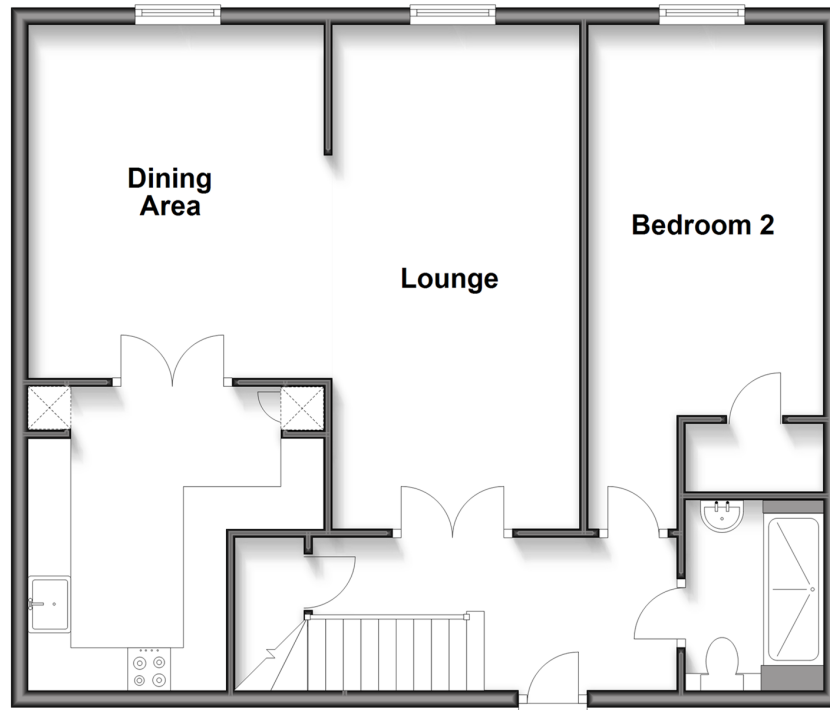
OVER 60?

Secure this property
for up to **59% less!**

cubitt & west
Helping you move forwards

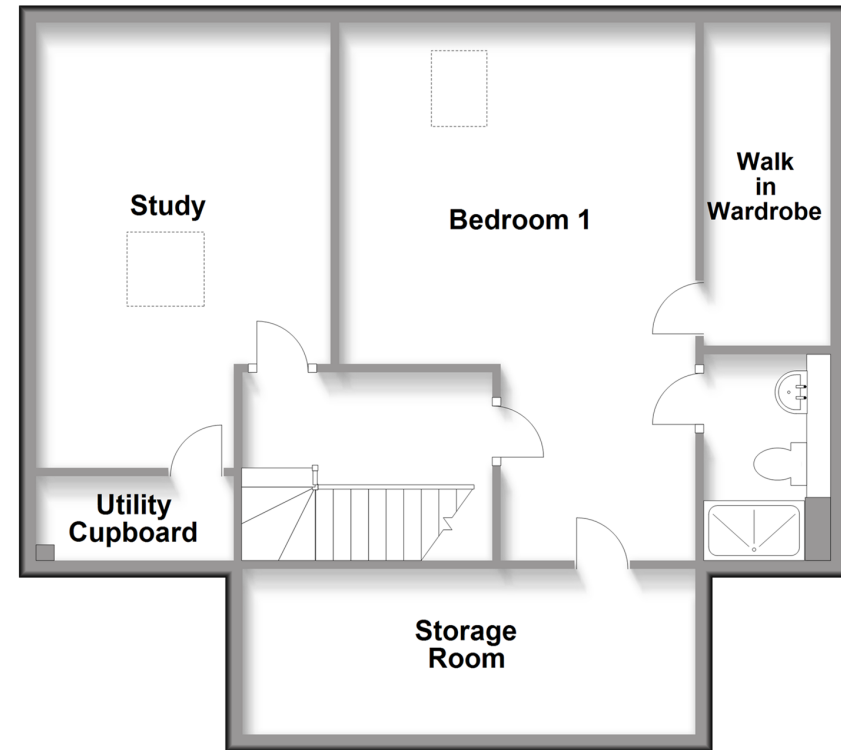
Second Floor

Approx. 72.7 sq. metres (782.3 sq. feet)



Split Level Third Floor

Approx. 69.3 sq. metres (746.1 sq. feet)



Accommodation

SECOND FLOOR

Entrance Hallway

Lounge : 19'5 x 9'6 (5.92m x 2.90m)

Dining Area: 13'6 x 11'7 (4.12m x 3.53m)

Kitchen: 11'9 x 11'3 (3.58m x 3.43m)

Bedroom 2: 19'6 x 9'6 (5.95m x 2.90m)

Shower Room

THIRD FLOOR

Landing

Bedroom 1: 20'7 at widest point x 13'8 at widest point (6.28m x 4.17m)

En-Suite shower room

Walk-in Wardrobe: 17'9 x 6'4 (5.41m x 1.93m)

Study: 16'5 x 11'5 (5.01m x 3.48m)

Storage Room

Utility Cupboard

OUTSIDE

Communal Gardens



Main features

- No forward chain
- Car parking space available from the builder manager (additional cost)
- Close to town centre & train station
- Independent luxury living apartment for over 60's
- 115 Years remaining on the lease
- High quality finishes throughout
- Security entrance system & on call concierge
- En-suite shower room & bathroom

Nearest Schools

Primary Schools: St Joseph's Catholic Primary, Haywards Heath 0.5 miles, Heyworth Primary 0.7 miles, St Wilfrid's CofE Primary, Haywards Heath 0.9 miles

Secondary Schools: Warden Park School 0.9 miles, Oathall

Transport Information

Train Stations: Haywards Heath 0.4 miles, Wivelsfield 2.3 miles, Burgess Hill 3.2 miles

Address

Fleur de Lis, Bolnore Road, Haywards Heath, West Sussex, RH16

Directions

For directions to this property please contact us.



cubitt&west
Helping you move forwards

Call Haywards Heath Branch 01444 411132 ■ cubittandwest.co.uk



- Legal advice should be taken to verify fixtures/fittings, planning, alterations and/or lease details
- Appliances & services are untested, dimensions are approximate and floor plans are not to scale
- Through a Homewise Home For Life Plan people aged 60+ can secure this property for up to 50% less, by purchasing a Lifetime Lease.



22705347/20250918/DD/DD