



Wyndham Apartments, 65 River Gardens Walk, Greenwich SE10 0TZ



Wyndham Apartments, Greenwich SE10

Leasehold (986 years remaining)

This stunning 8th floor apartment has the most incredible Southerly facing panoramic views over the rooftops to Royal Greenwich Park and the Thames to the West.

Key Features

- 2 Double bedrooms, 1 Bathroom
- Large private balcony
- No onward chain
- Council Tax: **E**
- Service Charge: **£3,500 P/A**
- Ground Rent: **£400 P/A**
- Excellent transport links
- EPC: **B**

The apartment itself reflects modern design principles with well-proportioned rooms that maximise both natural light and the stunning vistas beyond. The generous balcony serves as an extended living space, perfect for entertaining or simply enjoying the ever-changing river tableau throughout the seasons. Premium finishes throughout create an atmosphere of sophisticated urban living, while the thoughtful layout ensures optimal use of the 767 square feet.

Residents of River Gardens benefit from an impressive array of leisure facilities that rival those of a luxury hotel. The development features a fully equipped gymnasium, swimming pool for year-round use, and a tennis court for active recreation. The 24-hour concierge service provides both security and convenience, while underground parking ensures secure vehicle storage - a valuable asset in central London.

Greenwich offers an exceptional blend of maritime history, royal heritage, and contemporary culture. The UNESCO World Heritage site encompasses the National Maritime Museum, Royal Observatory, and the magnificent grounds of Royal Greenwich Park.









Wyndham Apartments, SE10

Approximate Gross Internal Area = 71.3 sq m / 767 sq ft

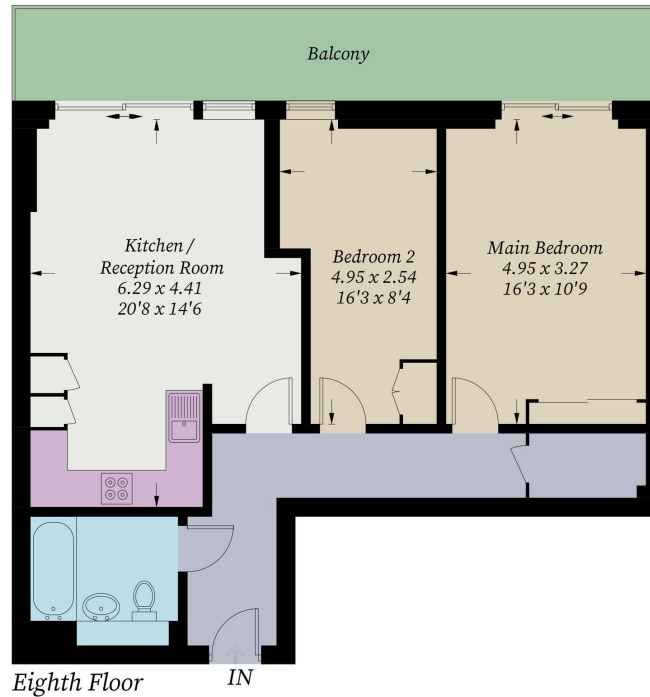


Illustration for identification purposes only, measurements are approximate, not to scale. Fourlabs.co © (ID1270034)