



## Horn Lane, W3

£385,000

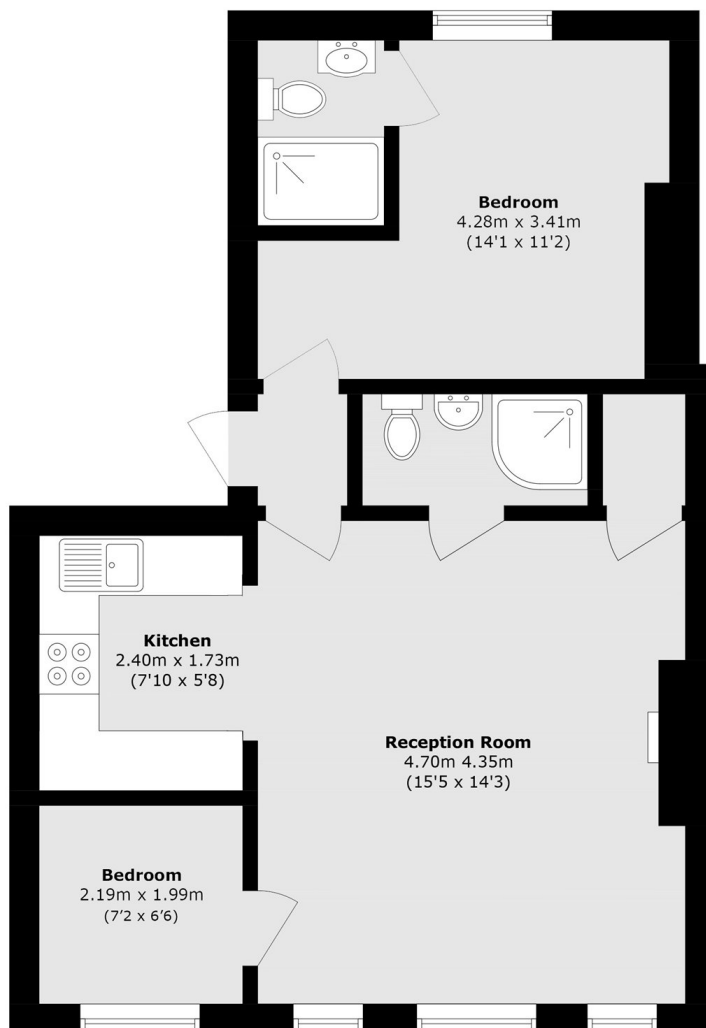
A first floor period conversion spanning over 550 sq ft of lateral living space with high ceilings, period features with a flood of natural light. Horn lane is perfect for commuters who access central London with a short walk to the Elizabeth line, Spingfield Park and the deli's and café's in Churchfield Road.

Just over five minutes walk from Acton Main Line station (Elizabeth line) and just over half a mile from Acton Central station (Overground).

### Features

- Two Bedroom
- Two Bathroom
- Period Conversion
- Share of Freehold
- Elizabeth line

# Horn Lane, London, W3



Total area (approx.): 51.2 sq. m (551.1 sq. ft)