

16 Queningate Mews, Havelock Street, Canterbury, Kent, CT1 1GU

£990 PCM

- WIFI ENABLED
- CLOSE TO CHRIST CHURCH & CITY CENTRE
- BILLS PACKAGE AVAILABLE
- 1 BATHROOMS
- COURTYARD GARDEN
- STUDENT STUDIO
- 1 BEDROOMS
- 1 RECEPTION ROOMS
- FURNISHED PROPERTY

16 Queningate Mews, Canterbury CT1 1GU

STUDENTS & PROFESSIONALS WELCOME - AVAILABLE 2025 / 2026 - WIFI INCLUDED.

This stylish apartment is available to students & professionals. Queningate Mews in Havelock Street is a minutes' walk from Christchurch University and a short walk from the bus station & city centre. Tucked away in a quiet location within the development, this is the perfect apartment to choose. Designed with convenience in mind the property is equipped with full fibre broadband and numerous USB sockets and furnished with a double bed with storage under, wardrobe, desk and chair. The kitchen is supplied with a fridge freezer, 2 ring hob, electric oven, microwave, and washer dryer. The bathroom is fitted with a generous shower, wash hand basin and toilet. No Parking available.

Bills package available on request. (Based on Single occupancy for a 12 month Tenancy)

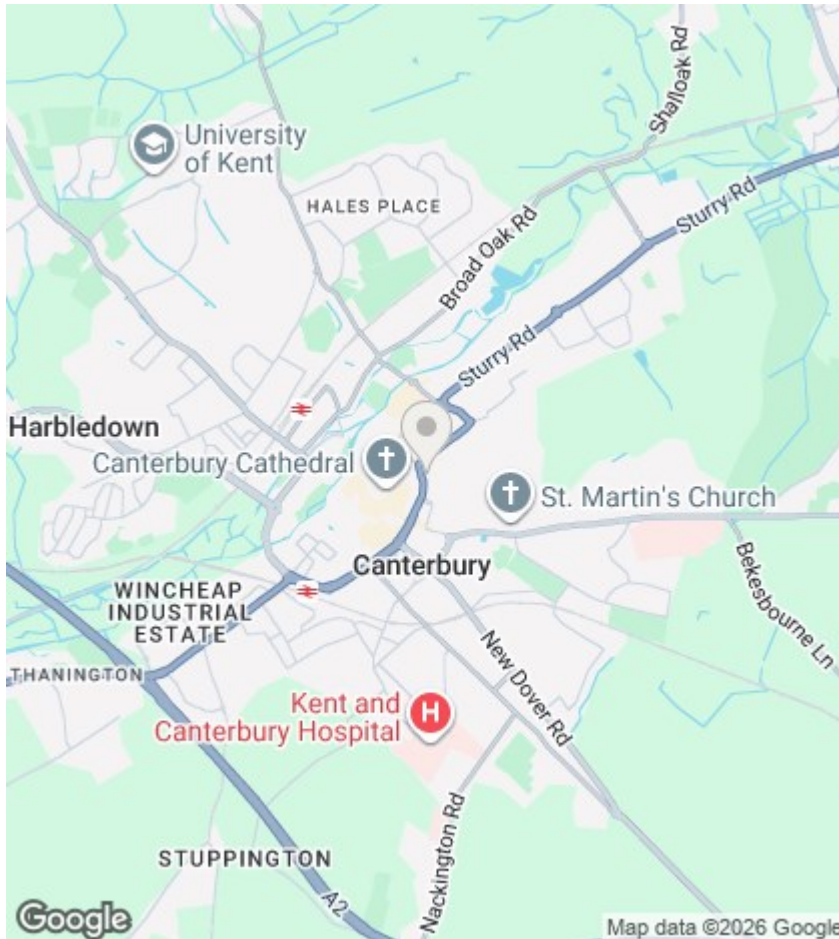
Contact us to arrange a viewing.

Council Tax Band for property is - A



Council Tax Band: A





Directions

Viewings

Viewings by arrangement only. Call 01227788088 to make an appointment.

EPC Rating:

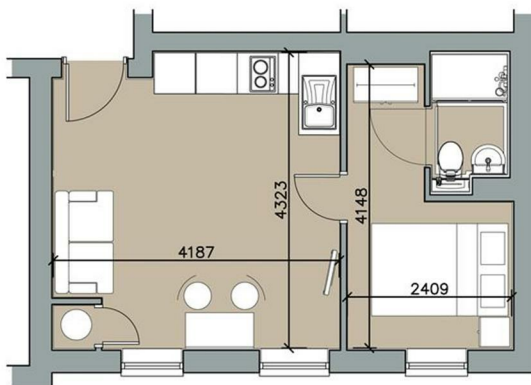
B

Energy Efficiency Rating		
	Current	Potential
Very energy efficient - lower running costs		
(92 plus) A		
(81-91) B	82	82
(69-80) C		
(55-68) D		
(39-54) E		
(21-38) F		
(1-20) G		
Not energy efficient - higher running costs		
England & Wales	EU Directive 2002/91/EC	

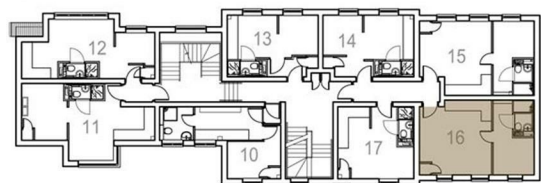
QUENINGATE MEWS

HAVELOCK STREET CANTERBURY

16.



KEY



FIRST FLOOR

