



143 Bagley Close, Kennington OX1 5LU



143 Bagley Close

An extremely well located, extended, semi-detached family home situated within a stone's throw of Bagley Woods within the sought after and well serviced village of Kennington. Offering spacious, light and highly versatile accommodation over its two floors, benefiting from a ground floor WC, single garage and 170' mature rear garden. Offered to the market with the security of no onward chain.

Situated in an established location towards the heart of this popular village, the property offers easy access to many amenities including good schools, several shops, church and public houses. There is an excellent bus service from both Oxford city (circa. 2 miles) and nearby Abingdon town (circa. 5 miles) and the nearby A34 offers easy road links to many important destinations.

Bedrooms: 3

Bathrooms: 1

Reception Rooms: 2

Council Tax band: D

Tenure: Freehold

EPC Energy Efficiency Rating: C





Key Features

- Extended semi detached family home
- Ground floor WC
- Large, versatile open plan living accommodation
- Re-fitted kitchen/breakfast room
- Three bedrooms
- Re-fitted family bathroom
- Single garage & driveway parking
- 170' Rear garden





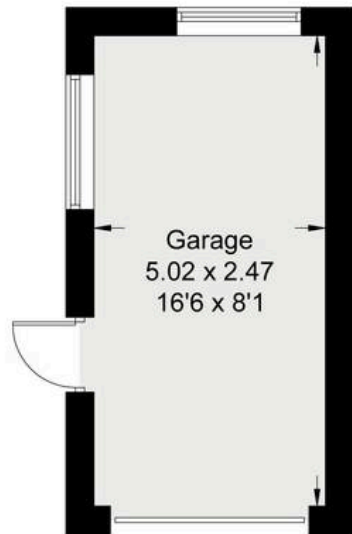
Bagley Close, OX1

Approximate Gross Internal Area = 93.60 sq m / 1008 sq ft

Garage Area = 12.40 sq m / 133 sq ft

Total Area = 106.0 sq m / 1141 sq ft

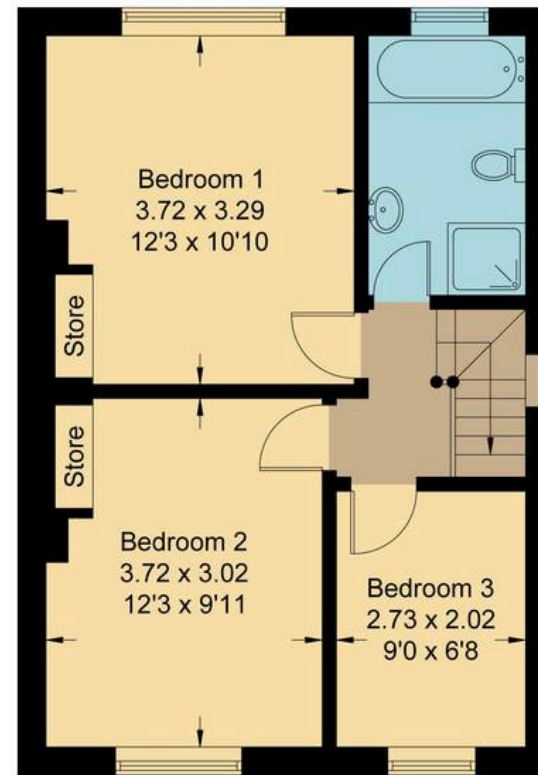
For identification only - Not to scale



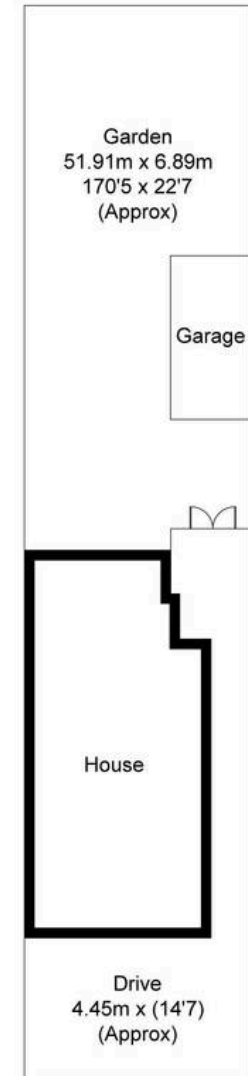
(Not Shown In Actual Location / Orientation)



Ground Floor



First Floor



Not to scale, for illustration and layout purposes only.
© Mortimer Photography. Produced for Hodsons.
Unauthorised reproduction prohibited



Hodsons
your move, our passion
Sales | Lettings

5 Ock Street, Abingdon,
Oxfordshire, OX14 5AL
T: 01235 553686
E: abingdon@hodsons.co.uk
www.hodsons.co.uk