



**POOLE
TOWNSEND**

Kirkby in Furness

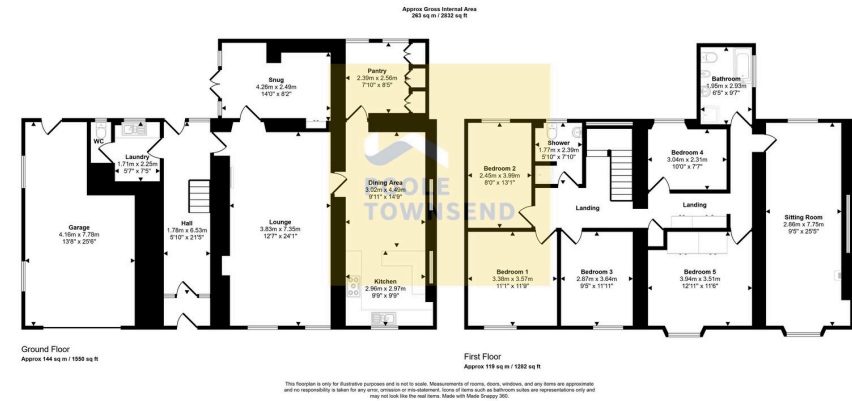
£550,000

5 2 3



- Fabulous 5 Bedroom Family Home
- Large Rear Garden
- 2 Bathrooms and Downstairs W/C
- Fantastic Views across Duddon Estuary and to the Mountains
- Freehold
- Easy Access to the Cumbrian Lakes and Fells
- Quiet Rural location
- Large Kitchen/Dining Room With Seperate Pantry





This charming property is located in the quiet hamlet of Wall End in Kirkby-in-Furness, a village that nestles along the shores of the Duddon Estuary. The property has been significantly extended and improved over the years by the current homeowners. The extensive and versatile accommodation will appeal to families and buyers attracted by this beautiful rural area, country walks and easy access to the lakes and fells. On the ground floor the accommodation features a large reception room and a snug that has access to the garden, an open plan kitchen-dining room with a separate pantry. The hallway also gives access to a utility room and a WC. The landing leads to five bedrooms, a shower room, a bathroom and a large flexible room that is currently a study/home office and private sitting room. The property has a mains gas supply running the central heating system.



Visit us at
www.pooletownsend.co.uk
enquiries@pooletownsend.co.uk

We are open
 Monday – Friday 9.00 – 5.00
 Saturday 9.00 – 1.00

Barrow 01229 811811
 Ulverston 01229 588111
 Grange 015395 33316
 Kendal 01539 734455
 Milnthorpe 015395 62044