

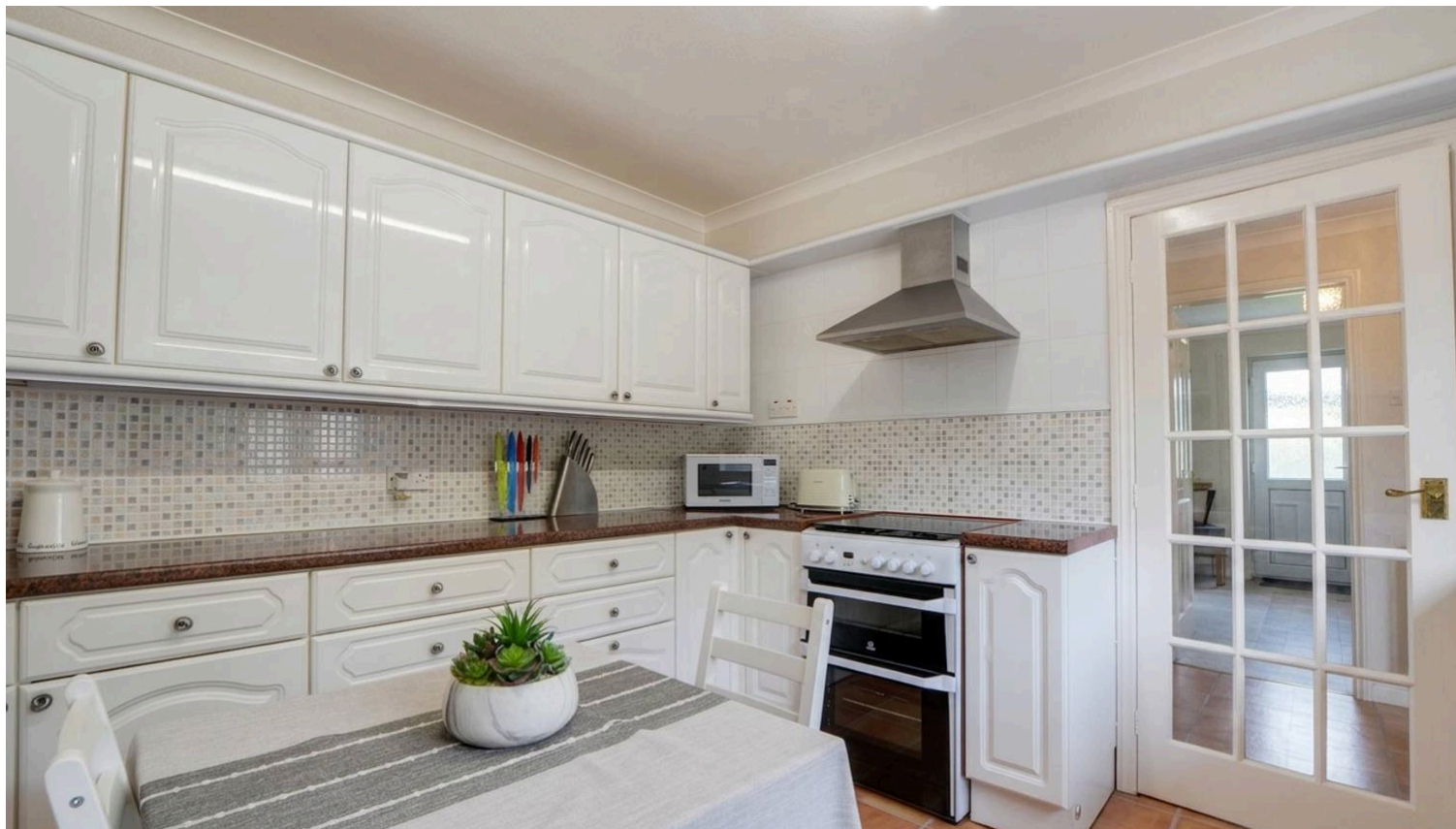


Saffron Lane, Aylestone

£425,000 Freehold

Spacious detached bungalow positioned on a generous plot in Aylestone, featuring three bedrooms, conservatory, breakfast kitchen, two garages, and extensive off-road parking.





Entrance Hall

Entered via a double-glazed composite front door. Features wood-effect flooring, coving to the ceiling, a dado rail, and a radiator.

Lounge

17' 4" x 13' 8" (5.29m x 4.17m)

A spacious, light, and airy living room boasting plenty of natural light from a double-glazed window and a double-glazed door to the side elevation. Features a chimney breast incorporating an electric fire with a granite surround and hearth, a television point, a radiator, and double doors opening into the dining room.

Dining Room

11' 9" x 9' 6" (3.57m x 2.89m)

Features a double-glazed bow window to the side elevation. Includes wood-effect laminated flooring, coving to the ceiling, a radiator, a door to the kitchen, and double doors leading into the conservatory.



Conservatory

12' 7" x 10' 0" (3.84m x 3.04m)

Bright space with double-glazed windows to the side and rear elevations, plus double-glazed doors opening out to the rear garden. Finished with ceramic tiled flooring and an electric wall-mounted heater.



Breakfast Kitchen

11' 2" x 10' 11" (3.41m x 3.32m)

Charming space with a double-glazed window to the side elevation. Appointed with stone-effect flooring, a range of white base and wall units, and granite-effect roll-edge laminated work surfaces incorporating a stainless steel sink, drainer, and mixer tap. Offers space for a freestanding gas hob and double oven with an extraction hood overhead. Finished with coving to the ceiling and a door back to the hallway.

Utility Room

6' 10" x 5' 3" (2.09m x 1.60m)

Features a double-glazed window to the front elevation, a double base unit with a work surface, a stainless steel sink with a mixer tap and drainer, plumbing for a washing machine, and tiled splashbacks. Includes a direct access door to the double garage.

Bedroom One

12' 0" x 11' 4" (3.67m x 3.45m)

A nicely decorated double room with a double-glazed window to the rear elevation, coving to the ceiling, a radiator, and a door to the ensuite.

Ensuite

8' 4" x 5' 3" (2.54m x 1.61m)

Features an obscure double-glazed window to the side elevation, ceramic tiled flooring, a shower cubicle with a shower screen, a low-level WC, a wash hand basin, fully tiled walls, and a radiator.









Bedroom Two

11' 11" x 10' 1" (3.62m x 3.07m)

A nicely decorated bedroom with a double-glazed window to the rear elevation, coving to the ceiling, a dado rail, and a radiator.

Bedroom Three

9' 8" x 8' 8" (2.95m x 2.65m)

Includes a double-glazed window to the rear elevation, coving to the ceiling, and a radiator.

Bathroom

10' 1" x 5' 9" (3.07m x 1.76m)

With an obscure double-glazed window to the rear elevation, ceramic tiled flooring, a bath with a shower over, a low-level WC, a wash hand basin, vinyl flooring, fully tiled walls, and a radiator.

Front Garden

Features the block-paved driveway, a front lawn area, a patio, and well-maintained borders.

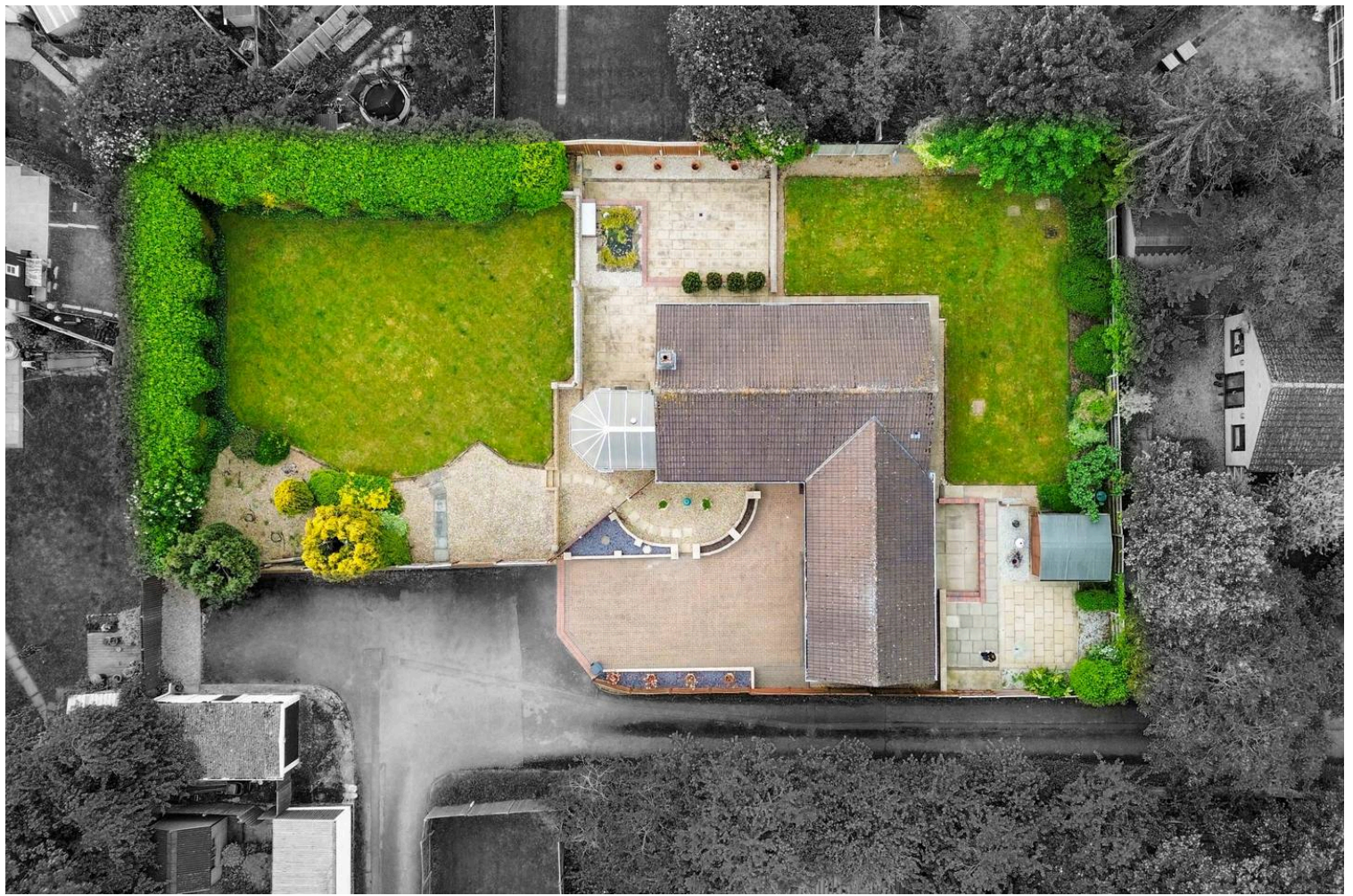
Rear Garden

A continuous layout featuring a side lawn and patio, moving into a rear lawn and patio area with well-maintained fence perimeter borders.



FLOOR PLAN CREATED BY CUBICASA APP. MEASUREMENTS DEEMED HIGHLY RELIABLE BUT NOT GUARANTEED.





The property is ideally situated for everyday amenities along Aylestone Road within Aylestone and local schooling, including Granby Primary School and Montrose School. Within reach are local sporting facilities such as Grace Road Cricket Ground, King Power Football Stadium and Leicester Tigers Stadium further afield. Regular bus routes running to and from Leicester City Centre and the main ring road are also within reach, giving easy access to M1 & M69 motorway junctions. Fosse Retail Park is also within reach.

Council Tax band: D

Tenure: Freehold

EPC Energy Efficiency Rating: D

We'll keep you moving...



We must inform all prospective purchasers that the measurements are taken by an electronic take and are provided as a guide only and they should not be used as accurate measurements. We have not tested any mains services, gas or electric appliances, or fixtures and fittings mentioned in these details, therefore, prospective purchasers should satisfy themselves before committing to purchase. Intending purchasers must satisfy themselves by inspection or otherwise to the correctness of the statements contained in these particulars. Knightsbridge Estate Agents (nor any person in their employment) has any authority to make any representation or warranty in relation to the property. The floor plans are not to scale, and are intended for use as a guide to the layout of the property only. They should not be used for any other purpose. We are required by law to conduct anti-money laundering checks on all those selling or buying a property. Whilst we retain responsibility for ensuring checks and any ongoing monitoring are carried out correctly, the initial checks are carried out on our behalf by Lifetime Legal who will contact you once you have agreed to instruct us in your sale or had an offer accepted on a property you wish to buy. The cost of these checks is £60 (incl. VAT), which covers the cost of obtaining relevant data and any manual checks and monitoring which might be required. This fee will need to be paid by you in advance of us publishing your property (in the case of a vendor) or issuing a memorandum of sale (in the case of a buyer), directly to Lifetime Legal, and is non-refundable. We will receive some of the fee taken by Lifetime Legal to compensate for its role in the provision of these checks.