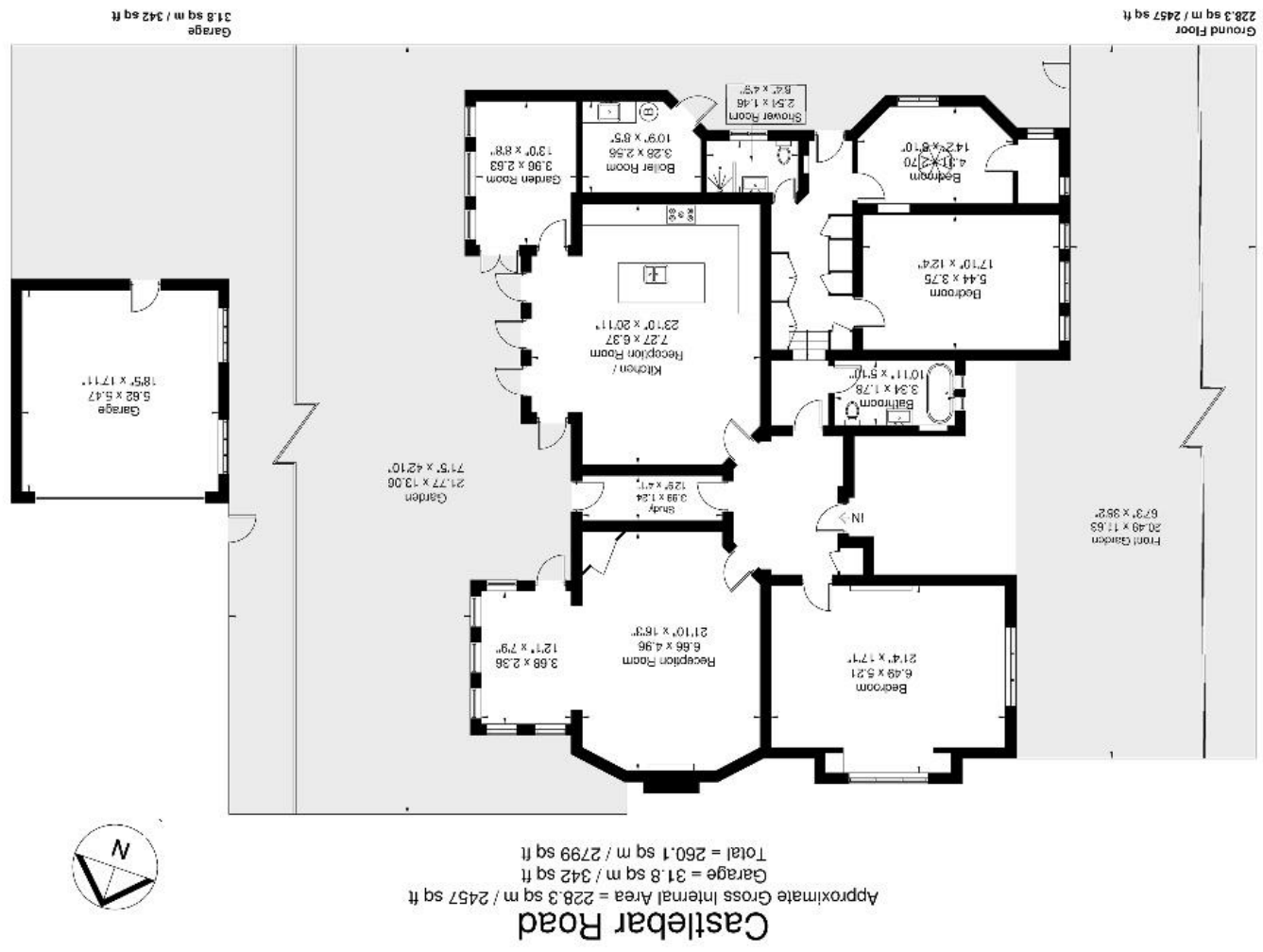


Although every attempt has been made to ensure accuracy, all measurements are approximate. The floorplan is for illustrative purposes only and not to scale.
 © www.prspective.co.uk





A MAGNIFICENT THREE-BEDROOM, TWO-BATHROOM GARDEN FLAT OCCUPYING THE WHOLE GROUND FLOOR OF THIS WONDERFUL DETACHED PERIOD HOME OF HISTORIC INTEREST

No 70a is well situated by Ealing Abbey being close to both Ealing Broadway with its busy town centre and Elizabeth / Crossrail line close at hand, alongside Central, District and main lines plus an array of excellent bus services. Also, well placed for many good schools including St Benedict's, Durston House and Notting Hill, to name a few.

This stunning ground floor conversion enjoys an elegant reception room. Stunning kitchen / dining room. Study. Walk-in library / storage room. Three double bedrooms. Two stylish bathrooms. Double garage with forecourt parking. Own private rear garden and front garden. A wealth of period features.

LEASE: 999 Years from 24th June 1983
SERVICE CHARGE: £400.00 p.a

COUNCIL TAX BAND: F **EPC Rating: C**

