

Callaghans

Independent Estate Agents, Surveyors, Valuers and Mortgage Brokers

Apartment 6, 163, Haslington Road **Manchester, M22 5HR**



£165,000

Well Presented Second Floor Apartment
Two Double Bedrooms
Open Plan Living/Dining Room
Fitted Kitchen
Modern Bathroom
Off-Road Parking

Callaghans Estate Agents
46 Church Road, Gatley, SK8 4NQ
Telephone: 0161 491 4000, Fax: 0161 491 55 44
Website: www.callaghansltd.com Email: admin@callaghansltd.com

Callaghans are delighted to offer for sale this spacious and well-presented two-bedroom second floor apartment, ideally located in the ever-popular Peel Hall area. Situated on the top floor, the apartment makes an excellent first impression from the moment you step into the welcoming entrance hallway.

From the hallway, there are two generous double bedrooms positioned to the left, both offering comfortable and versatile relaxed space. Directly ahead is the stylish bathroom, finished with modern fittings, a contemporary suite, grey tiled walls and an over-bath shower. The bright and airy lounge benefits from double windows that flood the room with natural light. Adjoining the lounge is a semi open-plan kitchen, fitted with modern floor and wall units and complete with integrated sink, hob and oven, creating a practical and attractive living area ideal for modern lifestyles.

This well-presented apartment would be an excellent choice for young professionals taking their first step onto the property ladder, or for those looking to downsize while remaining in a convenient and sought-after location.

Lounge 17' 9" x 13' 11" (5.4m x 4.23m)

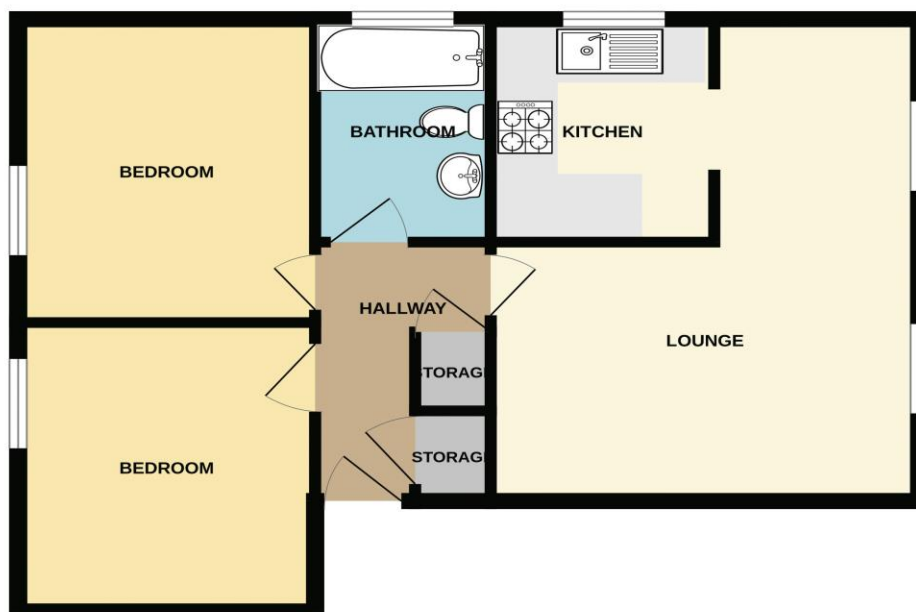
Kitchen 8' 0" x 7' 3" (2.43m x 2.2m)

Bathroom 5' 8" x 8' 2" (1.73m x 2.49m)

Bedroom One 11' 1" x 8' 2" (3.39m x 2.49m)

Bedroom Two 9' 9" x 10' 7" (2.96m x 3.23m)

GROUND FLOOR
556 sq.ft. (51.6 sq.m.) approx.



TOTAL FLOOR AREA: 556 sq.ft. (51.6 sq.m.) approx.
Whilst every attempt has been made to ensure the accuracy of the floorplan contained here, measurements of doors, windows, rooms and any other items are approximate and no responsibility is taken for any error, omission or mis-statement. This plan is for illustrative purposes only and should be used as such by any prospective purchaser. The services, systems and appliances shown have not been tested and no guarantee as to their operability or efficiency can be given.
Made with Metropix ©2025

Disclaimer:

These particulars, whilst believed to be accurate are set out as a general guideline only or guidance and do not constitute any part of an offer or contract. Intending purchasers should not rely on them as statements of representation or fact, but must satisfy themselves by inspection or otherwise as to their accuracy. Please note that we have not tested any apparatus, equipment, fixtures, fittings or services, including gas central heating and so cannot verify they are in working order or fit for their purpose. Further more solicitors should confirm movable items described in the sales particulars are, in fact included in the sale since circumstances do change during marketing or negotiations. Although we try to ensure accuracy, measurements used in this brochure may be approximate. Therefore if intending purchasers need accurate measurements to order carpeting or to ensure existing furniture will fit, they should take such measurements themselves. **YOUR HOME IS AT RISK IF YOU DO NOT KEEP UP REPAYMENTS ON A MORTGAGE OR OTHER LOAN SECURED ON IT**