



Falcon

01752 600444

33 Burnham Park Road

Peverell, Plymouth, PL3 5QB

Guide Price £350,000 - £375,000





In Brief

Stunning Detached Family Home with Stylish Interiors, Views & Sun-Soaked Garden

Reception Rooms Large full width living room / dining room

Bedrooms 3 double bedrooms

Heating Gas central heating

Parking Driveway parking to front

Area 1102 sq ft

Council Tax C

Tenure Freehold

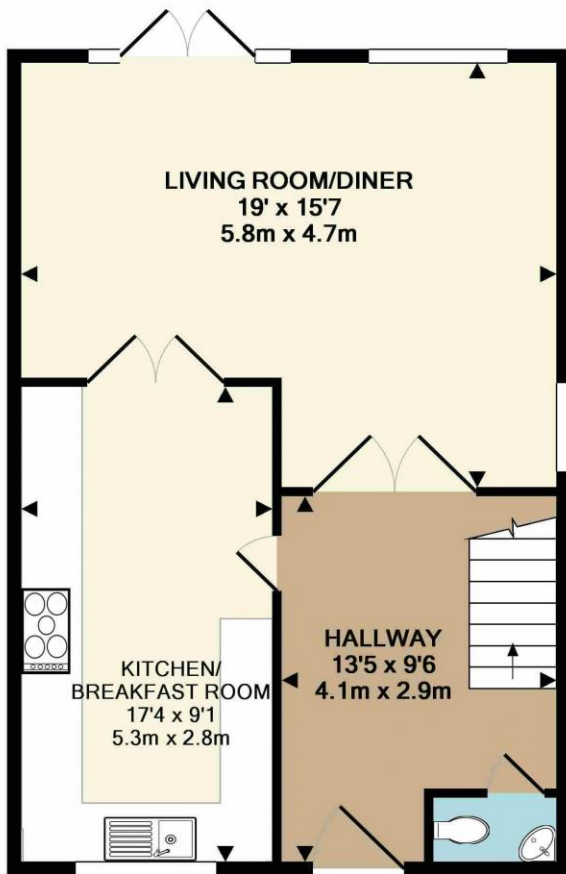
Description

Beautifully positioned between Peverell and Hartley, this stunning detached family home has been extensively modernised to create a stylish and contemporary living space. With off-road parking to the front, the property immediately impresses, while inside a welcoming hallway showcases elegant oak and glass detailing to the staircase, along with a convenient downstairs W/C. The striking kitchen is superbly appointed with a full range of integrated appliances and space for casual dining. Double oak doors from both the kitchen and hallway open into a full-width living/dining room, creating a fantastic open-plan feel. French doors lead directly out onto the large decking area that leads down to the lawned garden, perfect for all the family and entertaining. Upstairs, there are three generous double bedrooms and a beautifully finished family bathroom that has both a shower and a bath. The rear outlook is truly special, with far-reaching views across Plymouth towards Mount Edgumbe and The Hoe. Outside, the enclosed rear garden is mainly laid to lawn, complemented by a fabulous decked seating area adjoining the house—an ideal sun trap for relaxing or socialising. With gas central heating, uPVC double glazing, and excellent local schools nearby, including Hyde Park Primary and Kings Prep, this is a superb family home in a highly desirable location.

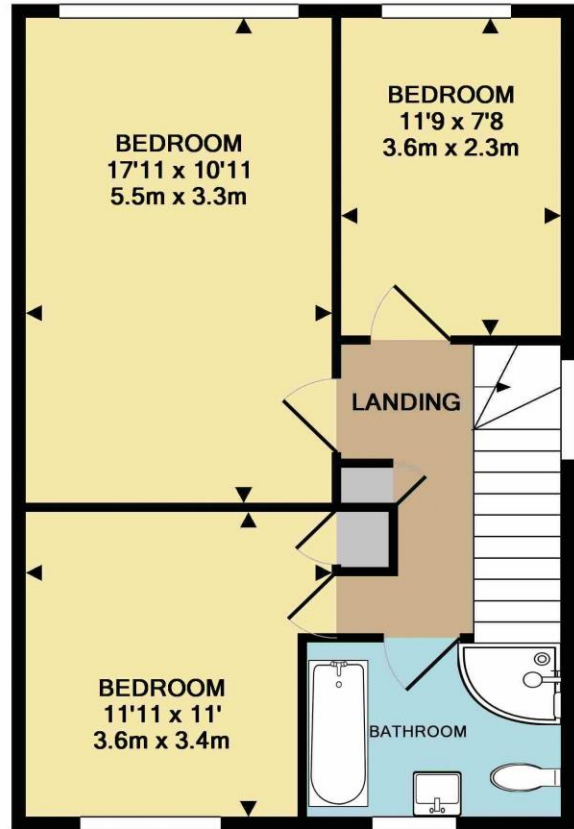
Need A Mortgage?

Don't pay more than you need to for your mortgage advice:
ours is only £195 paid when you move!

Floor Plans



GROUND FLOOR
APPROX. FLOOR
AREA 551 SQ.FT.
(51.2 SQ.M.)



1ST FLOOR
APPROX. FLOOR
AREA 551 SQ.FT.
(51.2 SQ.M.)

TOTAL APPROX. FLOOR AREA 1102 SQ.FT. (102.4 SQ.M.)
Made with Metropix ©2016



Fixed Price Conveyancing

A complete solution from just £600 with No sale – No Fee



We have not tested any apparatus, equipment, fixtures and fittings or services and so cannot verify that they are connected, in working order or fit for the purpose. Neither have we had sight of the legal documents to verify the Freehold or Leasehold status of any property; or sight of any consents, including Planning Permissions, building Regulations and Breaches of Covenants that may be required for alterations to the property. A buyer is advised to obtain verification from their Solicitor and/or Surveyor. Items shown in photographs are NOT included unless specifically mentioned within the Sales Particulars. Any floor plans on these details are not drawn to scale and are intended for guidance only

Falcon Property is an Introducer to Bradleys Financial Management Ltd. They are appointed representatives of Sesame Ltd who are authorised and regulated by the Financial Services Authority. Bradleys do not charge for mortgage advice, however a fee paying option is available. Typical fee is £195. Bradleys Financial Management: 16 Mannamead Road, Mutley, Plymouth, PL4 7AA

Your home may be repossessed if you do not keep up repayments on your mortgage.

