



PLOUGH LANE, SW17

£2,600 PCM

- Modern Apartment
- 24 Hour Concierge
- Two Double Bedrooms
- Large Private Balcony
- Local Amenities
- Energy rating: B





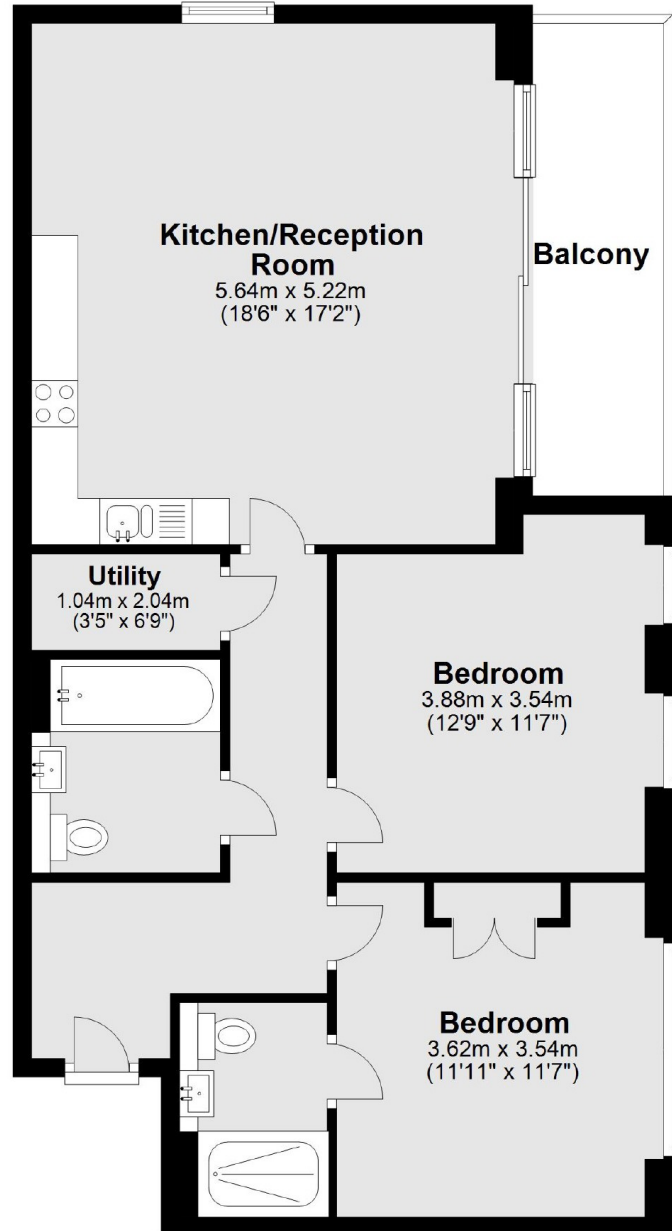
ABOUT THE HOME

A two double bedroom apartment with large private balcony in the popular Plough Lane development. A two double bedroom, two bathroom new build apartment located on the 3rd floor. There is a large private balcony with views of the communal gardens and with the added benefit of a concierge.

This property is accessible to Earlsfield, Tooting and Haydons Road stations.







Main area: Approx. 77.0 sq. metres (829.0 sq. feet)

Plus balconies, approx. 7.9 sq. metres (85.3 sq. feet)

JACKSONS EARLSFIELD

372-374 Garratt Lane,
Earlsfield, London, SW18 4ES
Sales: 020 8971 7979
Lettings: 020 8971 7070

Energy Rating: B We aim to make our particulars both accurate and reliable. However they are not guaranteed; nor do they form part of an offer or contract. If you require clarification on any points then please contact us, especially if you're traveling some distance to view. Please note that appliances and heating systems have not been tested and therefore no warranties can be given as to their good working order.