

This deceptively spacious semi detached property is situated in a popular cul-de-sac on Cherque Farm. The property benefits from three double bedrooms, en suite to main bedroom, driveway and garage.

**The Accommodation Comprises**

Front door to;

**Entrance Hall**

Coved ceiling, thermostat control to wall, stairs to first floor, door to;

**Cloakroom 6' 0" x 3' 0" (1.83m x 0.91m)**

Obscured UPVC double glazed window to front elevation, close coupled WC, pedestal wash hand basin, radiator, fuse box to wall.

**Lounge 18' 7" x 12' 3" (5.66m x 3.73m) maximum measurements**

Coved ceiling, UPVC double glazed window to front elevation, two radiators, gas fireplace, understairs storage cupboard.

**Kitchen/Dining Room 15' 6" x 11' 1" (4.72m x 3.38m)**

UPVC double glazed window and double opening doors to conservatory, fitted with a range of base cupboards and matching eye level units, roll top work surfaces, tiled surround, stainless steel sink unit with mixer tap, fitted eye level electric oven, gas hob with extractor hood over, space and plumbing for washing machine, dishwasher and fridge freezer, cupboard housing boiler.

**Conservatory 19' 3" x 11' 2" (5.86m x 3.40m) maximum measurements**

Glass roof, UPVC double glazed windows and double opening doors to rear garden, tiled flooring with underfloor heating, courtesy door to garage.

**First Floor Landing**

Access to loft space, cupboard housing hot water tank.

**Bedroom One 12' 3" x 11' 11" (3.73m x 3.63m) plus wardrobes**

Coved ceiling, UPVC double glazed window to front elevation, fitted wardrobe, radiator, door to;

**En Suite 8' 5" x 5' 2" (2.56m x 1.57m)**

Extractor fan, shower cubicle with mains shower, wash hand basin set in vanity unit, close coupled WC, ladder style radiator, tiled flooring, partly tiled walls.

**Bedroom Two 19' 7" x 9' 8" (5.96m x 2.94m)**

Dual aspect with UPVC double glazed windows to front and rear elevations, two radiators.

**Bedroom Three 12' 4" x 8' 6" (3.76m x 2.59m) plus recess**

UPVC double glazed window to rear elevation, radiator.

**Bathroom 6' 8" x 6' 4" (2.03m x 1.93m)**

Extractor fan, obscured UPVC double glazed window to rear elevation, panelled bath with mixer tap and shower connection off, pedestal wash hand basin, close coupled WC, shaver socket, radiator, tiled flooring, partly tiled walls.

**Outside**

The rear garden is enclosed by panelled fencing and brick wall, paved for ease of maintenance, outside water tap, lights and power point. To the front the property benefits from a block paved driveway, outside power point, wall mounted meter cupboards and access to garage with electric up and over door with power and light connected.

**General Information**

Construction - Traditional

Water Supply - Portsmouth Water

Electric Supply - Mains

Gas Supply - Mains

Sewerage - Mains

Mobile & Broadband coverage - Please check via:

<https://checker.ofcom.org.uk/>

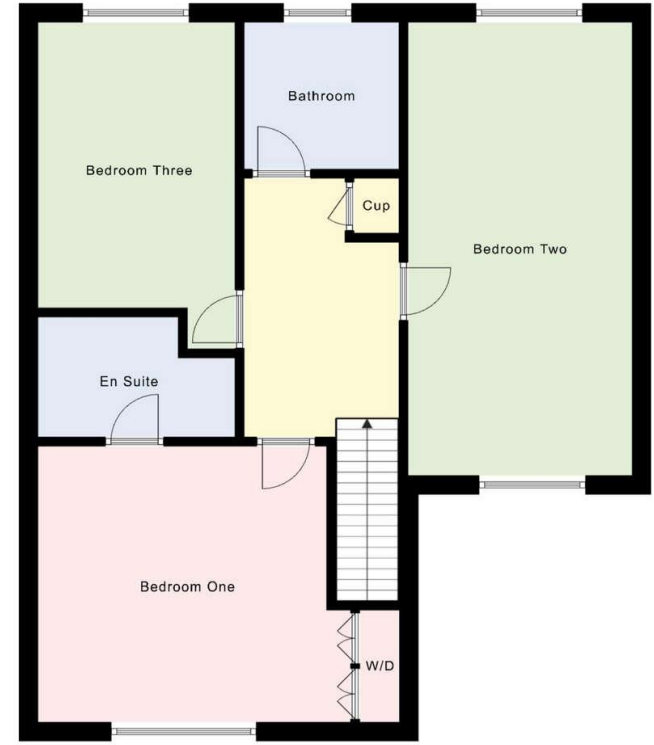
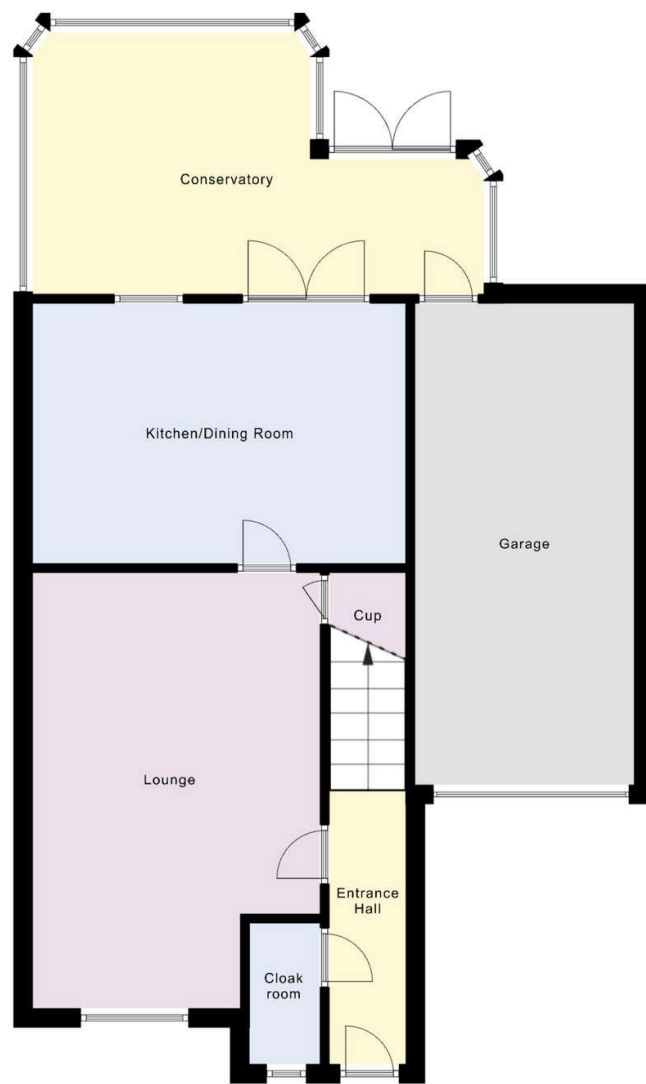
Flood risk - Please check via: <https://www.gov.uk/check-long-term-flood-risk>



Score	Energy rating	Current	Potential
92+	A		
81-91	B		
69-80	C		
55-68	D		
39-54	E		
21-38	F		
1-20	G		
		76 C	87 B

Tenure: Freehold

Council Tax Band: E



**Disclaimer:** These particulars are set out as a general outline in accordance with the Consumer Protection from Unfair Trading Regulations 2008 (CPR's) and Business Protection from Misleading Marketing Regulations 2008 (BPR's) only for the guidance of intending purchasers or lessees, and do not constitute any part of an offer or contract. Details are given without any responsibility, and any intending purchasers, lessees or third parties should not rely on them as statements or representations of fact, but must satisfy themselves by inspection or otherwise as to the correctness of each of them.

We have not carried out a structural survey and the services, appliances and specific fittings have not been tested. All photographs, measurements, floor plans and distances referred to are given as a guide only and should not be relied upon for the purchase of carpets or any other fixtures or fittings. Gardens, roof terraces, balconies and communal gardens as well as tenure and lease details cannot have their accuracy guaranteed for intending purchasers. Lease details, service ground rent (where applicable) are given as a guide only and should be checked and confirmed by your solicitor prior to exchange of contracts.

No person in the employment of Fenwicks Estates Ltd has any authority to make any representation or warranty whatever in relation to this property. Purchase prices, rents or other prices quoted are correct at the date of publication and, unless otherwise stated, exclusive of VAT.

**Data Protection:** We retain the copyright in all advertising material used to market this Property.

**Money Laundering Regulations 2017:** Intending purchasers will be required to produce identification documentation once an offer is accepted.



£425,000

Tiger Moth Close, Lee-On-The-Solent, PO13 8FU

\*DRAFT DETAILS\*

Fenwicks - Lee on the Solent Office: 02392 551 199 [www.fenwicks-estates.co.uk](http://www.fenwicks-estates.co.uk)

**Fenwicks**

THE INDEPENDENT ESTATE AGENT