



Evelyn Mansions  
Carlisle Place, SW1P

CHESTERTONS



FULHAM PERFORMANCE  
THIS IMAGE HAS BEEN VIRTUALLY STAGED  
FOR ILLUSTRATIVE PURPOSES



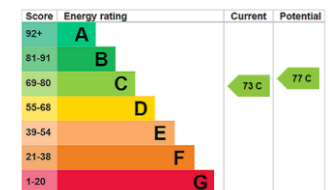


A grand and laterally spacious apartment situated within a sought after mansion block comprising three double bedrooms, two bathrooms, large reception room and separate large kitchen. This beautifully presented property has retained numerous period features and benefits from high ceilings through-out, lift access and day-time porter. It is offered to the market with no onward chain.

Evelyn Mansions is a sought after mansion block situated on Carlisle Place just off Victoria Street with Victoria station (Victoria, District and Circle lines, mainline station and Gatwick Express) only moments away. The property is in close proximity to some of London's most famous landmarks as well as a wide range of shops, bars, restaurants, theatres and the beautiful St. James's Park.

- Grand and laterally spacious apartment set within the highly sought-after Evelyn Mansions mansion block.
- Three generous double bedrooms and two bathrooms, offering excellent accommodation.
- Large reception room and separate spacious kitchen, ideal for both entertaining and everyday living.
- Beautifully presented throughout with high ceilings and a wealth of retained period features.
- Benefits from lift access, daytime porter service, and is offered with no onward chain.
- Prime Westminster location moments from Victoria Station

Asking Price £1,250,000



**Tenure:** Leasehold – 128 Years Remaining  
**Service Charge:** £5,500 Per Annum  
**Ground Rent:** Ask Agent  
**Local Authority:** Westminster  
**Council Tax Band:** F

*Chestertons Westminster & Pimlico Sales*

105 Wilton Road  
 London  
 SW1V 1DZ

westminster@chestertons.co.uk

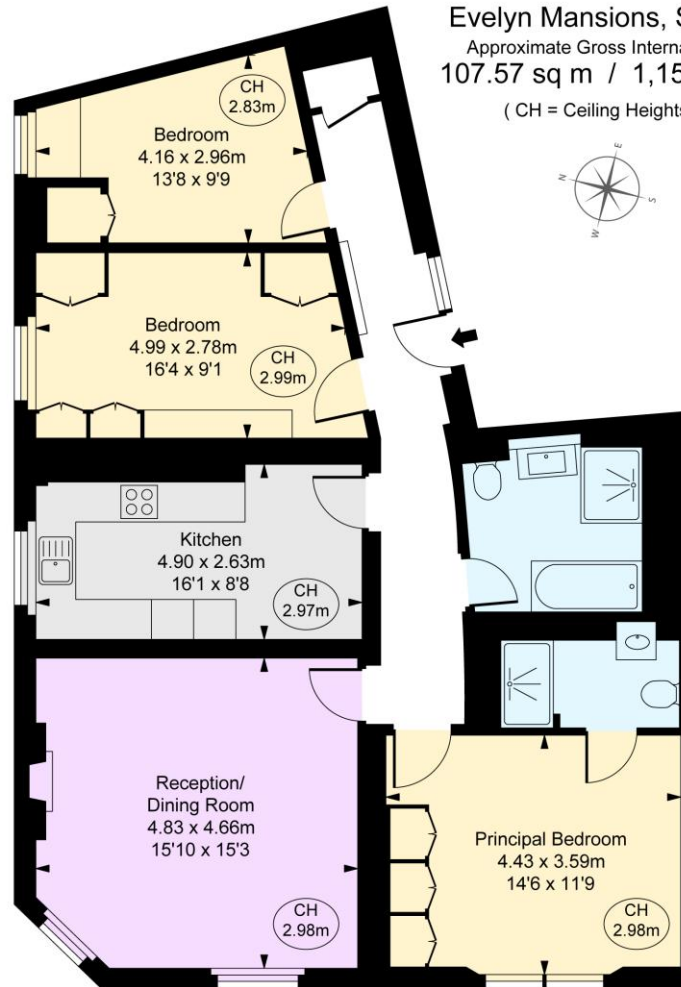
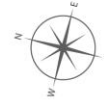
020 3040 8201

chestertons.co.uk

# Evelyn Mansions, SW1P

Approximate Gross Internal Area  
107.57 sq m / 1,158 sq ft

( CH = Ceiling Heights )



Second Floor



This plan is not to a given scale. A detailed layout plan to scale for replication is available on request. All measurements and areas are within 1% tolerance and have been prepared in accordance with industry standards as defined in the RICS Code of Measuring Practice.  
© Fulham Performance

Chesterton UK Services Limited trading as Chestertons for themselves and for the vendor of this property whose agents they are, give notice that (i) these particulars do not constitute any part of an offer or contract, (ii) all statements contained within these particulars are made without responsibility on the part of Chestertons or the vendor, (iii) whilst made in good faith, none of the statements contained within these particulars are to be relied upon as a statement or representation of fact, (iv) any intending purchasers must satisfy themselves by inspection or otherwise as to the correctness of each of the statements contained within these particulars, (v) the vendor does not make or give either Chestertons or any person in their employment any authority to make or give representation or warranty whatsoever in relation to this property. Wide angle lenses may be used. ©Copyright Chestertons | Chesterton UK Services Limited | Registered Office 5th Floor, The Lantern, 75 Hampstead Road, London, NW1 2PL Registered Company Number 05334580.



This paper is  
100% recyclable