



LEXHAM GARDENS, W8

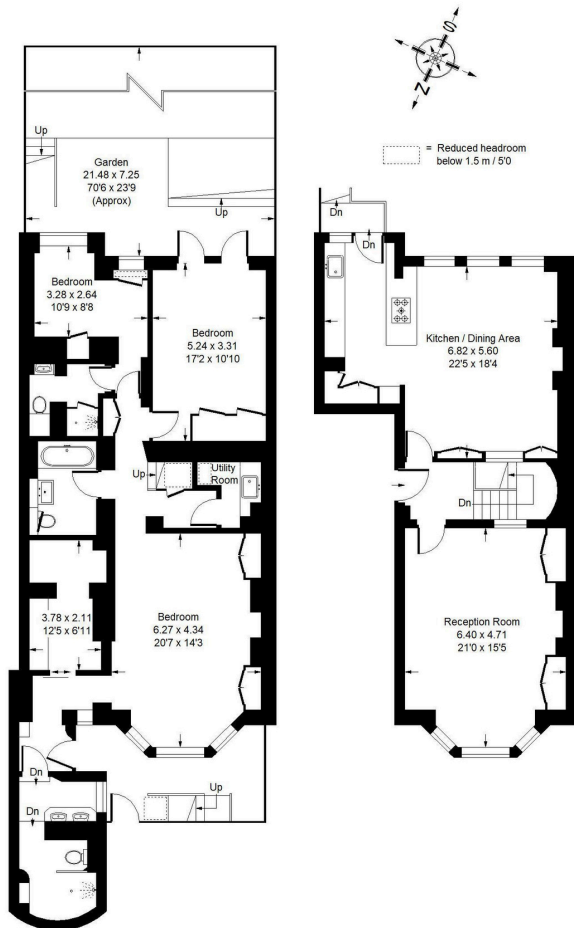


Lexham Gardens, W8

An impressive three double bedroom split-level apartment located on the ground and lower ground floor of a period stucco fronted Victorian building with a rare and exceptional 70ft private south facing garden. The property benefits from high ceilings in the both reception rooms, oak wood floors and original period features. At the lower level there are three bedrooms with fitted storage, the principal suite benefits from a walk-in wardrobe and an bespoke shower room. Further two bathrooms, utility room and ample storage throughout. Lexham Gardens is situated to the south of Kensington High Street. The open spaces of Kensington Gardens and Holland Park are nearby as well a vast number of local amenities in Stratford Road. Earls Court Station is also just a short walk away providing rapid access to Heathrow Airport via the Piccadilly Line.



Approx. Gross Internal Area
= 177 sq m / 1,905 sq ft



Lower Ground and Raised Ground Floor



Lexham Gardens, W8 - Share of Freehold Local Authority - Royal Borough of Kensington & Chelsea

- Three double bedrooms
- 70 ft private south-facing garden
- Impressive period features
- EPC rating: D
- Council tax band: G



Whilst every attempt has been made to ensure the accuracy of the floor plan, measurements are approximate and not to scale. No guarantee is given on the total square footage of the property quoted on the plan. Figures given are for guidance. Plan is for illustration purposes only, not to be used for valuations.