



The Farmhouse, Taylors Farm
Yarmouth Road | Corton | Suffolk | NR32 5NJ

 FINE & COUNTRY

GEORGIAN CHARACTER



Occupying a plot of approximately 0.61 acres in the coastal village of Corton.

The Farmhouse at Taylors Farm is a handsome detached Georgian residence believed to date back to the 1800s, combining Georgian character and Victorian features, scale and modern family living in equal measure.

Set behind a sweeping driveway and framed by wraparound gardens, this beautifully updated red brick farmhouse offers five generous bedrooms, expansive reception space and a superb balance between period charm and contemporary comfort, all within easy reach of the Suffolk coastline and surrounding countryside.



KEY FEATURES

- An Elegant Detached Georgian Farmhouse dating back to the 1800s in the Village Of Corton
- The Accommodation is Spread Over Three Floors
- Five Spacious Bedrooms including En-Suite Principal Bedroom
- Expansive Living Room with Excellent Proportions
- Stylishly Updated Kitchen and Bathrooms
- Character Features including Fireplaces, Beams and Exposed Brickwork
- The Plot extends to around 0.61 acres with Wraparound Gardens with Vegetable Plots and Two Greenhouses
- Large Driveway, Garage and Useful Outbuildings
- Conveniently Positioned for Corton Beach, Lowestoft and Great Yarmouth
- The Accommodation extends to 3,358sq.ft inc Garaging
- Energy Rating: TBA

The Farmhouse at Taylors Farm immediately impresses with its handsome red brick elevations and timeless Georgian architecture along with substantial Victorian features. Approached via a generous gravel driveway, the property enjoys a commanding yet peaceful setting, with mature planting, lawns and open skies creating a wonderfully rural feel despite the convenience of nearby amenities and transport links.

Inside, the home has been thoughtfully updated by the current owners, carefully balancing modern improvements with the character and warmth expected from a property of this era. Original fireplaces, exposed beams, timber floors and large sash-style windows all contribute to the home's welcoming atmosphere, while tasteful renovations have enhanced everyday comfort and functionality.

Space To Gather

The ground floor has been designed with both family life and entertaining in mind, offering flowing reception spaces that connect naturally while still retaining definition and character. The impressive living room provides a superb central gathering space, generous in scale yet wonderfully cosy, ideal for both relaxed evenings and larger social occasions.

A striking dining room offers the perfect setting for entertaining, with its long dining arrangement, natural light and understated contemporary styling creating an inviting environment for hosting family and friends. Nearby, the updated kitchen blends practicality with timeless finishes, complementing the character of the house while offering modern convenience.





KEY FEATURES

The entrance hall itself creates an immediate sense of occasion, enhanced further by a charming bar area which adds personality and a sociable touch to the home. A useful laundry room and beautifully updated ground floor shower room further support modern family living.

Bedrooms Full Of Character

Arranged over the upper floors, the bedroom accommodation is one of the property's standout features. All five bedrooms are notably generous in size, each with its own individual charm and outlook across the surrounding gardens or neighbouring countryside. The principal bedroom is particularly impressive, offering an elegant retreat with dual aspect windows, exposed beams and a calm, understated aesthetic. Several bedrooms retain original fireplaces and character flooring, while the upper floor rooms feature vaulted ceilings and exposed structural timbers that add warmth and architectural interest.

The bathrooms have been stylishly modernised with high quality fittings and carefully considered finishes, complementing the age and character of the farmhouse while providing the comforts expected for contemporary living.

Gardens & Outdoor Living

Outside, the property continues to impress. The wraparound gardens create a wonderful sense of privacy and space, ideal for families, keen gardeners or those simply seeking a quieter pace of life. Expanses of lawn are interspersed with mature trees and established planting, while vegetable plots and two greenhouses offer excellent opportunities for home growing and sustainable living. The substantial driveway provides extensive parking alongside a single garage and useful outbuildings totalling approximately 300 sq ft, offering flexibility for storage, hobbies or workshop use. With the front elevation enjoying a south-facing orientation and open field views beyond, the outdoor setting feels both peaceful and connected to the surrounding countryside.





























INFORMATION



On The Doorstep

Corton remains one of the area's most desirable coastal villages, prized for its blend of countryside surroundings and proximity to the sea. Just moments away, Corton beach offers wide open sands, cliff-top walks and beautiful coastal scenery, while nearby pubs, cafés and local shops provide day-to-day convenience within a relaxed village environment. For broader amenities, Lowestoft is only a short drive away, offering supermarkets, independent restaurants, leisure facilities, schools and retail parks, while nearby Oulton Broad provides waterside dining, boating activities and access to the Broads National Park. The surrounding coastline also offers easy access to places such as Southwold, Gorleston and Great Yarmouth, making this an excellent base for enjoying both Suffolk and Norfolk coastal living.

How Far Is It To?

The location places you perfectly for both coastal escapes and practical commuting. Corton beach is just moments from the property, ideal for morning walks along the shoreline or evenings watching the sunset over the sea. Oulton Broad, known for its boating scene and lively waterside atmosphere, is easily accessible and provides a fantastic selection of cafés, pubs and leisure activities. Lowestoft town centre offers wider shopping, schools and rail services, while Great Yarmouth provides additional entertainment, restaurants and seaside attractions. For those travelling further afield, nearby rail links at Oulton Broad North and Somerleyton connect into Norwich and beyond, while the A47 provides straightforward road access across the region.

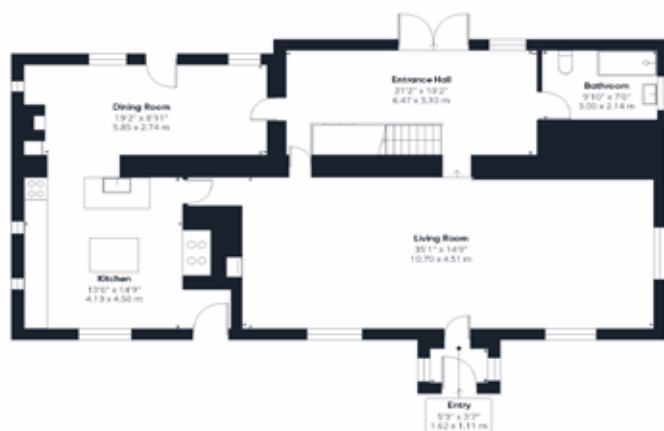
Directions - Please Scan QR Code Below

From Beccles, exit Via George Westwood Way, turning left onto it before continuing to the A146. Follow the A146 through several roundabouts, staying on the same road toward Carlton Colville. Continue along the A146 into Lowestoft via Beccles Road, Saltwater Way, and Normanston Drive. At the next roundabout, join Peto Way/A12, then continue onto Millennium Way/A12 through two roundabouts. Finally, bear slightly right toward Yarmouth Road/A47 and then slightly left onto Yarmouth Road/A47, continuing straight along the A47/Yarmouth Road for a few more moments and the driveway will be then on your left with the property straight in front of you.

Services, District Council and Freehold Tenure

Oil Central Heating, Mains Water, Drainage via Treatment Plant
Ultra Fast Broadband Available - please see www.openreach.com/fibre-checker
Mobile Phone Reception - varies depending on network provider
Please see www.checker.ofcom.org.uk
East Suffolk Council - Band E





Ground Floor The Farmhouse



First Floor The Farmhouse



Second Floor The Farmhouse



Garage



Building 3

Approximate total area¹⁾
 3358 ft²
 312 m²
 Reduced headroom
 103 ft²
 9.6 m²

(1) Excluding balconies and terraces

Reduced headroom
 ----- Below 5 ft/1.5 m

Calculations reference the RICS IPMS 3C standard. Measurements are approximate and not to scale. This floor plan is intended for illustration only.

GIRAFFE360

This property requires an Energy Performance Certificate, which is in the process of being done

Agents notes: All measurements are approximate and for general guidance only and whilst every attempt has been made to ensure accuracy, they must not be relied on. The fixtures, fittings and appliances referred to have not been tested and therefore no guarantee can be given that they are in working order. Internal photographs are reproduced for general information and it must not be inferred that any item shown is included with the property. For a free valuation, contact the numbers listed on the brochure.





FINE & COUNTRY

Fine & Country is a global network of estate agencies specialising in the marketing, sale and rental of luxury residential property. With offices in the UK, Australia, Egypt, France, Hungary, Italy, Malta, Namibia, Portugal, South Africa, Spain, The Channel Islands, UAE, USA and West Africa we combine the widespread exposure of the international marketplace with the local expertise and knowledge of carefully selected independent property professionals.

Fine & Country appreciates the most exclusive properties require a more compelling, sophisticated and intelligent presentation - leading to a common, yet uniquely exercised and successful strategy emphasising the lifestyle qualities of the property.

This unique approach to luxury homes marketing delivers high quality, intelligent and creative concepts for property promotion combined with the latest technology and marketing techniques.

We understand moving home is one of the most important decisions you make; your home is both a financial and emotional investment. With Fine & Country you benefit from the local knowledge, experience, expertise and contacts of a well trained, educated and courteous team of professionals, working to make the sale or purchase of your property as stress free as possible.

THE FINE & COUNTRY
FOUNDATION

Fine & Country Foundation, charity no. 1160989

Striving to relieve homelessness.

To find out more please visit fineandcountry.com/uk/foundation



follow Fine & Country Beccles on



Fine & Country Waveney
14 Blyburgate, Beccles, Suffolk, NR34 9TB
01502 533383 | beccles@fineandcountry.com

Scan the QR Code to find this property on the
Fine & Country website.

