



Chambers Street, SE16

£500,000

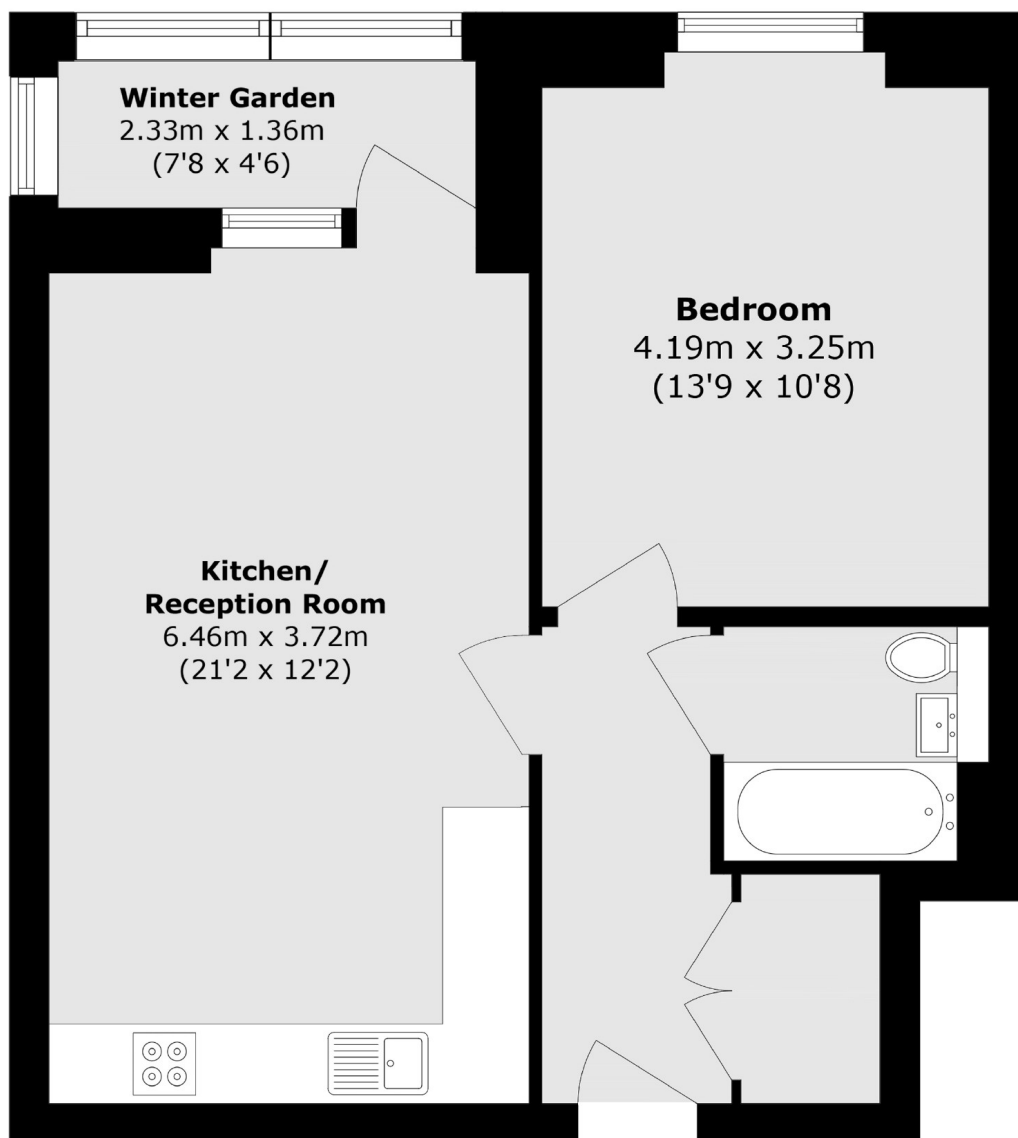
Situated moments from the river, one double bedroom flat is in immaculate condition and has a large open plan kitchen/ living space, modern bathroom, ample storage and private balcony with direct views of The Thames.

Hartley House is located only 0.2 miles from Bermondsey station and 0.5 miles from London Bridge station and is surrounded by shops, cafés, food markets, delis and restaurants and is moments from the River Thames.

Features

- River Views
- One Double Bedroom
- Fantastic Location
- Excellent Condition
- Private Balcony

Chambers Street, London, SE16



Total area (approx.): 54.7 sq. m (588.7 sq. ft)