



## Doughty Street, WC1N

£5,000 Per calendar month

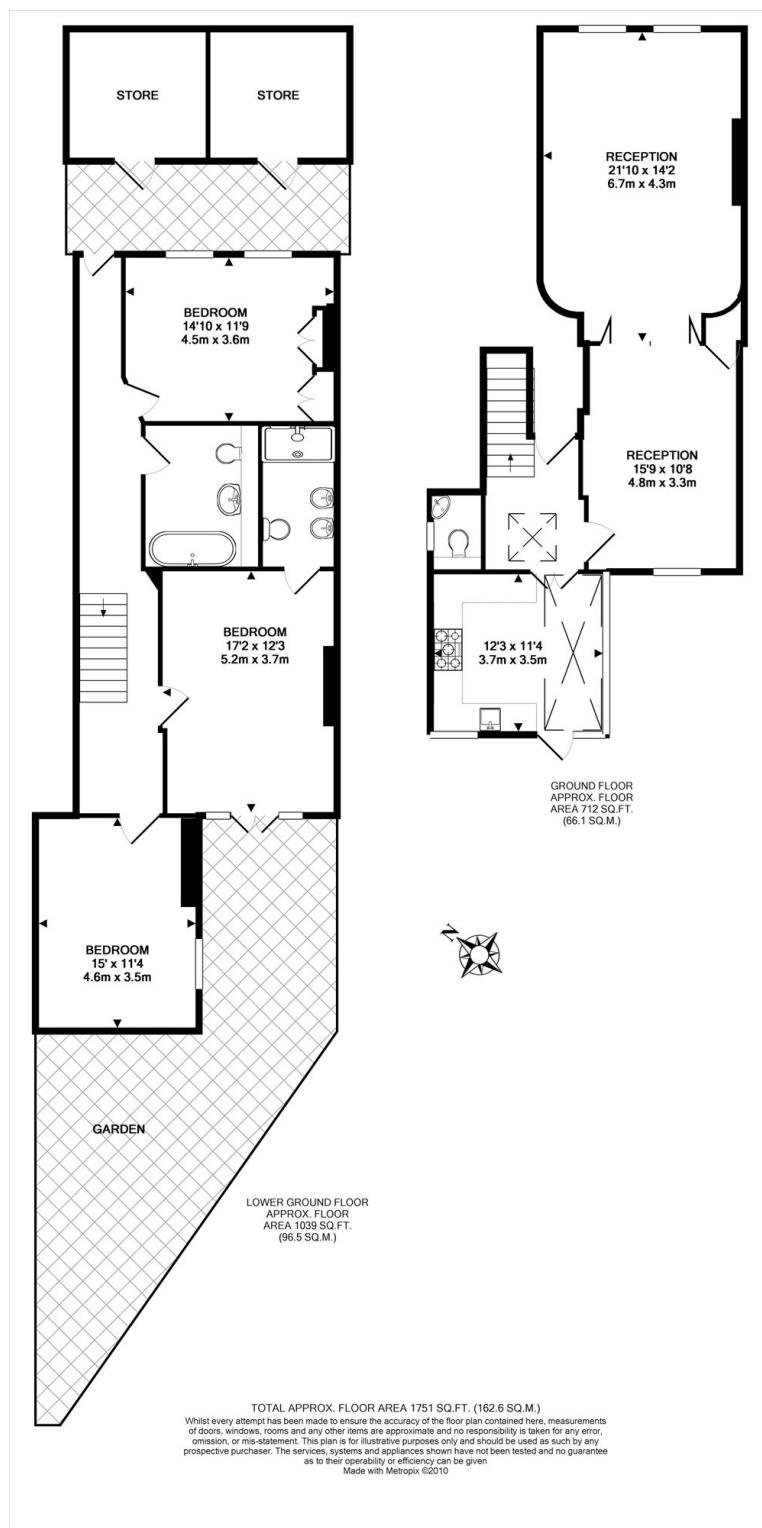
A modern and exceptionally spacious three double bedroom duplex with private garden on the raised ground and lower ground floor of this stunning Grade II listed property in the heart of Bloomsbury.

Doughty Street is one of the most sought after addresses in Bloomsbury and is ideally positioned just a few yards away from the many local shops and cafés of Lambs Conduit Street. Russell Square Underground station is within half of mile of the property.

### Features

- Three Bedroom
- Two Bathrooms
- Original Features
- Double Reception
- Private Garden
- Wood Floor Throughout

# Doughty Street, London, WC1N



## Dexters

Bloomsbury  
55-56 Coram Street  
London  
WC1N 1HB  
Lettings  
020 7833 4488

Energy Rating: D. We aim to make our particulars both accurate and reliable. However they are not guaranteed; nor do they form part of an offer or contract. If you require clarification on any points then please contact us, especially if you're traveling some distance to view. Please note that appliances and heating systems have not been tested and therefore no warranties can be given as to their good working order.

 **RICS** | Regulated  
Estate Agent  
and Letting Agent

dexters.co.uk