



Hogarth Lane, W4

£525,000

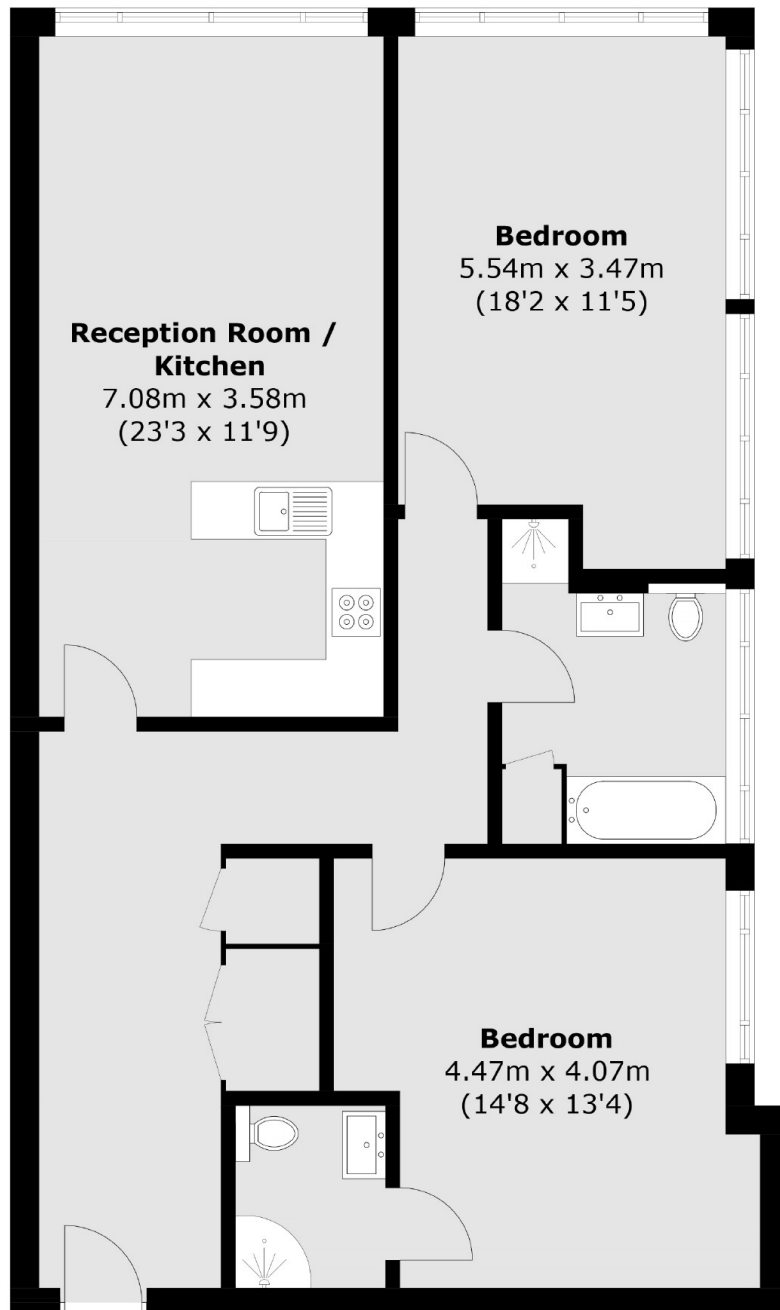
A well-presented two bedroom, two bathroom apartment that has been finished to a high standard throughout. With open plan kitchen/living area, allocated parking and no onward chain,

Hogarth Lane is walking distance of Chiswick High Road's shops, cafes and restaurants. Transport links include Turnham Green and Chiswick Park stations, local bus routes and the A4/M4 for routes in and out of London

Features

- Two Double Bedrooms
- Two Bathrooms
- Modern Build
- Off-Street Parking
- No Onward Chain
- Close To Transport

Hogarth Lane,
London, W4



Total area (approx.): 93.5 sq. m (1,006 sq. ft)

Dexters

Chiswick
388 Chiswick High Road
London
W4 5TF
Sales
020 8995 4321

Energy Rating: C. We aim to make our particulars both accurate and reliable. However they are not guaranteed; nor do they form part of an offer or contract. If you require clarification on any points then please contact us, especially if you're traveling some distance to view. Please note that appliances and heating systems have not been tested and therefore no warranties can be given as to their good working order.

 **RICS** | Regulated
Estate Agent
and Letting Agent

[dexters.co.uk](https://www.dexters.co.uk)