

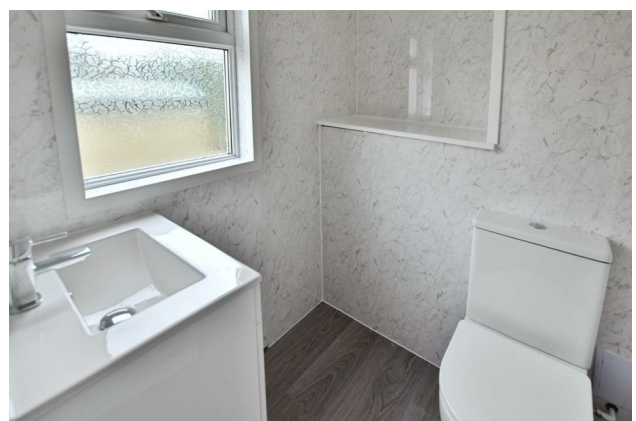
HUNTERS®

HERE TO GET *you* THERE

90 Newbridge Road, Bristol, BS4 4DL

£1,750 Per Month

Property Images



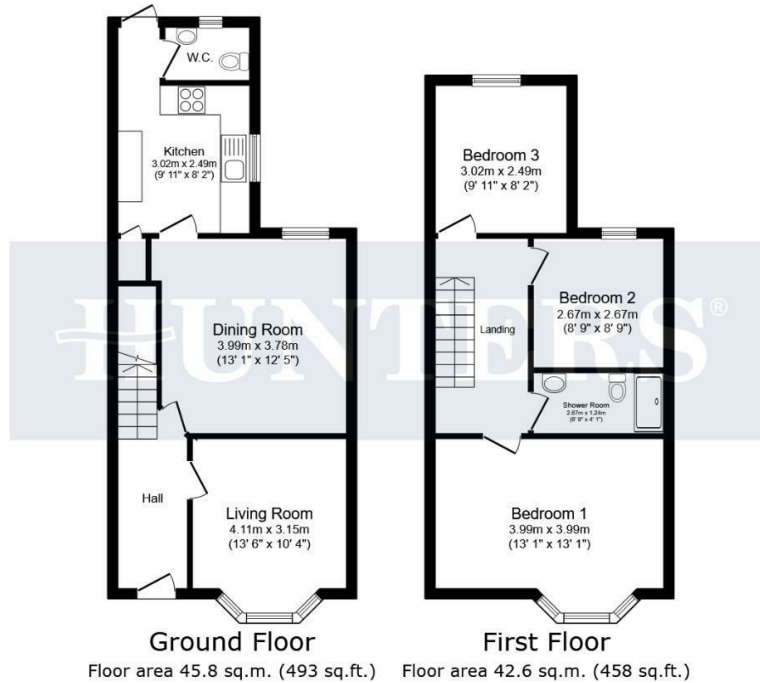
HUNTERS[®]

HERE TO GET *you* THERE

Property Images



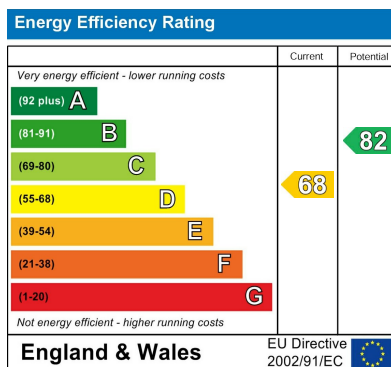
Floorplan



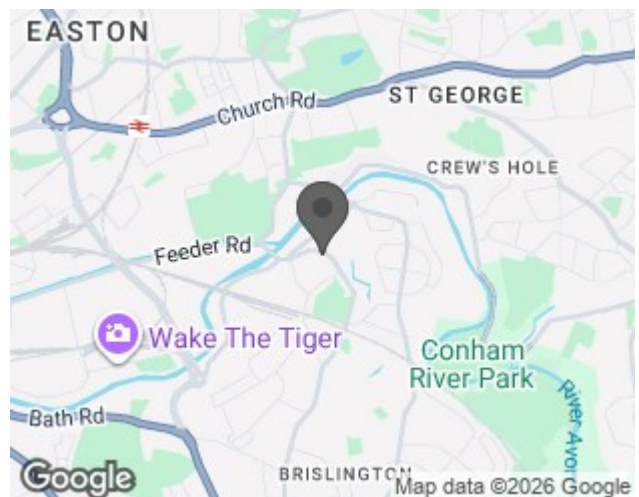
Total floor area: 88.4 sq.m. (951 sq.ft.)

This floor plan is for illustrative purposes only. It is not drawn to scale. Any measurements, floor areas (including any total floor area), openings and orientations are approximate. No details are guaranteed, they cannot be relied upon for any purpose and do not form any part of any agreement. No liability is taken for any error, omission or misstatement. A party must rely upon its own inspection(s). Powered by www.Propertybox.io

EPC



Map



Details

Type: House - Mid Terrace Beds: 3 Bathrooms: 1 Receptions: 2 Tenure:

Features