



Dartford Avenue, Eccles

Manchester



In Excess of £280,000

Dartford Avenue

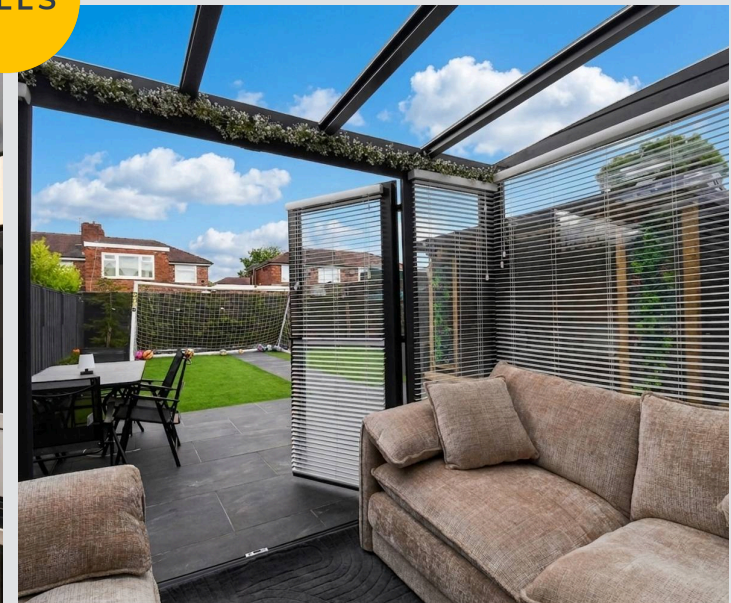
Eccles, Manchester

Immaculate three bed semi in Winton Village with double extension, modern kitchen, open plan living, stylish garden, off-road parking, near schools, amenities, and Monton Village.

Council Tax band: B

Tenure: Leasehold

- Beautifully Presented Semi Detached Property with a Double Story Extension on a cul de Sac Within Winton Village
- Open Plan Lounge & Dining Space with French Doors opening on to the Conservatory
- Stunning Newly Fitted Kitchen with a Range of Wall and Base Units
- Three Generous Double Bedrooms
- Stunning Three Piece Bathroom Suite
- Off Road Parking to the Front
- Low Maintenance Front and Rear Gardens with Tiled Patio, Artificial Lawn and Wooden Gazebo to the Rear
- Within Catchment for Sought After Schooling
- Surrounded by Excellent Amenities, Transport Links and a Short Walk to Monton Village



Porch

9' 0" x 3' 8" (2.74m x 1.12m)

Entrance Hallway

Lounge

10' 10" x 23' 8" (3.29m x 7.21m)

Kitchen

7' 3" x 14' 4" (2.21m x 4.38m)

Conservatory

10' 6" x 7' 8" (3.20m x 2.34m)

Landing

Bedroom One

12' 1" x 10' 9" (3.69m x 3.28m)

Bedroom Two

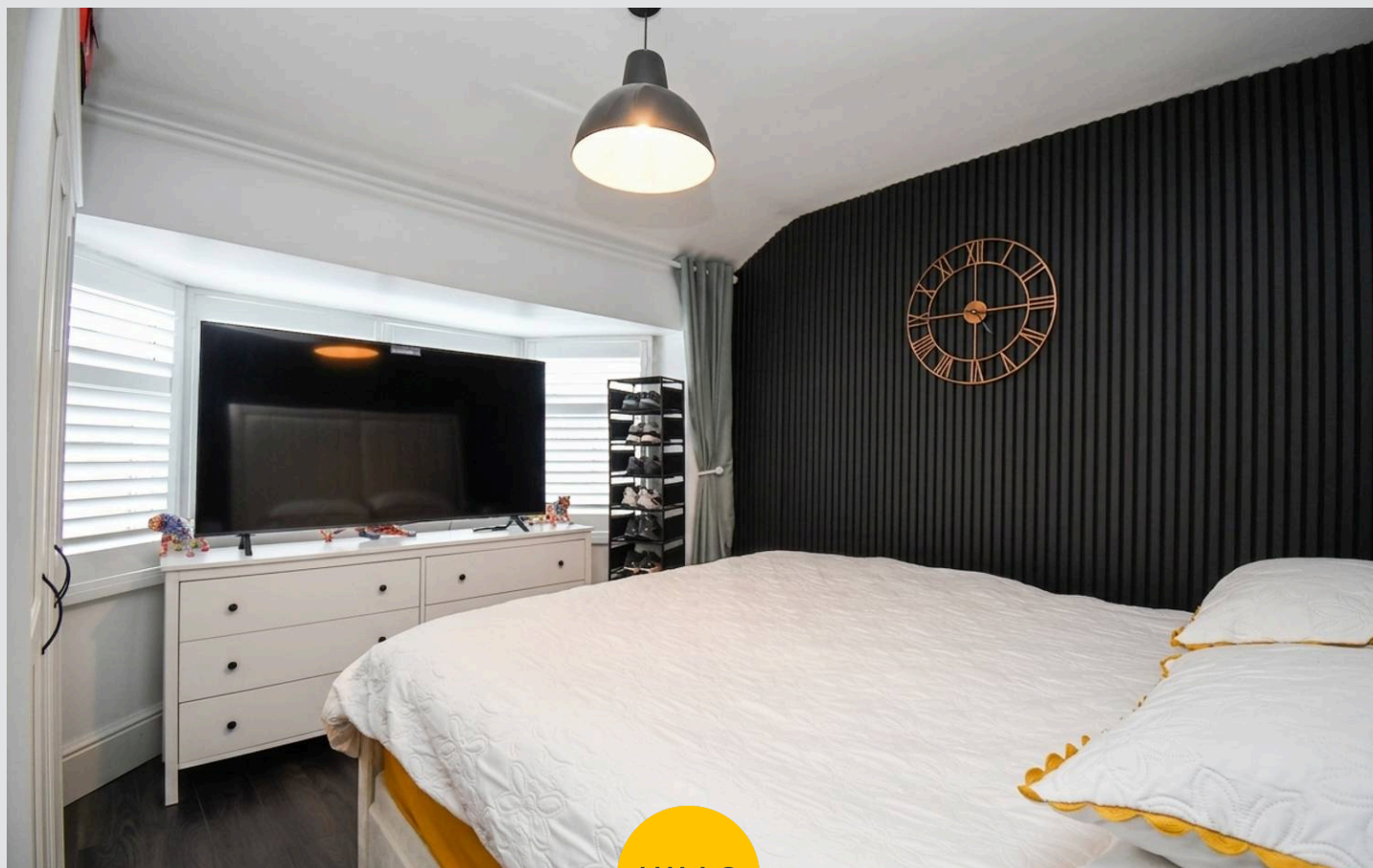
10' 10" x 8' 0" (3.30m x 2.43m)

Bedroom Three

14' 6" x 7' 9" (4.41m x 2.36m)

Bathroom

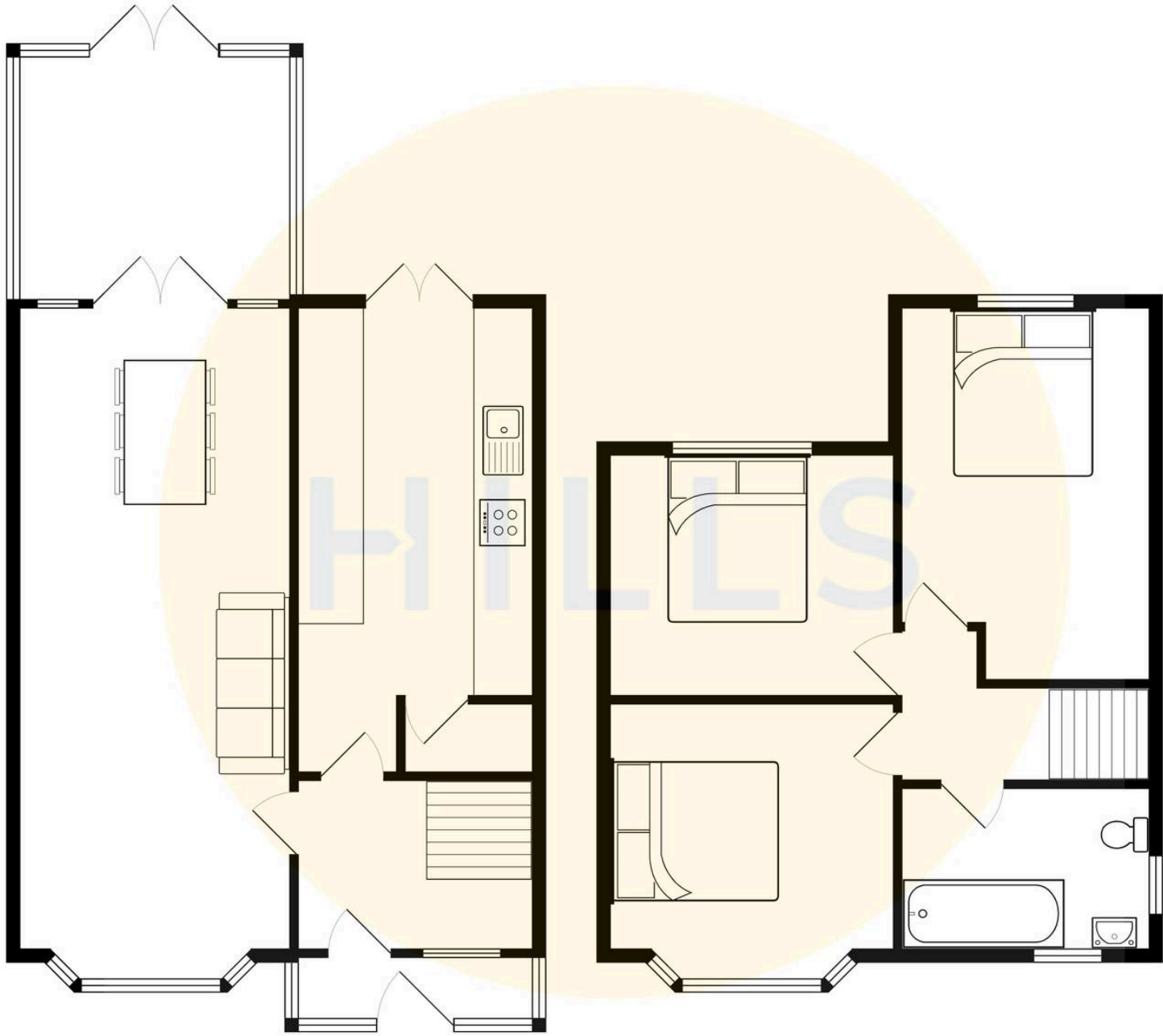
8' 1" x 7' 11" (2.47m x 2.41m)





HILLS







Hills | Salfords Estate Agent

Hills Residential, Sentinel House Albert Street – M30 0SS

0161 707 4900

sales@hills.agency

www.hills.agency/



By law, we are required to conduct anti-money laundering checks on all potential buyers and sellers. In line with HMRC guidelines, our trusted partner, Coadjute, will securely manage these checks on our behalf. A non-refundable fee of £45 + VAT per person will apply, and Coadjute will handle the payment. Once an offer is accepted, Coadjute will send a secure link for you to complete the biometric checks. These checks must be completed before we can send the memorandum of sale to all parties. PLEASE NOTE: The Agent has not tested any equipment, fixtures, fittings or services so cannot verify that they are in working order or fit for the purpose. References to the properties tenure are based on information supplied by the seller. You are advised to check the availability of this property before travelling any distance to view. Every effort has been made to ensure these particulars are correct and not misleading but their accuracy is not guaranteed nor do they form part of any contract.