



Price

£475,000

Freehold

4x  2x  3x 

Timberbank, Vigo, Kent,
DA13

Wards
Helping you move forwards



Main features

- Impressive side extension, creating enhanced living space
- Bright conservatory, offering year-round enjoyment
- Garage en bloc
- Stylish open-plan living, ideal for modern lifestyles
- Fully powered summerhouse, perfect as a home office or studio

Accommodation

GROUND FLOOR

- Porch: 6'0 x 4'0 (1.83m x 1.22m)
- Entrance Hall
- Lounge: 17'10 x 11'2 (5.44m x 3.41m)
- Study: 12'4 x 11'2 (3.76m x 3.41m)
- Kitchen: 9'2 x 8'5 (2.80m x 2.57m)
- Dining Area: 16'0 x 10'0 (4.88m x 3.05m)
- Conservatory: 19'11 maximum x 19'2 maximum (6.07m x 5.85m)

FIRST FLOOR

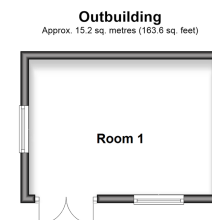
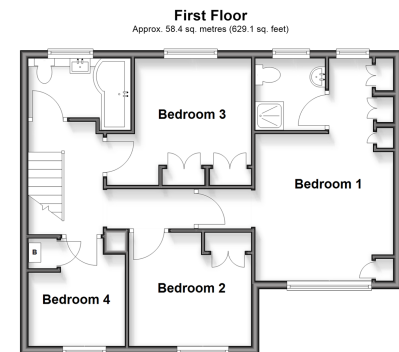
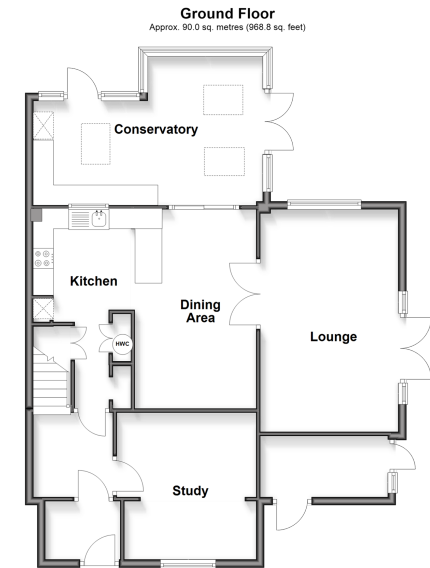
- Landing
- Bedroom 1: 17'9 x 11'1 (5.41m x 3.38m)
- En-Suite Shower Room: 5'7 x 5'5 (1.70m x 1.65m)
- Bedroom 2: 12'0 x 10'2 (3.66m x 3.10m)
- Bedroom 3: 10'2 x 9'5 (3.10m x 2.87m)
- Bedroom 4: 7'8 x 6'6 (2.34m x 1.98m)
- Bathroom: 8'2 x 5'6 (2.49m x 1.68m)

OUTSIDE

- Garage en bloc
- Front and Rear Gardens

OUTBUILDING

- Room 1



Unable to display material information. Please check with the branch for material information details for this property

