



Khyber Road
London, SW11

CHESTERTONS





A three bedroom, two bathroom Victorian house with generous entertaining space and private garden, located within moments of Battersea Park and Clapham Junction.

The well-balanced accommodation of 1031 Sq Ft is arranged over two floors and presented in good order throughout.

In the ground floor, there is a spacious double reception with bay windows and wooden flooring, in the back there is a generous size kitchen which opens up to a private patio.

Upstairs there are three bedrooms and a large 3 piece bathroom.

The property is ideally located within a ten minute walk of the amenities and Mainline station at Clapham Junction. The large green spaces of Battersea Park is around the corner as well as Battersea Power Station.

- Three Double Bedroom House
- Double Reception Room
- Private Rear Garden
- Short Walk to Clapham Junction Station

£3,250 pcm

Additional tenant charges apply (fees apply to non-AST tenancies only)

Tenancy Agreement Fee: £300

References per Tenant/Guarantor: £60

Inventory check (approx. £100 – £250 inc. VAT)

chestertons.co.uk/property-to-rent/applicable-fees



Minimum Term: 12 months
Deposit Required: £3,750.00
Local Authority: London Borough of Wandsworth
Council Tax Band: F
EPC Rating: C
Unfurnished

Chestertons Battersea Park & Nine Elms Lettings

62-64 Battersea Bridge Road
 London
 SW11 3AG

batterseapark@chestertons.co.uk

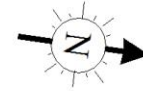
02030408269

chestertons.co.uk

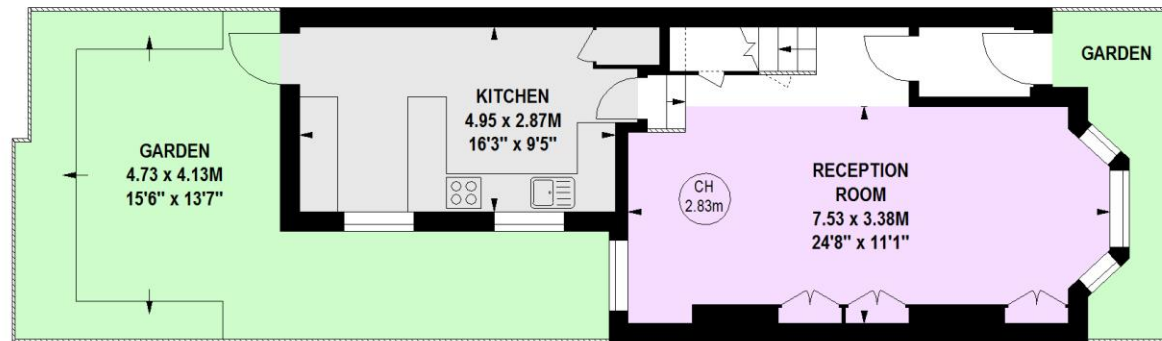
Khyber Road , SW11

Approximate gross internal area

95.78 sq m / 1031 sq ft



Key :
CH - Ceiling Height



The floor plan is not to scale and measurements and areas shown are approximate and therefore should be used for illustrative purposes only. The plan has been prepared in accordance with the RICS code of Measuring Practice and whilst we have confidence in the information produced, it must not be relied on. If there is any aspect of particular importance, you should carry out or commission your own inspection of the property. Copyright of FeaturePRO.

