



Mornington Crescent

Camden Town, NW1

£5,950 per month
(£1,373.08 per week)

SHORT LET - A spacious and well-presented four double bedroom apartment offering bright and airy accommodation throughout, ideally located in the heart of Camden.

CHESTERTONS



Mornington Crescent

Camden Town, NW1

- Four double bedrooms
- Separate reception room
- Two bathrooms
- Spacious fitted kitchen
- Bright and airy throughout
- Excellent Camden location close to transport links and amenities
- INCLUSIVE OF ALL BILLS

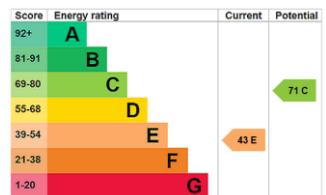


SHORT LET - A spacious and well-presented four double bedroom apartment offering bright and airy accommodation throughout, ideally located in the heart of Camden.

The property comprises four generous double bedrooms, a separate reception room, a spacious fitted kitchen and two bathrooms, providing excellent living space for sharers. Large windows and well-proportioned rooms create a light-filled and comfortable home.

Ideally positioned close to Mornington Crescent station, the property is perfectly placed for the many cafés, restaurants and amenities of Camden Town. Excellent transport links are also available via

Minimum Term: 1 months
Deposit Required: £2,746.15
Local Authority: Camden
Council Tax Band:
EPC Rating: E
Furnished



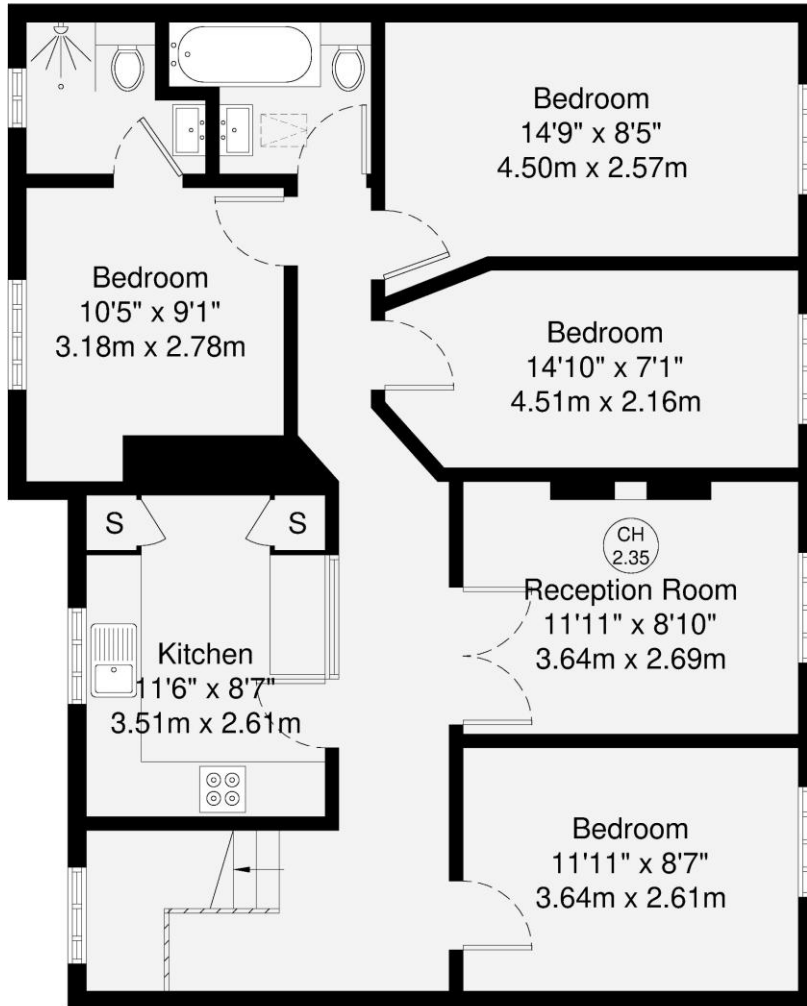
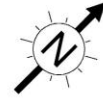
Chestertons Camden & Primrose Hill Lettings

99-101 Parkway
 London
 NW1 7PP
 camdentownlettingsusers@chestertons.co.uk
 02072673574
 chestertons.co.uk

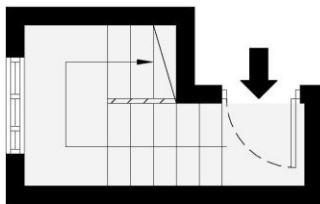
Additional tenant charges apply (fees apply to non-AST tenancies only)
 Tenancy Agreement Fee: £300
 References per Tenant/Guarantor: £60
 Inventory check (approx. £100 – £250 inc. VAT)
 chestertons.co.uk/property-to-rent/applicable-fees

En-Suite 6'4" x 5'4"
1.94m x 1.63m

Bathroom 5'4" x 5'4"
1.63m x 1.63m



Fourth Floor



Third Floor

GROSS INTERNAL AREA (GIA)
The footprint of the property
89.2 sq m / 960 sq ft

TOTAL STORAGE SPACE
Storage and wardrobe total area
0.7 sq m / 7 sq ft

EXTERNAL FEATURES
Garden, Balcony, Terrace, Verandah etc.
0.0 sq m / 0.0 sq ft

RESTRICTED HEAD HEIGHT
Limited use area under 1.5m
0.0 sq m / 0.0 sq ft

Disclaimer : Floorplan measurements are approximate and are for illustrative purposes only. While we do not doubt the floorplan accuracy and completeness, you or your advisors should conduct a careful, independent investigation of the property in respect of monetary valuation.

Maison VUE

