



Hurfords

Hansel Close, Peterborough Freehold Offers in Excess of £350,000

Key Features



- Three Storey Family Home
- Single Garage With Off Road Parking
- Four Bedrooms
- Two Reception Rooms
- Close To Open Park Areas

A well maintained modern three story, four bedroom home complete with two bathrooms, situated in a cul de sac within the ever-popular Sugar Way development.

The development is located south of the city centre and is ideally located in school catchment areas for Nene Park Academy, Ormiston Bushfield Academy, and the Nene Valley Primary School.

The city's vibrant centre is located a short distance away with its road and rail links to London, and the A1.

A short drive away is the popular Ferry Meadows Country Park. The area is also well served by several local bus routes with frequent services into the city centre.



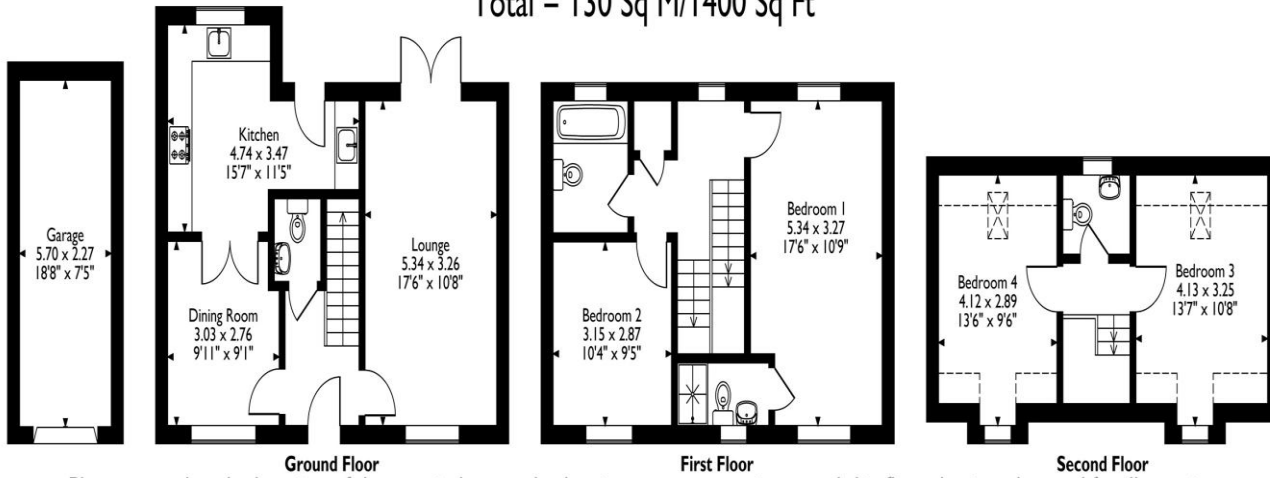
There are options for sports and leisure activities in and around the Sugar Way location.

There are several open park areas situated within Sugar Way, which are very popular for outdoor and sports activities such as walking jogging cycling and picnic in.

An ideal family home, just awaiting its new owners.



Hansel Close, Peterborough
Approximate Gross Internal Area
Main House = 117 Sq M/1260 Sq Ft
Garage = 13 Sq M/140 Sq Ft
Total = 130 Sq M/1400 Sq Ft



Please note that the location of doors, windows and other items are approximate and this floorplan is to be used for illustrative purposes only. Unauthorized reproduction is prohibited.

Selling your property?

Contact us to arrange a FREE home valuation.

 01733 380956

 Unit 5, The Barns Milton Lane, Castor, PETERBOROUGH, Cambridgeshire , PE5 7DH

 info@hurfords.co.uk

 www.hurfords.co.uk



 SCAN ME



Hurfords is a trading name of Sharman Quinney Holdings Limited which is registered in England and Wales under company number 4174227, Registered Office is Cumbria House, 16-20 Hockliffe Street, Leighton Buzzard, Bedfordshire, LU7 1GN. VAT Registration Number is 500 2481 05.

1: These particulars do not constitute part or all of an offer or contract. 2: The measurements indicated are supplied for guidance only and as such must be considered incorrect. 3: Potential buyers are advised to recheck the measurements before committing to any expense. 4: Hurfords has not tested any apparatus, equipment, fixtures, fittings or services and it is the buyers interests to check the working condition of any appliances. 5: Hurfords has not sought to verify the legal title of the property and buyers must obtain verification from their legal representative. 6: Intending purchasers will be asked to produce identification documentation at a later stage and we would ask your co-operation in order that there will be no delay in agreeing the sale. Ref: HUC104060 - 0006

