



Penn Street

Hoxton, N1

Offers in Excess of £1,000,000

A design led three bedroom, two bathroom penthouse apartment set on and overlooking the greenery of Shoreditch Park which enjoys outstanding Cityscape views.



Penn Street

Hoxton, N1

- Three bedrooms
- Two bathrooms
- Penthouse apartment
- Large balcony
- Set on and overlooking the greenery of Shoreditch Park
- Outstanding Cityscape views



A design led three bedroom, two bathroom penthouse apartment set on and overlooking the greenery of Shoreditch Park which enjoys outstanding Cityscape views. Accommodation is well balanced with an efficient layout and comprises; a large entrance hallway, leading to three generous double bedrooms all set next to one another, two of which feature built in wardrobes, with the principal also featuring an en-suite shower room. The third bedroom is currently utilised as study space and provides an access point to the large balcony, which enjoys jaw dropping City views, with the greenery of Shoreditch Park in the foreground. The living space is semi open plan with the kitchen and set at the end of the apartment and is light filled courtesy of the triple aspect, and provides additional balcony access. Penn Street is a coveted is conveniently located for access to Hoxton and Shoreditch, with an array of trendy bars, restaurants, galleries and boutique shops. Old Street Underground (Northern Line), Essex Road (National Rail) and Highbury & Islington station (National Rail & Victoria Line) are the closest stations. The bus routes of Southgate Road and New North Road provide good links to the City.

Tenure: Leasehold

Service Charge: £4250

Ground Rent: £245

Local Authority: London Borough Of Hackney (Council Tax)

Council Tax Band: E

Chestertons Islington Sales

327-329 Upper Street

Islington

London

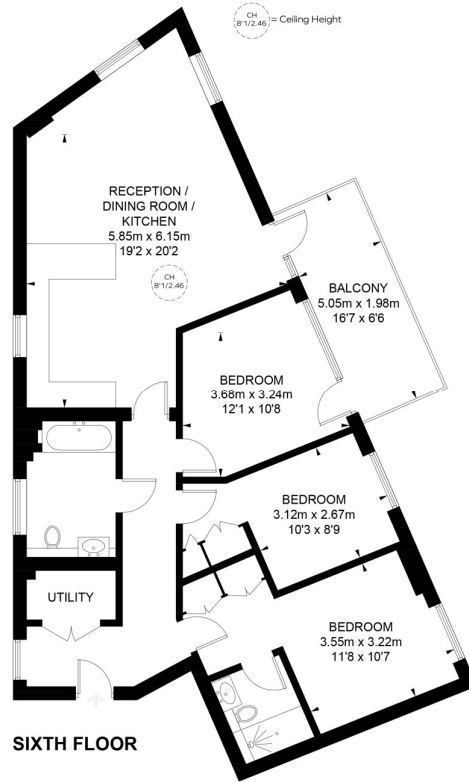
N1 2XQ

islington@chestertons.co.uk

020 7359 9777

chestertons.co.uk

Penn Street, N1



Approximate Gross Internal Area
1057 sq ft / 98.2 sq m

This plan is for layout guidance only. Not drawn to scale unless stated. Windows and door openings are approximate. Whilst every care is taken in the preparation of this plan, please check all dimensions, shapes and compass bearings before making any decisions reliant upon them. (ID1131425)

