



3 Beeston Close, Watford  
£485,000





## 3 Beeston Close

Watford

PURPOSE BUILT 'NO FINES' THREE BEDROOM SEMI DETACHED FAMILY HOME OFFERED TO THE MARKET WITH NO UPPER CHAIN.

Presenting this well maintained three bedroom semi detached house, offered with no upper chain and ideally situated in a quiet cul-de-sac within walking distance of Carpenders Park Station. Recently redecorated throughout, this property is ready for immediate occupation and provides an excellent opportunity for families or professionals seeking a comfortable and conveniently located home.

Council Tax band: D

Tenure: Freehold

EPC Energy Efficiency Rating: D

- NO UPPER CHAIN
- THREE GOOD SIZED BEDROOMS
- RECENTLY DECORATED THROUGHOUT
- SOLAR PANELS & BATTERY
- DOUBLE GLAZING & GAS CENTRAL HEATING
- QUIET CUL-DE-SAC LOCATION
- LARGE ACCESSIBLE LOFT STORAGE
- WALKING DISTANCE TO CARPENDERS PARK STATION
- COUNCIL TAX BAND - D
- EPC RATING - D

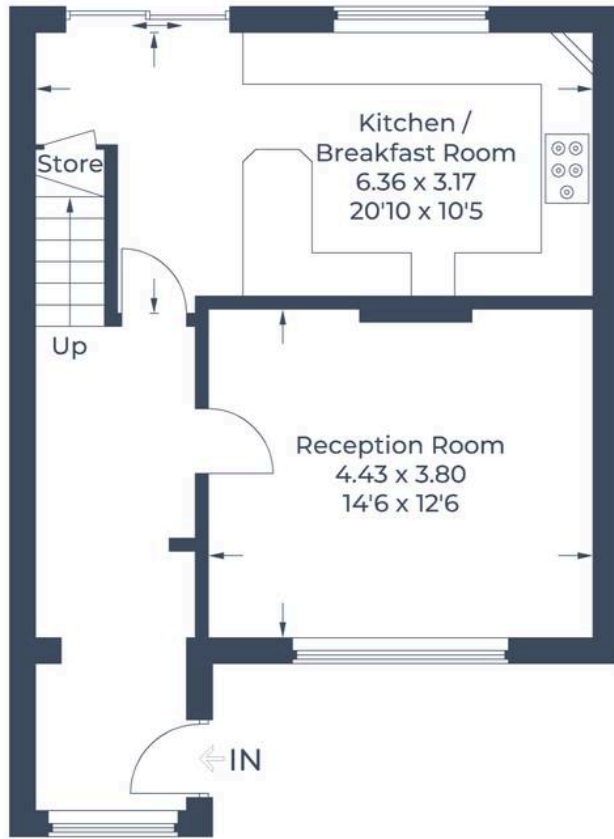








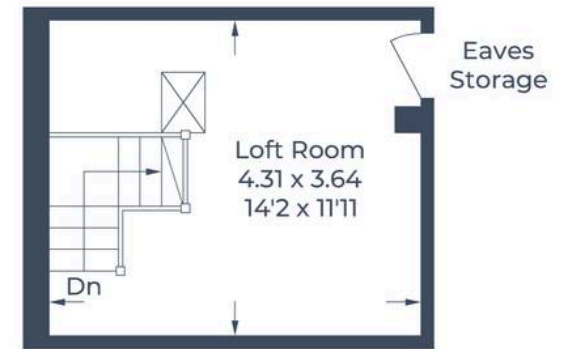
Approximate Gross Internal Area  
 Ground Floor = 49.1 sq m / 528 sq ft  
 First Floor = 45.1 sq m / 485 sq ft  
 Second Floor = 15.7 sq m / 169 sq ft  
 Total = 109.9 sq m / 1,182 sq ft



**Ground Floor**



**First Floor**



**Second Floor**

Illustration for identification purposes only,  
 measurements are approximate, not to scale.  
 © CJ Property Marketing Produced for Fairfield Estates





## Fairfield – Oxhey

1 Station Approach, Watford – WD19 7DT

020 8428 0540 • [rob@fairfieldstates.co.uk](mailto:rob@fairfieldstates.co.uk) • [fairfieldstates.co.uk/](http://fairfieldstates.co.uk/)

We have prepared these particulars as a general guide of the property and they are not intended to constitute part of an offer or contract. We have not carried out a detailed survey of the property and we have not tested any apparatus, fixtures, fittings, or services. All measurements and floorplans are approximate, and photographs are for guidance only. These should not be relied upon for the purchase of carpets or any other fixtures or fittings. Lease details, service