



OFFERTON ROAD, SW4

£750,000

South-west facing garden
Quiet and leafy location
Own private entrance
Raised ground floor
Share of freehold
Energy rating: c

@marshandparsons
marshandparsons.co.uk

MARSH &
PARSONS

ABOUT THE PROPERTY

A light and charming garden flat with two bedrooms, two bathrooms and its own private entrance, ideally positioned on a prime residential street in the heart of Clapham Old Town.

Sitting peacefully just off Grafton Square, this wonderful property has large windows, all of which look onto the garden. It also has a huge amount of storage space. The flat comprises a private entrance leading into a hallway, off which are the two double bedrooms, a family bathroom and an ensuite shower bathroom. Further down the hallway is the galley kitchen and reception room, which opens directly onto the private garden, making it ideal for entertaining and everyday living.

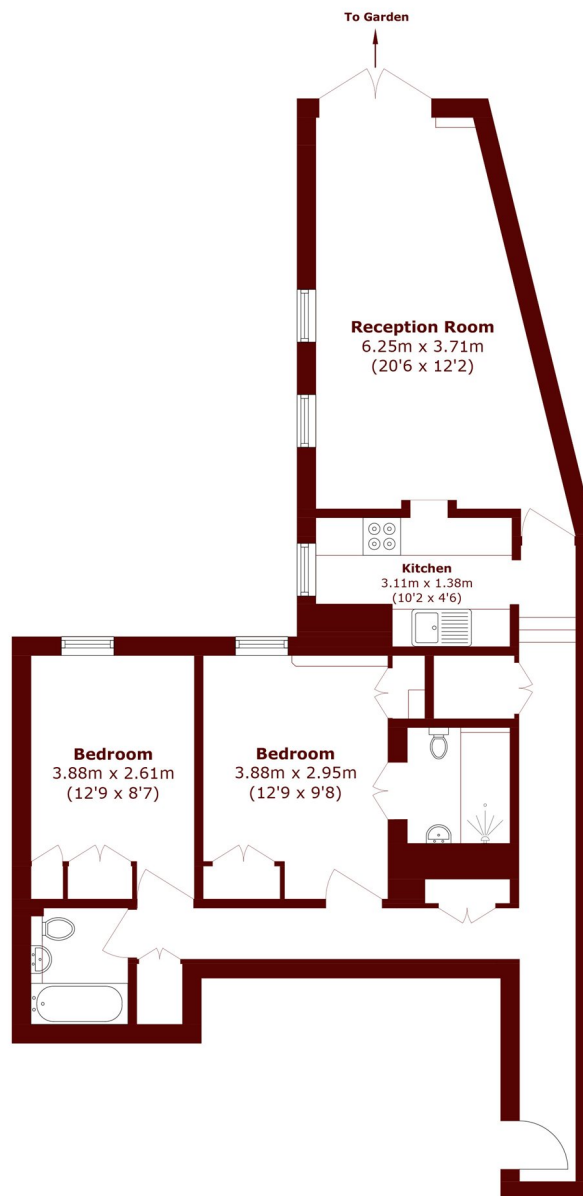








STEP INSIDE OFFERTON ROAD



Total area (approx.): 78.0 sq. m (839.5 sq. ft)

Clapham
020 7501 3666

Energy Rating: C We aim to make our particulars both accurate and reliable. However, they are not guaranteed; nor do they form part of an offer or contract. If you require clarification on any points then please contact us, especially if you're traveling some distance to view. Please note that appliances and heating systems have not been tested and therefore no warranties can be given as to their good working order

**MARSH &
PARSONS**