



Lighterage Court

High Street, TW8

Asking Price £875,000

A distinctive Penthouse apartment measuring circa 1308 sq. ft. with a fabulous roof terrace with enviable views. Allocated parking space. No onward chain.

CHESTERTONS



Lighterage Court

High Street, TW8

- Circa 1308 sq. ft Penthouse
- Allocated, covered parking space
- Spectacular South facing Roof Terrace
- No onward chain
- Three Bedroom
- One Reception
- Three Bathroom
- Lift



Luxurious modern Penthouse apartment set on the River Thames, with enviable views over the river and towards the city.

This spacious property, circa 1308 sq. ft, has been built to exacting standards benefitting from a 21 ft x 9 ft (approximate) roof terrace ideal for a soiree.

Allocated, gated underground parking.

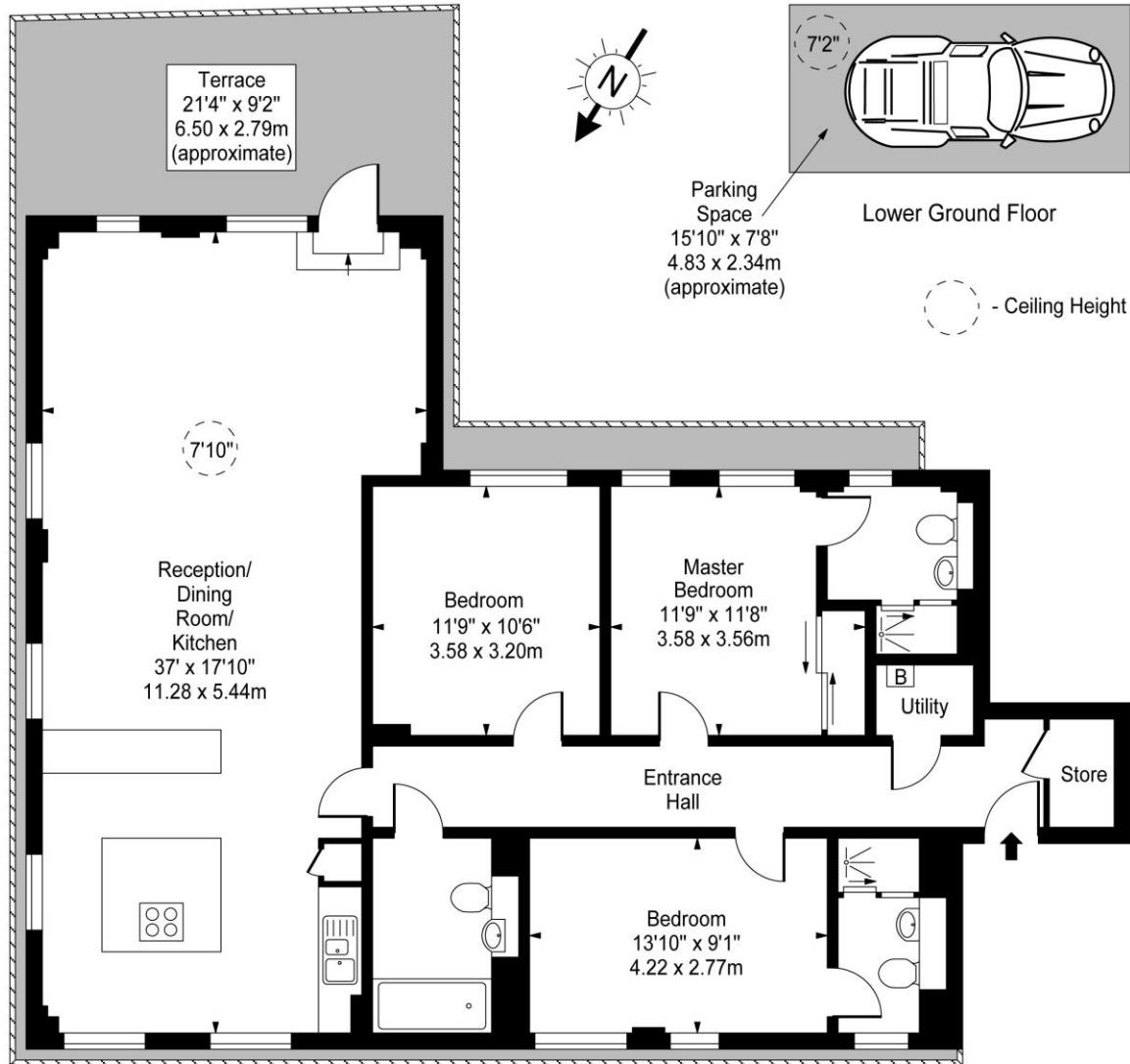
Tenure: Leasehold 236 years 8 months
Service Charge: £3,369.95 per annum
Ground Rent: £460 per annum
Local Authority: Hounslow Council
Council Tax Band: F

Energy Efficiency Rating		
	Current	Potential
Very energy efficient - lower running costs		
(94-100) A		
(81-93) B	85	85
(69-80) C		
(55-68) D		
(39-54) E		
(21-38) F		
(1-20) G		
Not energy efficient - higher running costs		
England, Scotland & Wales EU Directive 2002/91/EC		

Chestertons Kew Sales

1 Royal Parade
 Kew
 Richmond
 TW9 3QD
 kew@chestertons.co.uk
 020 8104 0340
 chestertons.co.uk

Lighterage Court, High Street, TW8



Fifth Floor

Approx Gross Internal Area 1308 Sq Ft - 121.51 Sq M

For Illustration Purposes Only - Not To Scale

www.goldlens.co.uk

Ref. No. 009069M

