



ERNLE ROAD

Wimbledon, SW20



ERNLE ROAD

Five bedroom, four bathroom detached character house for sale in
Wimbledon Village with views over Cannizaro Park.


5


3


5

EPC

D



Local Authority: London Borough of Merton
Council Tax band: H
Tenure: Freehold

Guide Price: £3,850,000

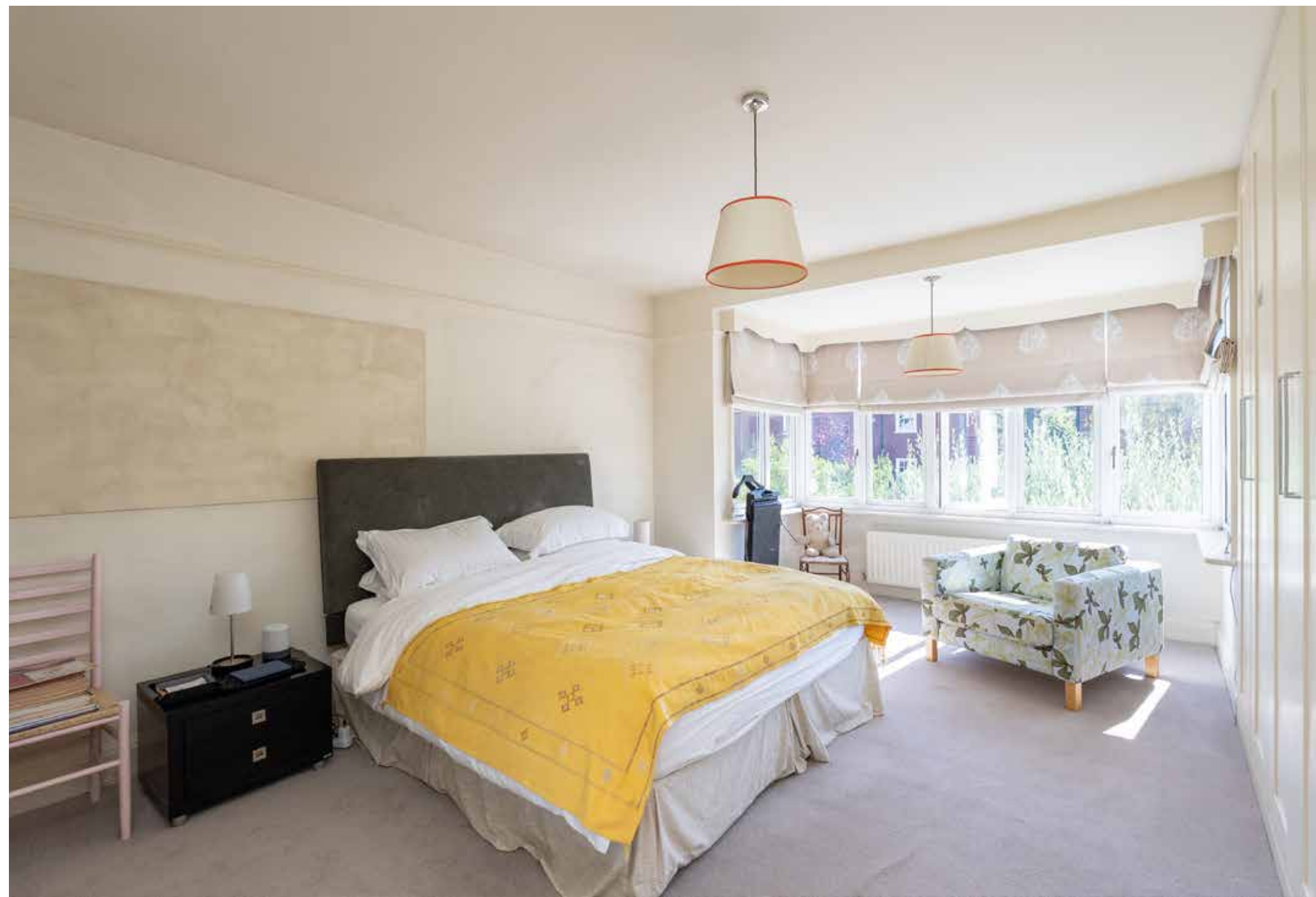


ABOUT THE PROPERTY

Positioned moments from Wimbledon Common and with views onto Cannizaro Park, this beautifully appointed five bedroom, four bathroom detached period home combines character, craftsmanship and modern specification to create an outstanding family residence.

The ground floor offers a wonderful flow of space, with a striking kitchen linked to a generous rear aspect reception opening on to a lovely balcony. Two additional receptions to the front add versatility and there is a separate utility room and an integral garage / storage area to add further practicality.







Spread across the upper floors are five well proportioned, bright and airy bedrooms, including an impressive principal suite looking out to Cannizaro Park with a sleek en-suite leading through to an ample fitted dressing room. There is a guest suite on the first floor, an additional suite spanning the entire top floor and a family bathroom on the first floor.

A spacious reception room on the garden level connects seamlessly with the private rear garden and adjoins a conservatory designed to maximise natural light.

Outside, the north-west facing garden is a delight, with paved dining terraces and a well-kept lawn. Additional garden storage is cleverly built beneath the house, while there is ample off-street parking to the front.





Approximate Gross Internal Area = 388.4 sq m / 4181 sq ft / Reduced Headroom = 5.3 sq m / 57 sq ft
Garage = 7.2 sq m / 77 sq ft
Total = 400.9 sq m / 4315 sq ft

This plan is for layout guidance only. Not drawn to scale unless stated. Windows and door openings are approximate. Whilst every care is taken in the preparation of this plan, please check all dimensions, shapes and compass bearings before making any decisions reliant upon them. (ID767266)

Christopher Burton FNAEA
+44 20 3815 9417
chris.burton@knightfrank.com

Knight Frank Wimbledon
58 High Street, London
SW19 5EE

[knightfrank.co.uk](https://www.knightfrank.co.uk)

Your partners in property

1. Particulars: These particulars are not an offer or contract, nor part of one. You should not rely on statements given by Knight Frank in the particulars, by word of mouth or in writing ("information") as being factually accurate about the property, its condition or its value. Neither Knight Frank nor any joint agent has any authority to make any representations about the property, and accordingly any information given is entirely without responsibility on the part of Knight Frank. 2. Material Information: Please note that the material information is provided to Knight Frank by third parties and is provided here as a guide only. While Knight Frank has taken steps to verify this information, we advise you to confirm the details of any such material information prior to any offer being submitted. If we are informed of changes to this information by the seller or another third party, we will use reasonable endeavours to update this as soon as practical. 3. Photos, Videos etc: The photographs, property videos and virtual viewings etc. show only certain parts of the property as they appeared at the time they were taken. Areas, measurements and distances given are approximate only. 4. Regulations etc: Any reference to alterations to, or use of, any part of the property does not mean that any necessary planning, building regulations or other consent has been obtained. A buyer must find out by inspection or in other ways that these matters have been properly dealt with and that all information is correct. 5. Fixtures and fittings: A list of the fitted carpets, curtains, light fittings and other items fixed to the property which are included in the sale (or may be available by separate negotiation) will be provided by the Seller's Solicitors. 6. VAT: The VAT position relating to the property may change without notice. 7. To find out how we process Personal Data, please refer to our Group Privacy Statement and other notices at <https://www.knightfrank.com/legals/privacy-statement>.
Particulars dated September 2025. Photographs and videos dated September 2025. All information is correct at the time of going to print. Knight Frank is the trading name of Knight Frank LLP. Knight Frank LLP is a limited liability partnership registered in England and Wales with registered number OC305934. Our registered office is at 55 Baker Street, London W1U 8AN. We use the term 'partner' to refer to a member of Knight Frank LLP, or an employee or consultant. A list of members names of Knight Frank LLP may be inspected at our registered office. If you do not want us to contact you further about our services then please contact us by either calling 020 3544 0692, email to marketing.help@knightfrank.com or post to our UK Residential Marketing Manager at our registered office (above) providing your name and address.

